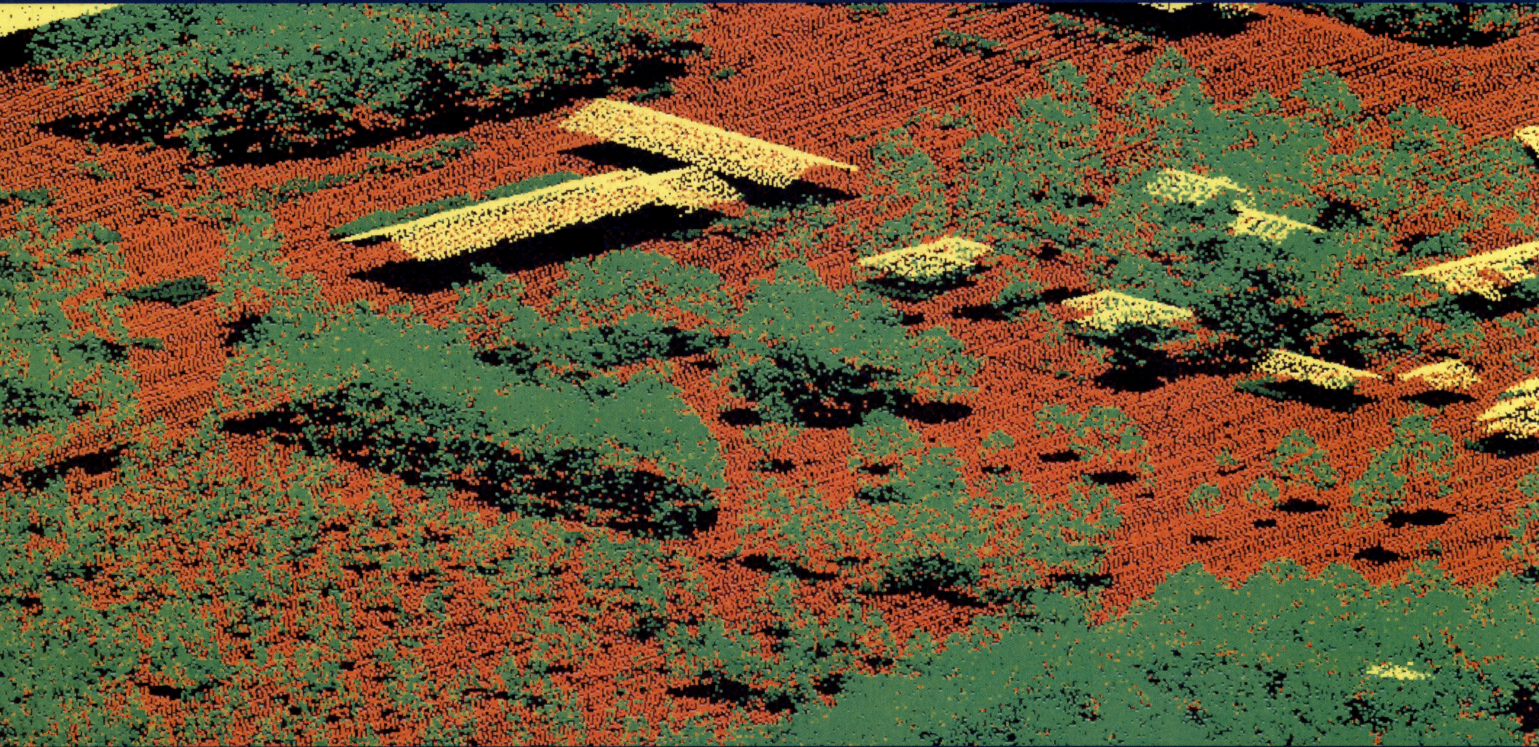


# LIDAR GROUND CONTROL REPORT



## NSSDA Ground Truth Survey Results: 2015 Wood County LiDAR Project

Geospatial services provided by Ayres Associates

Report date: September 3, 2015

**AYRES**  
ASSOCIATES



## Abstract

---

This report documents the GPS ground surveys conducted in support of FEMA accuracy testing of the lidar data collection for Wood County in 2015. Surveys were conducted at various sites utilizing the base stations established in the static network. These surveys established "ground truth" data at each site on different surface types, including low grass, high grass, low trees, high trees and urban areas. Statistical comparisons were made between ground truth points collected from the ground survey and the elevation at the associated horizontal coordinates represented on the lidar-derived digital terrain model.

## Data Analysis

---

To qualify as an acceptable accuracy test, the lidar data must be compared with a dataset of higher accuracy – in this instance, ground survey. To develop a comparable dataset of points from the lidar dataset, a utility from proprietary software was used.

The ground control survey results were imported into an ESRI PointZ shapefile with each point's information as attributes. The utility then accessed the lidar and generated a triangulated irregular network (TIN), which is a continuous digital terrain surface, using the bare-earth lidar points and the compiled breaklines. The utility probed the TIN surface to determine its elevations at each of the survey point's horizontal locations.

The elevation was then appended as a field to the PointZ shapefile; the attributes for each point were exported to a database and then statistical analysis was performed. The results can be seen on the following pages.

## Overall Accuracy

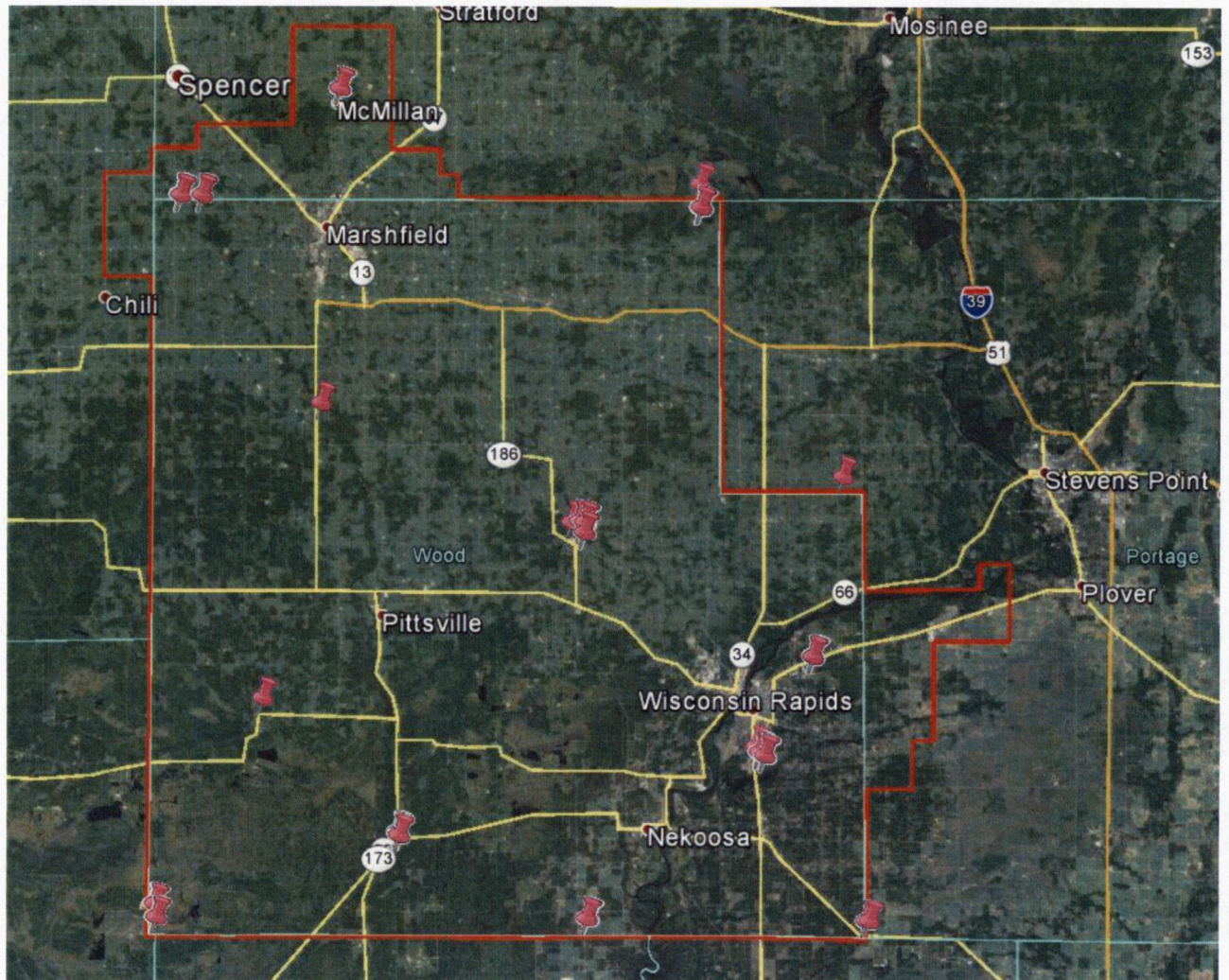
---

A comparison of the ground survey versus lidar model values indicates a vertical root mean square error (RMSE<sub>z</sub>) of 0.399 feet. This is within the FEMA specified vertical accuracy tolerance of 0.61 feet. This RMSE<sub>z</sub> equates to a tested 0.781 feet vertical accuracy at 95% confidence level.



## Ground Truth Survey Locations

The ground survey test points were distributed and categorized into sites as shown in the map below:





## Ground Truth Analysis Reference Information

---

*Coordinate System* – Wisconsin Coordinate Reference System (WISCRS) – Wood County

*Horizontal Datum* – NAD83 (11)

*Vertical Datum* – NAVD88 (Geoid 12A), survey feet

### Field Definitions

---

*Number* – The designation given to the ground survey point to identify it with its coordinates and land cover type.

*Easting, Northing and KnownZ* – The coordinates that describe the point’s horizontal and vertical location within the Trempealeau County WISCRS Coordinate System. The Easting and Northing values are shared between the ground control points and lidar comparison points. The KnownZ field shows the elevation of the survey number. The lidar comparison point’s elevation is implicit in the analysis’ Delta Z.

*Delta Z* – The error, the difference between the elevation at a horizontal location as determined by ground survey and as determined by the lidar dataset.

*Laser Z* – The elevation at a horizontal location as determined by the lidar dataset.

*Landcover Types* – The predominant land cover category at the location of the survey point.

<b><i>Land Cover Type</i></b>	<b><i>Description</i></b>
Low Grass	Lawns, golf courses, plowed fields
Tall Grass	High grass, weeds, crop fields
Low Trees	Brush, shrubs
Tall Trees	Fully forested (hardwood, evergreens, mixed forests)
Urban	Asphalt, concrete



## Statistical Definitions

---

*RMSEz* – The root mean squared error, the square root of the average of the squared errors.

*Average Delta Z* – The average of the Delta Z squared values.

*Minimum Delta Z* – The minimum of the Delta Z squared values.

*Maximum Delta Z* – The maximum of the Delta Z squared values.

*Accuracy Z* – The product of multiplying the RMSEz with 1.96.

## Statistical Results

---

<b>Summary of Results – Overall</b>	
Number of Points	1397
RMSEz	0.399 US Survey Feet
Average Delta Z	-0.142 US Survey Feet
Minimum Delta Z	-10.511 US Survey Feet
Maximum Delta Z	2.139 US Survey Feet
Accuracy Z	0.781 US Survey Feet

<b>Summary of Results – Urban</b>	
Number of Points	248
RMSEz	0.110 US Survey Feet
Average Delta Z	0.033 US Survey Feet
Minimum Delta Z	-0.279 US Survey Feet
Maximum Delta Z	0.275 US Survey Feet
Accuracy Z	0.216 US Survey Feet

<b>Summary of Results – Low Grass</b>	
Number of Points	344
RMSEz	0.139 US Survey Feet
Average Delta Z	-0.067 US Survey Feet
Minimum Delta Z	-0.395 US Survey Feet
Maximum Delta Z	0.300 US Survey Feet
Accuracy Z	0.272 US Survey Feet



<b>Summary of Results – Tall Grass</b>	
Number of Points	247
RMSEz	0.319 US Survey Feet
Average Delta Z	-0.226 US Survey Feet
Minimum Delta Z	-0.836 US Survey Feet
Maximum Delta Z	0.347 US Survey Feet
Accuracy Z	0.624 US Survey Feet

<b>Summary of Results – Low Trees</b>	
Number of Points	284
RMSEz	0.322 US Survey Feet
Average Delta Z	-0.264 US Survey Feet
Minimum Delta Z	-1.004 US Survey Feet
Maximum Delta Z	0.367 US Survey Feet
Accuracy Z	0.631 US Survey Feet

<b>Summary of Results – Tall Trees</b>	
Number of Points	274
RMSEz	0.397 US Survey Feet
Average Delta Z	-0.147 US Survey Feet
Minimum Delta Z	-1.586 US Survey Feet
Maximum Delta Z	2.139 US Survey Feet
Accuracy Z	0.778 US Survey Feet

<b>Number</b>	<b>Easting</b>	<b>Northing</b>	<b>Known Z</b>	<b>Laser Z</b>	<b>Delta Z</b>	<b>Landcover Type</b>
1000	732134.89	436428.07	1016.020	1015.783	0.237	Urban
1001	732135.15	436430.80	1015.855	1015.686	0.169	Urban
1002	732135.46	436433.35	1015.745	1015.546	0.198	Urban
1003	732135.58	436436.44	1015.594	1015.403	0.190	Urban
1004	732136.14	436441.82	1015.455	1015.256	0.198	Urban
1005	732136.48	436446.44	1015.395	1015.197	0.198	Urban
1006	732136.99	436450.54	1015.309	1015.101	0.207	Urban
1007	732137.43	436454.76	1015.240	1015.074	0.166	Urban
1008	732132.08	436454.97	1015.253	1015.052	0.201	Urban
1009	732127.55	436455.40	1015.200	1014.989	0.211	Urban
1010	732122.62	436455.53	1015.215	1015.034	0.181	Urban
1011	732118.33	436455.63	1015.181	1015.022	0.158	Urban
1012	732114.12	436455.95	1015.210	1015.018	0.192	Urban
1013	732114.46	436450.70	1015.343	1015.154	0.189	Urban
1014	732119.17	436450.74	1015.272	1015.145	0.127	Urban
1015	732124.03	436450.50	1015.336	1015.165	0.170	Urban



<i>Number</i>	<i>Easting</i>	<i>Northing</i>	<i>Known Z</i>	<i>Laser Z</i>	<i>Delta Z</i>	<i>Landcover Type</i>
1016	732129.22	436450.45	1015.295	1015.084	0.210	Urban
1017	732129.03	436444.31	1015.449	1015.255	0.193	Urban
1018	732123.03	436444.84	1015.490	1015.276	0.214	Urban
1019	732118.26	436444.73	1015.496	1015.281	0.215	Urban
1020	732113.40	436445.14	1015.488	1015.322	0.165	Urban
1021	732109.66	436445.04	1015.499	1015.312	0.186	Urban
1022	732110.44	436439.83	1015.599	1015.451	0.149	Urban
1023	732115.43	436439.38	1015.633	1015.413	0.220	Urban
1024	732120.73	436439.05	1015.609	1015.462	0.147	Urban
1025	732126.10	436438.70	1015.629	1015.460	0.169	Urban
1026	732131.16	436438.33	1015.608	1015.405	0.203	Urban
1027	732130.41	436433.44	1015.833	1015.678	0.155	Urban
1028	732125.40	436433.46	1015.801	1015.711	0.089	Urban
1029	732120.65	436433.50	1015.833	1015.705	0.128	Urban
1030	732115.55	436433.68	1015.844	1015.730	0.114	Urban
1031	732111.31	436433.67	1015.882	1015.690	0.193	Urban
1032	732111.64	436428.09	1016.050	1015.835	0.215	Urban
1033	732117.63	436428.81	1016.083	1015.866	0.217	Urban
1034	732122.78	436429.06	1016.108	1015.847	0.261	Urban
1035	732127.92	436428.78	1016.069	1015.829	0.240	Urban
1036	732135.78	436405.29	1015.642	1015.475	0.168	Tall Grass
1037	732141.03	436405.83	1015.653	1015.485	0.169	Tall Grass
1038	732146.13	436405.71	1015.436	1015.307	0.129	Tall Grass
1039	732151.03	436406.01	1015.389	1015.320	0.069	Tall Grass
1040	732156.10	436405.87	1015.289	1015.200	0.089	Tall Grass
1041	732160.87	436405.64	1015.437	1015.292	0.145	Tall Grass
1042	732160.33	436399.46	1015.334	1015.271	0.063	Tall Grass
1043	732154.29	436400.01	1015.364	1015.328	0.036	Tall Grass
1044	732149.22	436400.21	1015.447	1015.320	0.126	Tall Grass
1045	732144.10	436400.89	1015.696	1015.420	0.275	Tall Grass
1046	732138.41	436401.91	1015.486	1015.390	0.096	Tall Grass
1047	732134.07	436402.56	1015.604	1015.440	0.164	Tall Grass
1048	732134.21	436396.66	1015.431	1015.350	0.081	Tall Grass
1049	732140.41	436397.61	1015.484	1015.399	0.085	Tall Grass
1050	732145.23	436398.01	1015.536	1015.377	0.159	Tall Grass
1051	732150.17	436398.58	1015.431	1015.271	0.160	Tall Grass
1052	732155.40	436397.53	1015.425	1015.341	0.084	Tall Grass
1053	732160.44	436397.02	1015.354	1015.264	0.089	Tall Grass
1054	732160.14	436390.40	1015.360	1015.199	0.161	Tall Grass
1055	732154.69	436390.60	1015.492	1015.234	0.259	Tall Grass
1056	732149.28	436390.57	1015.321	1015.202	0.119	Tall Grass
1057	732144.03	436390.83	1015.701	1015.354	0.347	Tall Grass
1058	732138.26	436390.91	1015.448	1015.369	0.080	Tall Grass



<i>Number</i>	<i>Easting</i>	<i>Northing</i>	<i>Known Z</i>	<i>Laser Z</i>	<i>Delta Z</i>	<i>Landcover Type</i>
1059	732132.71	436390.88	1015.483	1015.326	0.158	Tall Grass
1060	732133.51	436384.20	1015.501	1015.312	0.188	Tall Grass
1061	732138.81	436383.99	1015.390	1015.202	0.187	Tall Grass
1062	732145.38	436384.30	1015.278	1015.088	0.190	Tall Grass
1063	732150.59	436384.28	1015.113	1015.023	0.090	Tall Grass
1064	732155.54	436384.32	1015.180	1015.058	0.122	Tall Grass
1065	732160.76	436384.60	1015.153	1015.051	0.102	Tall Grass
1066	732160.62	436377.92	1015.002	1014.926	0.076	Tall Grass
1067	732154.46	436378.18	1015.089	1014.970	0.118	Tall Grass
1068	732149.54	436378.54	1015.158	1015.085	0.073	Tall Grass
1069	732144.53	436379.09	1015.277	1015.080	0.197	Tall Grass
1070	732139.80	436379.34	1015.391	1015.200	0.191	Tall Grass
1071	732134.37	436379.55	1015.435	1015.317	0.118	Tall Grass
1072	732025.58	436294.65	1014.938	1014.866	0.072	Low Grass
1073	732020.41	436294.47	1014.867	1014.785	0.082	Low Grass
1074	732015.13	436294.57	1014.883	1014.779	0.104	Low Grass
1075	732010.49	436293.86	1014.891	1014.905	-0.014	Low Grass
1076	732005.50	436293.40	1015.033	1015.001	0.032	Low Grass
1077	732000.50	436293.12	1014.749	1014.747	0.002	Low Grass
1078	732000.84	436299.20	1014.851	1014.824	0.027	Low Grass
1079	732006.04	436298.95	1015.034	1014.969	0.065	Low Grass
1080	732010.97	436299.09	1014.911	1014.923	-0.012	Low Grass
1081	732015.45	436299.04	1014.899	1014.840	0.059	Low Grass
1082	732020.76	436299.45	1014.858	1014.815	0.043	Low Grass
1083	732024.72	436299.54	1015.096	1014.920	0.177	Low Grass
1084	732024.16	436305.78	1014.932	1014.825	0.107	Low Grass
1085	732018.89	436305.73	1014.889	1014.732	0.157	Low Grass
1086	732014.50	436305.74	1014.839	1014.729	0.111	Low Grass
1087	732009.10	436305.29	1014.966	1014.882	0.084	Low Grass
1088	732004.14	436304.92	1014.980	1014.956	0.025	Low Grass
1089	731999.62	436304.89	1014.684	1014.724	-0.041	Low Grass
1090	731999.90	436311.23	1014.794	1014.789	0.005	Low Grass
1091	732004.88	436311.02	1015.077	1015.020	0.057	Low Grass
1092	732010.46	436311.70	1014.958	1014.867	0.090	Low Grass
1093	732015.79	436311.76	1014.852	1014.804	0.048	Low Grass
1094	732020.58	436311.99	1014.914	1014.770	0.144	Low Grass
1095	732025.04	436312.67	1015.218	1014.918	0.300	Low Grass
1096	732024.46	436318.84	1015.125	1014.999	0.126	Low Grass
1097	732019.25	436318.70	1014.974	1014.858	0.116	Low Grass
1098	732014.03	436318.50	1015.021	1014.789	0.233	Low Grass
1099	732008.71	436318.37	1015.027	1014.928	0.098	Low Grass
1100	732003.27	436318.04	1015.089	1015.029	0.059	Low Grass
1101	731998.40	436318.12	1014.707	1014.609	0.098	Low Grass
1102	731998.29	436324.32	1014.694	1014.688	0.006	Low Grass



<i>Number</i>	<i>Easting</i>	<i>Northing</i>	<i>Known Z</i>	<i>Laser Z</i>	<i>Delta Z</i>	<i>Landcover Type</i>
1103	732003.23	436325.09	1015.107	1015.006	0.101	Low Grass
1104	732008.00	436325.34	1015.054	1014.919	0.134	Low Grass
1105	732013.00	436325.41	1014.968	1014.810	0.159	Low Grass
1106	732018.27	436325.39	1014.925	1014.803	0.122	Low Grass
1107	732024.12	436325.39	1015.128	1014.894	0.234	Low Grass
1108	733211.74	435719.79	1008.988	1009.065	-0.077	Low Trees
1109	733213.74	435724.83	1009.109	1009.373	-0.264	Low Trees
1110	733215.11	435730.44	1009.296	1009.399	-0.104	Low Trees
1111	733217.38	435735.85	1009.397	1009.511	-0.113	Low Trees
1112	733219.57	435741.75	1009.866	1009.956	-0.090	Low Trees
1113	733221.81	435748.51	1009.724	1009.793	-0.070	Low Trees
1114	733228.06	435747.85	1009.579	1009.815	-0.236	Low Trees
1115	733225.43	435742.81	1009.416	1009.746	-0.330	Low Trees
1116	733224.11	435737.63	1009.525	1009.642	-0.118	Low Trees
1117	733221.32	435731.85	1009.223	1009.457	-0.235	Low Trees
1118	733220.29	435724.80	1009.105	1009.312	-0.207	Low Trees
1119	733218.50	435719.14	1008.891	1009.044	-0.153	Low Trees
1120	733225.30	435716.70	1008.824	1009.184	-0.360	Low Trees
1121	733228.68	435720.75	1009.087	1009.367	-0.280	Low Trees
1122	733233.41	435715.12	1008.971	1009.038	-0.067	Low Trees
1123	733236.17	435721.77	1009.275	1009.653	-0.378	Low Trees
1124	733229.68	435724.88	1009.316	1009.507	-0.191	Low Trees
1125	733229.46	435730.56	1009.404	1009.692	-0.288	Low Trees
1126	733231.38	435736.46	1009.445	1009.797	-0.352	Low Trees
1127	733237.57	435736.04	1009.662	1009.945	-0.282	Low Trees
1128	733236.34	435728.92	1009.589	1009.696	-0.107	Low Trees
1129	733235.50	435743.81	1009.786	1009.915	-0.129	Low Trees
1130	733236.67	435749.06	1009.681	1009.683	-0.002	Low Trees
1131	733228.82	435749.23	1009.718	1009.809	-0.091	Low Trees
1132	733243.42	435744.59	1009.707	1009.894	-0.188	Low Trees
1133	733249.36	435743.46	1010.002	1009.945	0.057	Low Trees
1134	733247.59	435736.93	1009.798	1010.057	-0.259	Low Trees
1135	733242.16	435738.57	1009.881	1010.143	-0.263	Low Trees
1136	733246.46	435730.21	1009.633	1009.758	-0.126	Low Trees
1137	733240.95	435731.77	1009.617	1009.861	-0.244	Low Trees
1138	733240.77	435726.25	1009.908	1009.741	0.167	Low Trees
1139	733245.70	435723.59	1009.555	1009.738	-0.182	Low Trees
1140	733244.90	435716.87	1009.288	1009.335	-0.047	Low Trees
1141	733239.38	435716.91	1009.026	1009.321	-0.295	Low Trees
1142	733237.45	435713.32	1009.102	1009.061	0.041	Low Trees
1143	733243.89	435712.17	1009.521	1009.154	0.367	Low Trees
1144	733249.72	435710.26	1009.224	1009.223	0.002	Low Trees
1145	733252.14	435715.81	1009.462	1009.515	-0.053	Low Trees



<i>Number</i>	<i>Easting</i>	<i>Northing</i>	<i>Known Z</i>	<i>Laser Z</i>	<i>Delta Z</i>	<i>Landcover Type</i>
1146	733255.56	435721.94	1009.745	1009.736	0.009	Low Trees
1147	733256.71	435728.40	1009.818	1009.880	-0.062	Low Trees
1148	733254.44	435735.27	1009.764	1009.983	-0.219	Low Trees
1149	733256.21	435743.28	1009.723	1009.980	-0.257	Low Trees
1150	733276.08	435750.59	1009.685	1009.690	-0.004	Tall Trees
1151	733281.43	435750.22	1010.014	1009.873	0.141	Tall Trees
1152	733281.61	435756.71	1009.752	1009.953	-0.201	Tall Trees
1153	733276.95	435758.92	1009.742	1009.810	-0.067	Tall Trees
1154	733279.31	435763.88	1009.789	1009.724	0.065	Tall Trees
1155	733285.27	435762.24	1009.922	1009.845	0.077	Tall Trees
1156	733286.28	435767.98	1009.766	1009.801	-0.035	Tall Trees
1157	733280.27	435770.15	1009.841	1009.818	0.023	Tall Trees
1158	733282.60	435775.49	1009.714	1009.746	-0.032	Tall Trees
1159	733288.38	435773.95	1009.518	1009.643	-0.125	Tall Trees
1160	733288.93	435780.32	1009.650	1009.775	-0.125	Tall Trees
1161	733283.66	435781.53	1009.524	1009.737	-0.213	Tall Trees
1162	733297.68	435776.95	1009.483	1009.670	-0.188	Tall Trees
1163	733304.70	435777.34	1009.679	1009.656	0.024	Tall Trees
1164	733304.18	435770.75	1009.782	1009.702	0.080	Tall Trees
1165	733298.78	435769.16	1009.632	1009.832	-0.201	Tall Trees
1166	733297.98	435763.01	1009.679	1009.842	-0.163	Tall Trees
1167	733302.91	435761.63	1009.730	1009.849	-0.119	Tall Trees
1168	733299.80	435756.82	1009.808	1009.809	-0.001	Tall Trees
1169	733294.75	435756.85	1009.954	1010.110	-0.157	Tall Trees
1170	733295.77	435750.74	1009.987	1009.966	0.021	Tall Trees
1171	733259.00	435755.69	1009.636	1009.823	-0.187	Tall Trees
1172	733258.85	435762.77	1009.761	1009.793	-0.032	Tall Trees
1173	733259.44	435768.66	1009.475	1009.795	-0.320	Tall Trees
1174	733260.82	435773.55	1009.706	1009.674	0.032	Tall Trees
1175	733261.62	435779.60	1009.627	1009.599	0.028	Tall Trees
1176	733262.09	435785.29	1009.474	1009.742	-0.268	Tall Trees
1177	733269.54	435785.13	1009.532	1009.716	-0.183	Tall Trees
1178	733268.85	435777.95	1009.488	1009.663	-0.176	Tall Trees
1179	733270.19	435770.83	1009.594	1009.717	-0.123	Tall Trees
1180	733270.31	435764.28	1009.653	1009.834	-0.181	Tall Trees
1181	733270.12	435758.53	1009.846	1009.925	-0.079	Tall Trees
1182	733270.81	435752.83	1009.835	1009.830	0.005	Tall Trees
1183	755339.53	399762.91	1031.872	1031.848	0.024	Urban
1184	755343.92	399762.41	1031.893	1031.959	-0.065	Urban
1185	755348.61	399762.01	1031.975	1031.973	0.002	Urban
1186	755353.39	399761.62	1031.943	1031.964	-0.021	Urban
1187	755358.41	399761.03	1031.901	1031.938	-0.037	Urban
1188	755362.66	399760.88	1031.793	1031.791	0.002	Urban
1189	755362.64	399767.45	1031.946	1031.815	0.130	Urban



<i>Number</i>	<i>Easting</i>	<i>Northing</i>	<i>Known Z</i>	<i>Laser Z</i>	<i>Delta Z</i>	<i>Landcover Type</i>
1190	755357.58	399767.89	1032.024	1032.014	0.010	Urban
1191	755352.81	399768.48	1032.051	1032.087	-0.036	Urban
1192	755347.83	399768.63	1031.999	1031.957	0.043	Urban
1193	755342.61	399769.04	1031.969	1031.993	-0.024	Urban
1194	755342.41	399776.49	1032.033	1031.978	0.055	Urban
1195	755348.27	399776.60	1032.056	1032.047	0.009	Urban
1196	755353.43	399775.95	1032.109	1032.103	0.007	Urban
1197	755358.71	399775.73	1032.074	1032.034	0.041	Urban
1198	755363.67	399775.38	1031.946	1031.910	0.037	Urban
1199	755364.01	399781.92	1032.024	1031.944	0.080	Urban
1200	755358.47	399782.45	1032.118	1032.113	0.004	Urban
1201	755353.23	399783.11	1032.187	1032.179	0.009	Urban
1202	755348.36	399783.49	1032.086	1032.094	-0.008	Urban
1203	755343.06	399783.80	1031.960	1032.032	-0.072	Urban
1204	755342.72	399791.05	1032.031	1032.007	0.024	Urban
1205	755347.79	399790.55	1032.117	1032.185	-0.067	Urban
1206	755352.99	399790.06	1032.157	1032.138	0.019	Urban
1207	755358.24	399790.08	1032.155	1032.163	-0.007	Urban
1208	755363.39	399789.65	1032.122	1032.025	0.097	Urban
1209	755365.82	399789.68	1031.948	1031.938	0.010	Urban
1210	755390.58	399763.85	1030.050	1030.059	-0.010	Low Grass
1211	755395.02	399763.88	1030.136	1030.090	0.045	Low Grass
1212	755399.16	399763.63	1030.035	1030.169	-0.133	Low Grass
1213	755402.84	399763.92	1030.206	1030.195	0.010	Low Grass
1214	755406.83	399763.68	1030.266	1030.271	-0.005	Low Grass
1215	755410.63	399763.35	1030.216	1030.235	-0.019	Low Grass
1216	755411.32	399767.10	1030.275	1030.257	0.018	Low Grass
1217	755406.27	399767.72	1030.216	1030.200	0.016	Low Grass
1218	755403.13	399767.27	1030.193	1030.159	0.034	Low Grass
1219	755399.55	399766.81	1030.053	1030.080	-0.027	Low Grass
1220	755396.13	399766.37	1030.091	1030.032	0.059	Low Grass
1221	755391.21	399766.51	1030.018	1030.026	-0.008	Low Grass
1222	755390.05	399770.95	1029.887	1029.859	0.027	Low Grass
1223	755393.51	399771.33	1030.124	1030.053	0.072	Low Grass
1224	755396.61	399771.40	1030.138	1030.109	0.029	Low Grass
1225	755399.95	399771.71	1030.168	1030.116	0.052	Low Grass
1226	755403.95	399772.04	1030.123	1030.167	-0.044	Low Grass
1227	755407.74	399772.16	1030.052	1030.170	-0.119	Low Grass
1228	755412.28	399772.95	1030.136	1030.220	-0.084	Low Grass
1229	755412.06	399778.36	1030.218	1030.220	-0.003	Low Grass
1230	755408.01	399778.94	1030.272	1030.259	0.013	Low Grass
1231	755404.14	399778.72	1030.184	1030.232	-0.048	Low Grass
1232	755399.47	399778.82	1030.306	1030.278	0.028	Low Grass



<b>Number</b>	<b>Easting</b>	<b>Northing</b>	<b>Known Z</b>	<b>Laser Z</b>	<b>Delta Z</b>	<b>Landcover Type</b>
1233	755395.37	399779.11	1030.104	1030.175	-0.071	Low Grass
1234	755391.36	399779.42	1029.786	1029.906	-0.119	Low Grass
1235	755391.77	399785.06	1029.826	1029.876	-0.050	Low Grass
1236	755396.66	399785.81	1030.263	1030.257	0.006	Low Grass
1237	755401.13	399785.55	1030.431	1030.419	0.012	Low Grass
1238	755405.02	399785.25	1030.377	1030.353	0.024	Low Grass
1239	755409.16	399785.39	1030.347	1030.404	-0.057	Low Grass
1240	755413.23	399785.33	1030.432	1030.433	-0.001	Low Grass
1241	755413.25	399790.12	1030.456	1030.487	-0.030	Low Grass
1242	755408.36	399790.37	1030.421	1030.509	-0.088	Low Grass
1243	755404.44	399790.21	1030.409	1030.425	-0.016	Low Grass
1244	755399.74	399790.55	1030.303	1030.335	-0.032	Low Grass
1245	755395.63	399790.86	1030.024	1030.137	-0.113	Low Grass
1246	755392.43	399791.54	1029.743	1029.836	-0.093	Low Grass
1247	755435.20	399805.16	1031.113	1031.230	-0.117	Tall Grass
1248	755438.39	399805.06	1031.214	1031.315	-0.101	Tall Grass
1249	755441.89	399805.42	1031.301	1031.374	-0.073	Tall Grass
1250	755445.95	399805.49	1031.384	1031.495	-0.110	Tall Grass
1251	755449.97	399805.73	1031.343	1031.492	-0.149	Tall Grass
1252	755453.58	399806.22	1031.490	1031.571	-0.080	Tall Grass
1253	755453.65	399810.83	1031.449	1031.684	-0.235	Tall Grass
1254	755449.08	399809.85	1031.347	1031.683	-0.336	Tall Grass
1255	755445.29	399809.44	1031.310	1031.576	-0.266	Tall Grass
1256	755440.79	399808.55	1031.236	1031.443	-0.207	Tall Grass
1257	755436.83	399808.01	1031.070	1031.416	-0.345	Tall Grass
1258	755435.48	399813.54	1031.125	1031.326	-0.201	Tall Grass
1259	755439.40	399813.69	1031.284	1031.476	-0.192	Tall Grass
1260	755443.68	399813.73	1031.345	1031.574	-0.230	Tall Grass
1261	755448.14	399814.03	1031.495	1031.678	-0.183	Tall Grass
1262	755452.33	399813.78	1031.506	1031.717	-0.211	Tall Grass
1263	755457.15	399819.05	1031.809	1031.925	-0.116	Tall Grass
1264	755452.81	399818.43	1031.674	1031.869	-0.195	Tall Grass
1265	755448.89	399819.17	1031.529	1031.776	-0.247	Tall Grass
1266	755444.96	399819.10	1031.472	1031.650	-0.178	Tall Grass
1267	755440.97	399819.06	1031.363	1031.571	-0.208	Tall Grass
1268	755436.61	399819.50	1031.332	1031.477	-0.145	Tall Grass
1269	755436.75	399825.09	1031.413	1031.582	-0.169	Tall Grass
1270	755441.36	399825.09	1031.561	1031.722	-0.161	Tall Grass
1271	755446.49	399825.08	1031.707	1031.827	-0.120	Tall Grass
1272	755451.66	399824.91	1031.713	1031.941	-0.228	Tall Grass
1273	755455.99	399824.91	1031.895	1032.023	-0.128	Tall Grass
1274	755403.35	399692.53	1030.249	1030.651	-0.402	Low Trees
1275	755402.96	399688.69	1030.263	1030.720	-0.457	Low Trees
1276	755402.66	399684.99	1030.239	1030.743	-0.504	Low Trees



<i>Number</i>	<i>Easting</i>	<i>Northing</i>	<i>Known Z</i>	<i>Laser Z</i>	<i>Delta Z</i>	<i>Landcover Type</i>
1277	755402.69	399681.60	1030.492	1030.674	-0.182	Low Trees
1278	755402.54	399677.51	1030.670	1030.810	-0.140	Low Trees
1279	755402.47	399673.75	1030.830	1031.003	-0.173	Low Trees
1280	755398.33	399674.32	1030.366	1030.949	-0.583	Low Trees
1281	755398.14	399678.94	1030.252	1030.615	-0.363	Low Trees
1282	755398.11	399683.28	1030.328	1030.697	-0.369	Low Trees
1283	755398.00	399688.14	1030.399	1030.690	-0.291	Low Trees
1284	755396.30	399693.22	1030.336	1030.718	-0.382	Low Trees
1285	755391.45	399691.04	1030.446	1030.771	-0.325	Low Trees
1286	755391.80	399687.53	1030.487	1030.765	-0.278	Low Trees
1287	755392.07	399682.16	1030.458	1030.846	-0.387	Low Trees
1288	755392.70	399677.28	1030.428	1030.833	-0.405	Low Trees
1289	755392.85	399673.07	1030.853	1031.217	-0.364	Low Trees
1290	755388.66	399672.13	1030.918	1031.148	-0.229	Low Trees
1291	755388.38	399677.21	1030.670	1030.949	-0.279	Low Trees
1292	755388.07	399682.40	1030.544	1030.842	-0.297	Low Trees
1293	755387.54	399687.38	1030.683	1030.786	-0.103	Low Trees
1294	755387.45	399692.32	1030.642	1030.799	-0.156	Low Trees
1295	755387.20	399697.10	1030.853	1030.860	-0.007	Low Trees
1296	755381.44	399695.29	1030.316	1030.536	-0.219	Low Trees
1297	755381.54	399690.07	1030.300	1030.610	-0.311	Low Trees
1298	755381.54	399685.23	1030.277	1030.691	-0.414	Low Trees
1299	755381.48	399680.21	1030.602	1030.811	-0.210	Low Trees
1300	755381.87	399675.44	1030.700	1030.926	-0.226	Low Trees
1301	755382.50	399670.16	1030.739	1031.062	-0.323	Low Trees
1302	755426.71	399686.20	1030.836	1031.009	-0.173	Tall Trees
1303	755429.36	399682.14	1030.866	1031.095	-0.229	Tall Trees
1304	755433.15	399678.45	1031.244	1031.349	-0.106	Tall Trees
1305	755437.38	399674.36	1031.393	1031.917	-0.523	Tall Trees
1306	755440.38	399672.02	1031.834	1032.017	-0.183	Tall Trees
1307	755443.35	399674.85	1031.448	1031.724	-0.277	Tall Trees
1308	755441.13	399678.65	1031.261	1031.543	-0.283	Tall Trees
1309	755438.45	399682.00	1031.035	1031.386	-0.351	Tall Trees
1310	755436.07	399684.34	1031.427	1031.268	0.159	Tall Trees
1311	755433.65	399687.42	1031.178	1031.048	0.130	Tall Trees
1312	755432.93	399693.16	1030.728	1031.091	-0.363	Tall Trees
1313	755438.40	399690.31	1030.819	1031.145	-0.326	Tall Trees
1314	755443.56	399687.35	1031.091	1031.229	-0.137	Tall Trees
1315	755447.94	399682.91	1031.241	1031.328	-0.087	Tall Trees
1316	755451.27	399678.72	1031.339	1031.610	-0.270	Tall Trees
1317	755424.91	399680.35	1030.916	1031.193	-0.277	Tall Trees
1318	755429.67	399676.75	1031.223	1031.697	-0.474	Tall Trees
1319	755432.78	399673.30	1031.422	1031.890	-0.468	Tall Trees



<i>Number</i>	<i>Easting</i>	<i>Northing</i>	<i>Known Z</i>	<i>Laser Z</i>	<i>Delta Z</i>	<i>Landcover Type</i>
1320	755439.92	399667.40	1031.914	1032.357	-0.444	Tall Trees
1321	755440.57	399661.53	1032.447	1032.608	-0.161	Tall Trees
1322	755434.02	399656.56	1032.422	1032.718	-0.297	Tall Trees
1323	755428.33	399661.51	1031.989	1032.300	-0.311	Tall Trees
1324	755425.19	399665.20	1031.781	1032.020	-0.239	Tall Trees
1325	755422.03	399669.45	1031.397	1031.801	-0.404	Tall Trees
1326	755418.52	399673.02	1031.129	1031.610	-0.481	Tall Trees
1327	719187.27	554012.80	1167.303	1167.500	-0.197	Low Grass
1328	719187.40	554016.42	1167.510	1167.622	-0.113	Low Grass
1329	719187.72	554019.29	1167.605	1167.757	-0.151	Low Grass
1330	719187.81	554022.49	1167.701	1167.817	-0.116	Low Grass
1331	719187.85	554025.35	1167.711	1167.913	-0.202	Low Grass
1332	719185.12	554024.93	1167.690	1167.802	-0.112	Low Grass
1333	719185.34	554022.29	1167.668	1167.737	-0.069	Low Grass
1334	719185.37	554019.40	1167.546	1167.702	-0.156	Low Grass
1335	719185.33	554016.65	1167.509	1167.578	-0.069	Low Grass
1336	719185.11	554013.13	1167.315	1167.434	-0.119	Low Grass
1337	719181.84	554014.21	1167.295	1167.374	-0.079	Low Grass
1338	719182.01	554017.81	1167.465	1167.547	-0.082	Low Grass
1339	719181.79	554021.26	1167.563	1167.680	-0.116	Low Grass
1340	719181.49	554024.71	1167.584	1167.684	-0.100	Low Grass
1341	719181.31	554027.79	1167.648	1167.706	-0.058	Low Grass
1342	719177.77	554027.47	1167.407	1167.609	-0.202	Low Grass
1343	719177.05	554023.60	1167.283	1167.451	-0.168	Low Grass
1344	719176.88	554019.87	1167.147	1167.400	-0.253	Low Grass
1345	719176.77	554015.89	1167.131	1167.342	-0.211	Low Grass
1346	719176.36	554012.12	1167.100	1167.220	-0.121	Low Grass
1347	719171.91	554013.00	1166.878	1167.049	-0.171	Low Grass
1348	719172.27	554017.03	1166.917	1167.139	-0.222	Low Grass
1349	719172.36	554020.85	1166.937	1167.151	-0.214	Low Grass
1350	719172.28	554024.72	1166.999	1167.228	-0.229	Low Grass
1351	719172.39	554028.95	1167.153	1167.338	-0.186	Low Grass
1352	719197.06	553971.42	1167.489	1167.580	-0.091	Low Grass
1353	719201.10	553971.41	1167.618	1167.719	-0.101	Low Grass
1354	719205.31	553971.37	1167.776	1167.785	-0.009	Low Grass
1355	719209.28	553971.34	1167.919	1167.913	0.007	Low Grass
1356	719213.72	553971.40	1168.017	1168.083	-0.066	Low Grass
1357	719213.68	553968.00	1168.215	1168.219	-0.005	Low Grass
1358	719209.65	553967.73	1168.167	1168.094	0.073	Low Grass
1359	719205.93	553967.71	1167.970	1167.959	0.011	Low Grass
1360	719202.27	553967.60	1167.880	1167.863	0.017	Low Grass
1361	719198.56	553967.53	1167.740	1167.737	0.004	Low Grass
1362	719198.57	553963.99	1167.760	1167.757	0.003	Low Grass
1363	719203.22	553963.85	1167.906	1167.893	0.012	Low Grass



<i>Number</i>	<i>Easting</i>	<i>Northing</i>	<i>Known Z</i>	<i>Laser Z</i>	<i>Delta Z</i>	<i>Landcover Type</i>
1364	719207.25	553963.86	1168.016	1168.005	0.011	Low Grass
1365	719212.20	553963.86	1168.146	1168.208	-0.063	Low Grass
1366	719212.19	553960.35	1168.119	1168.125	-0.006	Low Grass
1367	719207.81	553960.20	1168.012	1167.970	0.042	Low Grass
1368	719204.01	553960.19	1167.814	1167.809	0.006	Low Grass
1369	719199.43	553960.37	1167.664	1167.720	-0.056	Low Grass
1370	719195.55	553960.25	1167.554	1167.567	-0.013	Low Grass
1371	719195.58	553956.60	1167.427	1167.414	0.014	Low Grass
1372	719199.93	553956.78	1167.530	1167.547	-0.017	Low Grass
1373	719204.64	553956.83	1167.720	1167.676	0.045	Low Grass
1374	719209.18	553957.06	1167.884	1167.834	0.050	Low Grass
1375	719216.63	553956.91	1168.051	1168.068	-0.017	Low Grass
1376	719162.17	553926.02	1163.575	1163.958	-0.383	Tall Trees
1377	719162.21	553920.94	1163.267	1163.700	-0.433	Tall Trees
1378	719161.94	553915.07	1163.222	1163.589	-0.368	Tall Trees
1379	719161.61	553909.37	1163.164	1163.601	-0.437	Tall Trees
1380	719163.33	553903.07	1163.146	1163.605	-0.459	Tall Trees
1381	719158.69	553901.78	1162.791	1163.307	-0.516	Tall Trees
1382	719158.03	553908.60	1162.796	1163.404	-0.608	Tall Trees
1383	719158.12	553913.32	1163.224	1163.383	-0.159	Tall Trees
1384	719158.04	553918.91	1162.959	1163.458	-0.500	Tall Trees
1385	719158.19	553923.34	1163.899	1163.743	0.156	Tall Trees
1386	719157.08	553927.08	1163.496	1163.918	-0.423	Tall Trees
1387	719152.37	553927.01	1162.983	1163.591	-0.607	Tall Trees
1388	719150.52	553920.67	1163.140	1163.474	-0.334	Tall Trees
1389	719151.10	553916.43	1163.149	1163.320	-0.171	Tall Trees
1390	719154.05	553911.70	1162.929	1163.254	-0.325	Tall Trees
1391	719155.48	553903.20	1162.667	1163.054	-0.387	Tall Trees
1392	719150.53	553898.98	1162.434	1162.919	-0.485	Tall Trees
1393	719148.31	553902.55	1162.617	1162.957	-0.340	Tall Trees
1394	719146.88	553907.02	1163.164	1163.209	-0.045	Tall Trees
1395	719145.39	553912.12	1163.325	1163.486	-0.162	Tall Trees
1396	719144.78	553917.06	1163.474	1163.564	-0.090	Tall Trees
1397	719145.85	553921.81	1163.233	1163.511	-0.279	Tall Trees
1398	719144.81	553926.18	1163.325	1163.515	-0.191	Tall Trees
1399	719139.55	553924.65	1163.140	1163.464	-0.324	Tall Trees
1400	719140.07	553920.30	1163.295	1163.481	-0.186	Tall Trees
1401	719140.10	553916.51	1163.184	1163.291	-0.106	Tall Trees
1402	719141.31	553910.31	1162.998	1163.304	-0.307	Tall Trees
1403	719141.47	553904.80	1162.689	1163.010	-0.321	Tall Trees
1404	719141.02	553901.29	1162.492	1162.759	-0.267	Tall Trees
1405	719028.56	553938.80	1158.208	1158.243	-0.035	Low Trees
1406	719023.60	553940.22	1158.369	1158.486	-0.117	Low Trees



<i>Number</i>	<i>Easting</i>	<i>Northing</i>	<i>Known Z</i>	<i>Laser Z</i>	<i>Delta Z</i>	<i>Landcover Type</i>
1407	719019.59	553940.99	1157.880	1158.219	-0.339	Low Trees
1408	719013.83	553941.80	1157.428	1157.827	-0.400	Low Trees
1409	719008.50	553941.55	1157.465	1157.760	-0.295	Low Trees
1410	719008.37	553946.20	1157.325	1157.752	-0.427	Low Trees
1411	719012.93	553946.62	1157.624	1158.097	-0.473	Low Trees
1412	719017.23	553945.42	1158.038	1158.310	-0.272	Low Trees
1413	719022.54	553945.19	1158.290	1158.550	-0.261	Low Trees
1414	719026.91	553945.58	1158.629	1158.836	-0.207	Low Trees
1415	719026.70	553949.80	1158.594	1158.751	-0.158	Low Trees
1416	719022.16	553950.55	1158.321	1158.622	-0.301	Low Trees
1417	719018.01	553950.99	1158.316	1158.500	-0.184	Low Trees
1418	719013.90	553952.04	1157.998	1158.530	-0.532	Low Trees
1419	719009.50	553951.39	1157.706	1158.012	-0.306	Low Trees
1420	719005.37	553952.34	1157.473	1157.986	-0.513	Low Trees
1421	719004.99	553956.34	1157.687	1158.145	-0.458	Low Trees
1422	719009.36	553957.15	1157.911	1158.362	-0.451	Low Trees
1423	719012.11	553957.28	1158.214	1158.567	-0.353	Low Trees
1424	719017.82	553955.70	1158.511	1158.836	-0.324	Low Trees
1425	719023.23	553957.25	1158.560	1158.891	-0.332	Low Trees
1426	719027.86	553958.49	1158.704	1158.822	-0.119	Low Trees
1427	719028.17	553963.50	1158.573	1158.810	-0.237	Low Trees
1428	719023.45	553964.28	1158.579	1159.025	-0.446	Low Trees
1429	719019.35	553964.35	1158.889	1159.248	-0.359	Low Trees
1430	719015.05	553965.29	1158.617	1159.254	-0.637	Low Trees
1431	719010.74	553965.50	1158.084	1158.768	-0.684	Low Trees
1432	719007.74	553965.62	1157.891	1158.583	-0.693	Low Trees
1433	719313.27	554003.71	1169.748	1169.941	-0.193	Tall Grass
1434	719317.68	554003.43	1169.929	1170.020	-0.091	Tall Grass
1435	719321.96	554003.50	1170.039	1170.117	-0.078	Tall Grass
1436	719325.93	554003.40	1170.090	1170.221	-0.131	Tall Grass
1437	719330.31	554003.36	1170.204	1170.417	-0.213	Tall Grass
1438	719330.71	554008.33	1170.114	1170.478	-0.364	Tall Grass
1439	719326.98	554008.30	1170.064	1170.338	-0.275	Tall Grass
1440	719322.99	554008.28	1170.002	1170.340	-0.338	Tall Grass
1441	719318.72	554008.41	1169.916	1170.202	-0.286	Tall Grass
1442	719313.66	554008.60	1169.903	1170.094	-0.191	Tall Grass
1443	719315.00	554013.59	1169.810	1170.147	-0.337	Tall Grass
1444	719319.87	554013.48	1170.003	1170.299	-0.297	Tall Grass
1445	719324.74	554013.30	1170.148	1170.491	-0.343	Tall Grass
1446	719329.33	554013.29	1170.300	1170.522	-0.223	Tall Grass
1447	719333.97	554013.23	1170.362	1170.687	-0.325	Tall Grass
1448	719334.52	554018.42	1170.383	1170.620	-0.237	Tall Grass
1449	719329.51	554018.69	1170.242	1170.495	-0.253	Tall Grass



<i>Number</i>	<i>Easting</i>	<i>Northing</i>	<i>Known Z</i>	<i>Laser Z</i>	<i>Delta Z</i>	<i>Landcover Type</i>
1450	719324.68	554019.04	1170.126	1170.482	-0.356	Tall Grass
1451	719319.75	554019.24	1170.024	1170.245	-0.221	Tall Grass
1452	719314.68	554019.70	1169.916	1170.071	-0.155	Tall Grass
1453	719316.52	554024.58	1169.968	1170.226	-0.258	Tall Grass
1454	719323.36	554024.33	1170.097	1170.381	-0.284	Tall Grass
1455	719328.05	554024.13	1170.290	1170.500	-0.210	Tall Grass
1456	719331.92	554023.93	1170.358	1170.767	-0.409	Tall Grass
1457	719335.83	554023.68	1170.530	1170.861	-0.331	Tall Grass
1458	640878.86	579669.99	1272.677	1272.775	-0.099	Urban
1459	640874.39	579667.00	1272.550	1272.695	-0.145	Urban
1460	640870.39	579664.42	1272.575	1272.634	-0.059	Urban
1461	640866.49	579662.06	1272.545	1272.655	-0.110	Urban
1462	640862.16	579659.33	1272.493	1272.614	-0.120	Urban
1463	640864.60	579655.96	1272.667	1272.825	-0.158	Urban
1464	640868.31	579657.90	1272.666	1272.845	-0.179	Urban
1465	640871.91	579659.95	1272.747	1272.887	-0.140	Urban
1466	640876.04	579662.47	1272.785	1272.918	-0.133	Urban
1467	640880.32	579665.11	1272.856	1272.941	-0.085	Urban
1468	640881.53	579661.52	1272.890	1272.969	-0.079	Urban
1469	640877.46	579658.85	1272.850	1272.935	-0.085	Urban
1470	640873.11	579656.15	1272.782	1272.887	-0.105	Urban
1471	640869.08	579653.77	1272.766	1272.875	-0.109	Urban
1472	640865.00	579651.25	1272.756	1272.809	-0.053	Urban
1473	640866.66	579648.38	1272.616	1272.699	-0.082	Urban
1474	640871.10	579650.69	1272.630	1272.735	-0.105	Urban
1475	640875.17	579653.22	1272.684	1272.736	-0.052	Urban
1476	640879.43	579655.75	1272.725	1272.804	-0.079	Urban
1477	640884.30	579658.65	1272.758	1272.769	-0.011	Urban
1478	640886.30	579654.94	1272.517	1272.510	0.007	Urban
1479	640882.25	579652.54	1272.473	1272.580	-0.107	Urban
1480	640877.76	579649.91	1272.431	1272.500	-0.069	Urban
1481	640874.15	579647.53	1272.421	1272.497	-0.076	Urban
1482	640869.94	579644.81	1272.352	1272.467	-0.115	Urban
1483	640874.92	579678.55	1270.641	1270.842	-0.201	Low Grass
1484	640870.51	579676.13	1270.527	1270.767	-0.240	Low Grass
1485	640866.46	579673.97	1270.403	1270.686	-0.283	Low Grass
1486	640862.40	579671.67	1270.286	1270.625	-0.339	Low Grass
1487	640857.82	579669.05	1270.376	1270.562	-0.187	Low Grass
1488	640855.76	579671.89	1270.820	1270.972	-0.152	Low Grass
1489	640859.56	579674.37	1270.922	1271.120	-0.198	Low Grass
1490	640864.02	579676.97	1271.023	1271.237	-0.215	Low Grass
1491	640868.10	579679.06	1270.993	1271.257	-0.264	Low Grass
1492	640873.26	579681.92	1271.026	1271.244	-0.218	Low Grass



<i>Number</i>	<i>Easting</i>	<i>Northing</i>	<i>Known Z</i>	<i>Laser Z</i>	<i>Delta Z</i>	<i>Landcover Type</i>
1493	640872.12	579685.26	1271.494	1271.680	-0.186	Low Grass
1494	640867.76	579682.96	1271.506	1271.682	-0.177	Low Grass
1495	640862.74	579680.53	1271.427	1271.650	-0.222	Low Grass
1496	640858.25	579678.53	1271.356	1271.651	-0.295	Low Grass
1497	640854.03	579676.44	1271.416	1271.619	-0.202	Low Grass
1498	640852.95	579679.56	1271.791	1272.004	-0.213	Low Grass
1499	640856.87	579682.06	1271.847	1272.070	-0.222	Low Grass
1500	640861.74	579684.58	1271.935	1272.121	-0.186	Low Grass
1501	640866.15	579686.57	1271.866	1272.058	-0.192	Low Grass
1502	640871.40	579689.06	1271.758	1271.999	-0.241	Low Grass
1503	640870.03	579691.17	1272.040	1272.385	-0.345	Low Grass
1504	640865.58	579688.29	1272.036	1272.404	-0.368	Low Grass
1505	640861.08	579685.97	1272.033	1272.373	-0.340	Low Grass
1506	640856.11	579683.54	1272.035	1272.341	-0.306	Low Grass
1507	640852.01	579681.27	1271.974	1272.236	-0.262	Low Grass
1508	640873.94	579696.61	1272.529	1272.874	-0.346	Tall Grass
1509	640869.33	579694.88	1272.456	1273.026	-0.570	Tall Grass
1510	640863.42	579691.77	1272.610	1273.074	-0.464	Tall Grass
1511	640857.19	579688.63	1272.422	1273.259	-0.836	Tall Grass
1512	640851.45	579685.50	1272.493	1272.964	-0.470	Tall Grass
1513	640849.18	579689.00	1272.521	1272.962	-0.441	Tall Grass
1514	640854.35	579691.11	1272.498	1273.107	-0.610	Tall Grass
1515	640859.46	579693.49	1272.612	1273.081	-0.468	Tall Grass
1516	640865.50	579696.40	1272.472	1273.013	-0.541	Tall Grass
1517	640869.78	579699.36	1272.557	1273.215	-0.658	Tall Grass
1518	640867.85	579703.02	1272.624	1273.124	-0.500	Tall Grass
1519	640863.21	579700.94	1273.011	1273.289	-0.278	Tall Grass
1520	640857.16	579697.78	1272.720	1273.141	-0.420	Tall Grass
1521	640852.65	579695.11	1272.659	1273.143	-0.485	Tall Grass
1522	640847.76	579692.03	1272.739	1273.178	-0.439	Tall Grass
1523	640846.20	579695.57	1272.879	1273.289	-0.410	Tall Grass
1524	640851.43	579698.86	1272.763	1273.184	-0.421	Tall Grass
1525	640856.18	579701.98	1272.854	1273.197	-0.344	Tall Grass
1526	640861.14	579704.61	1272.869	1273.303	-0.434	Tall Grass
1527	640866.67	579707.70	1273.077	1273.513	-0.436	Tall Grass
1528	640864.54	579711.06	1273.315	1273.596	-0.281	Tall Grass
1529	640857.60	579706.92	1273.040	1273.279	-0.239	Tall Grass
1530	640851.88	579703.67	1272.979	1273.212	-0.233	Tall Grass
1531	640846.14	579700.47	1272.903	1273.195	-0.291	Tall Grass
1532	640842.12	579697.82	1272.929	1273.239	-0.309	Tall Grass
1533	640947.51	579659.28	1269.231	1269.455	-0.224	Low Trees
1534	640951.13	579655.79	1269.299	1269.455	-0.156	Low Trees
1535	640952.10	579650.45	1268.564	1268.767	-0.203	Low Trees



<i>Number</i>	<i>Easting</i>	<i>Northing</i>	<i>Known Z</i>	<i>Laser Z</i>	<i>Delta Z</i>	<i>Landcover Type</i>
1536	640956.80	579647.45	1268.301	1268.724	-0.422	Low Trees
1537	640960.58	579641.22	1268.368	1268.587	-0.218	Low Trees
1538	640956.53	579639.44	1268.398	1268.673	-0.276	Low Trees
1539	640953.85	579643.14	1268.549	1268.723	-0.174	Low Trees
1540	640951.05	579646.25	1268.925	1268.955	-0.029	Low Trees
1541	640947.42	579649.45	1269.177	1269.195	-0.018	Low Trees
1542	640942.73	579654.02	1269.432	1269.593	-0.161	Low Trees
1543	640939.68	579657.01	1268.910	1269.171	-0.261	Low Trees
1544	640933.46	579654.19	1268.630	1268.936	-0.306	Low Trees
1545	640935.70	579650.15	1269.057	1269.443	-0.386	Low Trees
1546	640938.85	579645.22	1268.895	1269.304	-0.409	Low Trees
1547	640941.42	579640.50	1268.507	1268.848	-0.342	Low Trees
1548	640943.33	579635.65	1268.361	1268.643	-0.282	Low Trees
1549	640947.82	579638.49	1268.477	1268.728	-0.251	Low Trees
1550	640947.02	579642.15	1268.945	1269.114	-0.168	Low Trees
1551	640944.11	579647.67	1269.189	1269.345	-0.156	Low Trees
1552	640941.71	579651.40	1269.323	1269.552	-0.229	Low Trees
1553	640937.07	579655.52	1268.831	1269.100	-0.269	Low Trees
1554	640956.39	579664.75	1269.637	1269.752	-0.116	Low Trees
1555	640958.80	579658.52	1269.310	1269.513	-0.203	Low Trees
1556	640960.97	579654.05	1268.961	1269.240	-0.279	Low Trees
1557	640963.29	579649.07	1268.626	1268.903	-0.278	Low Trees
1558	640965.39	579644.48	1268.401	1268.648	-0.248	Low Trees
1559	641011.16	579610.40	1262.304	1262.533	-0.229	Tall Trees
1560	641013.50	579605.89	1261.474	1261.476	-0.003	Tall Trees
1561	641017.18	579602.50	1260.291	1260.530	-0.239	Tall Trees
1562	641019.72	579599.50	1259.784	1260.017	-0.232	Tall Trees
1563	641021.05	579596.86	1259.752	1259.842	-0.089	Tall Trees
1564	641017.92	579591.56	1259.417	1259.613	-0.196	Tall Trees
1565	641015.30	579594.32	1259.875	1260.114	-0.239	Tall Trees
1566	641012.98	579597.63	1260.209	1260.508	-0.299	Tall Trees
1567	641011.03	579601.35	1261.080	1261.095	-0.016	Tall Trees
1568	641008.44	579606.09	1261.675	1262.009	-0.334	Tall Trees
1569	641002.30	579605.15	1262.559	1262.936	-0.377	Tall Trees
1570	641003.73	579600.41	1261.638	1261.749	-0.111	Tall Trees
1571	641005.69	579595.69	1260.610	1260.887	-0.277	Tall Trees
1572	641007.97	579590.94	1260.513	1260.549	-0.035	Tall Trees
1573	641011.46	579586.27	1260.021	1260.077	-0.056	Tall Trees
1574	641013.11	579582.67	1258.550	1258.855	-0.305	Tall Trees
1575	641004.45	579579.57	1259.073	1259.600	-0.527	Tall Trees
1576	641000.22	579585.67	1260.446	1260.199	0.247	Tall Trees
1577	641000.54	579592.47	1261.715	1261.168	0.547	Tall Trees
1578	640999.03	579597.07	1261.933	1261.680	0.253	Tall Trees



<i>Number</i>	<i>Easting</i>	<i>Northing</i>	<i>Known Z</i>	<i>Laser Z</i>	<i>Delta Z</i>	<i>Landcover Type</i>
1579	640996.47	579600.68	1262.754	1262.729	0.025	Tall Trees
1580	640987.74	579598.68	1262.954	1263.587	-0.633	Tall Trees
1581	640989.49	579595.26	1262.843	1263.069	-0.227	Tall Trees
1582	640995.23	579590.52	1261.315	1261.503	-0.188	Tall Trees
1583	640996.59	579585.38	1260.800	1260.891	-0.091	Tall Trees
1584	640998.67	579580.96	1259.773	1259.832	-0.059	Tall Trees
1585	640997.98	579576.98	1259.162	1259.591	-0.429	Tall Trees
1586	640991.88	579580.35	1260.395	1260.638	-0.243	Tall Trees
1588	640987.35	579588.41	1261.628	1262.102	-0.475	Tall Trees
1589	640983.97	579590.83	1262.754	1263.010	-0.256	Tall Trees
1590	640980.30	579595.33	1263.707	1263.888	-0.181	Tall Trees
1591	606412.41	556637.19	1255.136	1255.150	-0.015	Urban
1592	606406.45	556637.26	1255.098	1255.097	0.001	Urban
1593	606400.11	556637.30	1255.006	1255.062	-0.056	Urban
1594	606393.40	556637.29	1254.925	1255.032	-0.106	Urban
1595	606386.54	556637.43	1254.872	1254.939	-0.068	Urban
1596	606386.24	556631.87	1255.003	1254.996	0.007	Urban
1597	606392.11	556631.51	1255.051	1255.113	-0.062	Urban
1598	606398.16	556631.31	1255.112	1255.186	-0.075	Urban
1599	606404.19	556631.25	1255.179	1255.190	-0.011	Urban
1600	606410.25	556631.16	1255.246	1255.286	-0.040	Urban
1601	606410.27	556626.66	1255.269	1255.331	-0.063	Urban
1602	606402.52	556626.78	1255.196	1255.238	-0.042	Urban
1603	606396.09	556626.91	1255.154	1255.215	-0.061	Urban
1604	606390.53	556626.99	1255.095	1255.132	-0.037	Urban
1605	606385.39	556627.04	1255.035	1255.040	-0.005	Urban
1606	606384.46	556623.38	1255.047	1255.110	-0.064	Urban
1607	606390.96	556622.99	1255.123	1255.187	-0.064	Urban
1608	606397.60	556622.77	1255.210	1255.327	-0.117	Urban
1609	606403.69	556622.56	1255.275	1255.302	-0.027	Urban
1610	606410.35	556622.53	1255.302	1255.390	-0.088	Urban
1611	606410.52	556616.62	1255.399	1255.451	-0.052	Urban
1612	606405.07	556616.57	1255.361	1255.394	-0.033	Urban
1613	606399.12	556616.43	1255.271	1255.327	-0.056	Urban
1614	606392.73	556616.62	1255.222	1255.294	-0.072	Urban
1615	606385.86	556616.57	1255.133	1255.216	-0.083	Urban
1616	606390.95	556663.02	1252.422	1252.754	-0.332	Tall Grass
1617	606384.89	556663.48	1252.377	1252.603	-0.226	Tall Grass
1618	606378.95	556664.00	1252.444	1252.657	-0.213	Tall Grass
1619	606372.61	556665.03	1252.437	1252.633	-0.196	Tall Grass
1620	606366.25	556665.64	1252.191	1252.747	-0.556	Tall Grass
1621	606367.40	556671.63	1252.240	1252.690	-0.450	Tall Grass



<i>Number</i>	<i>Easting</i>	<i>Northing</i>	<i>Known Z</i>	<i>Laser Z</i>	<i>Delta Z</i>	<i>Landcover Type</i>
1622	606373.28	556671.41	1252.508	1252.816	-0.308	Tall Grass
1623	606379.39	556671.08	1252.552	1252.921	-0.370	Tall Grass
1624	606385.18	556671.16	1252.626	1253.229	-0.604	Tall Grass
1625	606391.11	556670.86	1252.721	1253.319	-0.598	Tall Grass
1626	606391.95	556674.93	1252.714	1253.214	-0.500	Tall Grass
1627	606386.28	556675.51	1252.680	1253.119	-0.439	Tall Grass
1628	606380.26	556676.48	1252.475	1252.877	-0.402	Tall Grass
1629	606375.26	556676.82	1252.369	1252.861	-0.493	Tall Grass
1630	606369.84	556677.62	1252.107	1252.678	-0.572	Tall Grass
1631	606370.55	556682.66	1252.273	1252.806	-0.533	Tall Grass
1632	606377.07	556682.38	1252.348	1252.797	-0.449	Tall Grass
1633	606383.51	556682.71	1252.466	1252.963	-0.497	Tall Grass
1634	606389.64	556683.18	1252.543	1253.185	-0.642	Tall Grass
1635	606395.56	556683.76	1252.695	1253.312	-0.617	Tall Grass
1636	606396.03	556687.23	1252.919	1253.358	-0.439	Tall Grass
1637	606391.00	556687.96	1252.805	1253.512	-0.707	Tall Grass
1638	606384.39	556688.66	1252.556	1253.092	-0.536	Tall Grass
1639	606378.78	556689.36	1252.583	1252.984	-0.402	Tall Grass
1640	606373.50	556689.51	1252.925	1253.173	-0.248	Tall Grass
1641	606447.32	556753.06	1253.983	1253.993	-0.010	Tall Trees
1642	606451.21	556758.22	1253.868	1253.992	-0.124	Tall Trees
1643	606453.84	556761.61	1253.725	1254.078	-0.353	Tall Trees
1645	606464.60	556772.22	1254.337	1254.375	-0.038	Tall Trees
1646	606469.40	556768.57	1254.316	1254.610	-0.294	Tall Trees
1647	606467.92	556761.11	1253.972	1254.198	-0.227	Tall Trees
1648	606465.43	556757.85	1254.062	1254.060	0.002	Tall Trees
1649	606460.39	556751.70	1255.985	1253.887	2.098	Tall Trees
1650	606453.54	556747.87	1253.425	1253.793	-0.368	Tall Trees
1651	606459.32	556745.50	1253.895	1253.830	0.065	Tall Trees
1652	606463.99	556748.56	1253.417	1254.048	-0.630	Tall Trees
1653	606469.11	556750.80	1253.857	1254.072	-0.214	Tall Trees
1654	606475.00	556753.37	1254.288	1254.269	0.019	Tall Trees
1655	606481.16	556754.83	1254.907	1254.531	0.376	Tall Trees
1656	606484.55	556748.98	1254.280	1254.555	-0.275	Tall Trees
1657	606479.38	556745.92	1254.124	1254.379	-0.254	Tall Trees
1658	606475.04	556743.11	1254.078	1254.237	-0.159	Tall Trees
1659	606469.50	556740.57	1253.582	1253.796	-0.213	Tall Trees
1660	606465.66	556734.79	1253.908	1254.111	-0.203	Tall Trees
1661	606473.64	556730.61	1253.826	1253.944	-0.118	Tall Trees
1662	606478.58	556734.30	1254.679	1254.457	0.222	Tall Trees
1664	606486.95	556739.17	1254.710	1254.634	0.076	Tall Trees
1665	606163.90	556634.98	1251.144	1251.539	-0.395	Low Grass
1666	606164.18	556639.99	1251.322	1251.595	-0.273	Low Grass
1667	606164.66	556645.75	1251.501	1251.755	-0.254	Low Grass



<i>Number</i>	<i>Easting</i>	<i>Northing</i>	<i>Known Z</i>	<i>Laser Z</i>	<i>Delta Z</i>	<i>Landcover Type</i>
1668	606164.97	556651.18	1251.666	1251.869	-0.203	Low Grass
1669	606164.88	556656.88	1251.728	1251.989	-0.261	Low Grass
1670	606159.14	556656.60	1251.709	1251.977	-0.268	Low Grass
1671	606158.84	556651.74	1251.667	1251.816	-0.149	Low Grass
1672	606158.46	556647.11	1251.498	1251.743	-0.245	Low Grass
1673	606158.37	556642.12	1251.494	1251.649	-0.155	Low Grass
1674	606157.63	556637.30	1251.326	1251.578	-0.251	Low Grass
1675	606155.90	556633.53	1251.154	1251.477	-0.323	Low Grass
1676	606151.05	556634.14	1251.356	1251.625	-0.269	Low Grass
1677	606151.22	556639.12	1251.566	1251.770	-0.204	Low Grass
1678	606151.84	556644.01	1251.526	1251.771	-0.244	Low Grass
1679	606152.51	556648.84	1251.653	1251.828	-0.175	Low Grass
1680	606152.63	556653.58	1251.835	1251.976	-0.141	Low Grass
1681	606152.87	556658.53	1251.783	1252.051	-0.268	Low Grass
1682	606147.07	556658.27	1251.669	1251.940	-0.271	Low Grass
1683	606147.51	556653.49	1251.785	1251.942	-0.157	Low Grass
1684	606147.75	556649.30	1251.717	1251.943	-0.226	Low Grass
1685	606147.87	556644.93	1251.645	1251.870	-0.225	Low Grass
1686	606147.95	556640.29	1251.690	1251.857	-0.167	Low Grass
1687	606147.82	556635.84	1251.593	1251.772	-0.179	Low Grass
1688	606147.02	556632.62	1251.458	1251.639	-0.181	Low Grass
1689	606140.97	556633.20	1251.440	1251.702	-0.262	Low Grass
1690	606140.47	556638.14	1251.700	1251.915	-0.215	Low Grass
1691	606140.77	556643.20	1251.778	1251.933	-0.155	Low Grass
1692	606140.80	556647.88	1251.675	1251.949	-0.274	Low Grass
1693	606141.14	556652.57	1251.536	1251.892	-0.356	Low Grass
1694	606141.36	556657.69	1251.468	1251.830	-0.362	Low Grass
1695	606141.51	556662.71	1251.691	1251.939	-0.247	Low Grass
1696	611060.94	556598.19	1255.046	1255.525	-0.479	Low Trees
1697	611068.30	556598.11	1255.186	1255.656	-0.470	Low Trees
1698	611074.91	556598.32	1255.231	1255.772	-0.541	Low Trees
1699	611082.06	556598.49	1255.364	1255.853	-0.489	Low Trees
1700	611087.81	556599.10	1255.391	1255.770	-0.379	Low Trees
1701	611088.20	556603.17	1255.406	1255.672	-0.266	Low Trees
1702	611081.75	556602.96	1255.295	1255.726	-0.432	Low Trees
1703	611075.83	556602.82	1255.167	1255.651	-0.485	Low Trees
1704	611069.17	556603.19	1255.244	1255.686	-0.442	Low Trees
1705	611062.17	556603.12	1255.177	1255.820	-0.643	Low Trees
1706	611061.78	556607.88	1255.190	1255.822	-0.633	Low Trees
1707	611067.68	556608.14	1255.342	1255.711	-0.369	Low Trees
1708	611075.02	556608.50	1255.067	1255.548	-0.482	Low Trees
1709	611081.20	556608.53	1255.174	1255.653	-0.479	Low Trees
1710	611088.48	556608.35	1255.205	1255.727	-0.522	Low Trees



<i>Number</i>	<i>Easting</i>	<i>Northing</i>	<i>Known Z</i>	<i>Laser Z</i>	<i>Delta Z</i>	<i>Landcover Type</i>
1711	611092.14	556614.27	1255.334	1255.792	-0.459	Low Trees
1712	611086.35	556616.01	1255.366	1255.673	-0.307	Low Trees
1713	611080.49	556616.43	1255.152	1255.570	-0.418	Low Trees
1714	611074.04	556616.69	1255.165	1255.539	-0.374	Low Trees
1715	611065.95	556617.18	1255.061	1255.427	-0.365	Low Trees
1716	611065.75	556622.98	1254.693	1255.117	-0.424	Low Trees
1717	611073.51	556623.02	1254.825	1255.266	-0.441	Low Trees
1718	611081.36	556623.17	1254.857	1255.318	-0.461	Low Trees
1719	611088.47	556622.58	1254.861	1255.354	-0.493	Low Trees
1720	611098.15	556622.19	1254.933	1255.522	-0.588	Low Trees
1721	692896.08	486230.87	1090.748	1090.721	0.027	Low Grass
1722	692891.69	486225.15	1090.830	1090.671	0.159	Low Grass
1723	692887.26	486219.29	1090.849	1090.799	0.050	Low Grass
1724	692883.14	486212.97	1090.886	1090.789	0.097	Low Grass
1725	692879.84	486207.12	1090.936	1090.837	0.099	Low Grass
1726	692883.92	486202.74	1091.045	1090.924	0.122	Low Grass
1727	692887.25	486207.13	1090.927	1090.913	0.013	Low Grass
1728	692890.50	486211.82	1090.932	1090.865	0.067	Low Grass
1729	692893.91	486216.80	1090.930	1090.758	0.172	Low Grass
1730	692898.42	486222.27	1090.902	1090.819	0.083	Low Grass
1731	692903.39	486217.80	1090.970	1090.942	0.028	Low Grass
1732	692898.33	486211.79	1091.003	1090.937	0.066	Low Grass
1733	692893.65	486206.17	1090.986	1090.971	0.015	Low Grass
1734	692889.12	486200.45	1091.104	1091.037	0.067	Low Grass
1735	692885.81	486196.49	1091.133	1091.016	0.116	Low Grass
1736	692891.31	486191.22	1091.198	1091.118	0.080	Low Grass
1737	692896.59	486194.83	1091.176	1091.086	0.090	Low Grass
1738	692901.08	486200.30	1091.108	1091.011	0.097	Low Grass
1739	692905.60	486205.23	1091.089	1091.053	0.036	Low Grass
1740	692910.48	486210.69	1091.059	1090.967	0.092	Low Grass
1741	692915.68	486206.60	1091.140	1091.151	-0.011	Low Grass
1742	692912.82	486201.30	1091.182	1091.116	0.066	Low Grass
1743	692909.48	486195.85	1091.246	1091.185	0.061	Low Grass
1744	692906.06	486190.48	1091.243	1091.236	0.006	Low Grass
1745	692902.05	486185.24	1091.151	1091.128	0.023	Low Grass
1746	692922.78	486261.43	1089.795	1089.756	0.039	Low Grass
1747	692917.05	486266.18	1089.240	1089.323	-0.083	Low Grass
1748	692912.18	486270.18	1089.321	1089.438	-0.116	Low Grass
1749	692906.30	486275.06	1089.313	1089.396	-0.083	Low Grass
1750	692900.20	486279.87	1089.332	1089.511	-0.179	Low Grass
1751	692903.75	486285.48	1089.345	1089.396	-0.051	Low Grass
1752	692908.76	486281.50	1089.220	1089.325	-0.104	Low Grass
1753	692914.36	486277.14	1089.092	1089.182	-0.090	Low Grass



<b>Number</b>	<b>Easting</b>	<b>Northing</b>	<b>Known Z</b>	<b>Laser Z</b>	<b>Delta Z</b>	<b>Landcover Type</b>
1754	692919.72	486272.84	1089.183	1089.223	-0.040	Low Grass
1755	692927.18	486267.04	1089.640	1089.552	0.088	Low Grass
1756	692931.66	486271.26	1089.283	1089.363	-0.080	Low Grass
1757	692925.81	486275.83	1089.218	1089.235	-0.018	Low Grass
1758	692921.16	486279.69	1089.223	1089.273	-0.050	Low Grass
1759	692916.78	486283.59	1089.245	1089.254	-0.009	Low Grass
1760	692911.25	486288.26	1089.234	1089.295	-0.061	Low Grass
1761	692913.98	486291.95	1089.171	1089.246	-0.075	Low Grass
1762	692917.86	486289.22	1089.260	1089.219	0.041	Low Grass
1763	692922.02	486285.96	1089.215	1089.258	-0.044	Low Grass
1764	692927.22	486281.96	1089.250	1089.312	-0.062	Low Grass
1765	692932.79	486277.35	1089.220	1089.271	-0.051	Low Grass
1766	692936.31	486281.37	1089.229	1089.261	-0.032	Low Grass
1767	692932.31	486284.60	1089.015	1089.180	-0.165	Low Grass
1768	692927.77	486288.33	1089.214	1089.272	-0.058	Low Grass
1769	692923.60	486291.57	1089.182	1089.209	-0.027	Low Grass
1770	692919.10	486295.49	1089.306	1089.224	0.082	Low Grass
1771	694097.57	486061.10	1099.922	1100.024	-0.102	Low Trees
1772	694099.49	486066.29	1100.394	1100.335	0.059	Low Trees
1773	694101.96	486071.26	1100.521	1100.472	0.050	Low Trees
1774	694103.74	486076.28	1100.147	1100.235	-0.087	Low Trees
1775	694106.41	486082.37	1100.713	1100.729	-0.015	Low Trees
1776	694110.08	486080.28	1100.798	1100.784	0.014	Low Trees
1777	694108.86	486076.00	1100.489	1100.493	-0.004	Low Trees
1778	694107.29	486071.28	1100.565	1100.565	0.000	Low Trees
1779	694106.16	486066.66	1100.726	1100.614	0.112	Low Trees
1780	694103.68	486058.91	1100.128	1100.115	0.013	Low Trees
1781	694108.58	486057.26	1100.123	1100.266	-0.143	Low Trees
1782	694111.24	486063.06	1100.680	1100.655	0.025	Low Trees
1783	694112.85	486069.70	1100.412	1100.514	-0.101	Low Trees
1784	694114.42	486074.17	1100.266	1100.342	-0.076	Low Trees
1785	694115.47	486077.14	1100.909	1100.758	0.150	Low Trees
1786	694120.05	486075.08	1100.847	1100.716	0.130	Low Trees
1787	694116.95	486070.31	1100.196	1100.342	-0.147	Low Trees
1788	694115.42	486066.97	1100.400	1100.479	-0.079	Low Trees
1789	694113.55	486062.79	1100.390	1100.727	-0.338	Low Trees
1790	694111.71	486055.69	1100.108	1100.265	-0.157	Low Trees
1791	694116.20	486052.87	1100.366	1100.332	0.034	Low Trees
1792	694118.05	486059.66	1100.560	1100.530	0.030	Low Trees
1793	694121.81	486066.82	1099.735	1100.158	-0.424	Low Trees
1794	694124.74	486072.34	1101.136	1101.232	-0.096	Low Trees
1795	694127.79	486076.96	1101.205	1101.395	-0.190	Low Trees
1796	694115.75	486028.96	1099.985	1100.108	-0.123	Tall Grass
1797	694122.18	486027.32	1100.039	1100.185	-0.145	Tall Grass



<i>Number</i>	<i>Easting</i>	<i>Northing</i>	<i>Known Z</i>	<i>Laser Z</i>	<i>Delta Z</i>	<i>Landcover Type</i>
1798	694128.64	486025.48	1100.121	1100.249	-0.129	Tall Grass
1799	694135.41	486023.22	1100.114	1100.212	-0.098	Tall Grass
1800	694142.78	486020.64	1100.224	1100.320	-0.096	Tall Grass
1801	694141.16	486014.92	1100.240	1100.289	-0.049	Tall Grass
1802	694135.11	486017.30	1099.957	1100.105	-0.148	Tall Grass
1803	694128.70	486019.62	1100.007	1100.091	-0.084	Tall Grass
1804	694122.86	486021.67	1100.052	1100.008	0.044	Tall Grass
1805	694116.82	486024.91	1099.881	1100.018	-0.137	Tall Grass
1806	694113.54	486019.36	1099.864	1100.006	-0.142	Tall Grass
1807	694120.01	486016.69	1099.935	1100.066	-0.131	Tall Grass
1808	694127.94	486013.22	1100.005	1099.960	0.045	Tall Grass
1809	694134.36	486010.31	1100.092	1100.119	-0.027	Tall Grass
1810	694140.52	486007.62	1100.072	1100.151	-0.079	Tall Grass
1811	694139.82	486002.70	1100.146	1100.428	-0.282	Tall Grass
1812	694133.18	486004.03	1100.034	1100.221	-0.188	Tall Grass
1813	694126.01	486006.07	1100.092	1100.099	-0.006	Tall Grass
1814	694120.62	486008.36	1100.028	1100.076	-0.047	Tall Grass
1815	694115.38	486010.51	1099.922	1100.022	-0.100	Tall Grass
1816	694114.19	486004.98	1099.831	1099.912	-0.081	Tall Grass
1817	694120.67	486002.78	1099.964	1099.951	0.013	Tall Grass
1818	694127.14	486000.86	1099.921	1100.028	-0.106	Tall Grass
1819	694133.59	485998.74	1100.095	1100.059	0.036	Tall Grass
1820	694140.45	485996.90	1100.102	1100.195	-0.093	Tall Grass
1821	694079.86	483886.13	1097.063	1097.706	-0.643	Tall Trees
1824	694080.28	483876.89	1096.460	1096.734	-0.274	Tall Trees
1825	694080.67	483872.02	1096.430	1096.494	-0.063	Tall Trees
1826	694080.85	483867.92	1096.271	1096.432	-0.161	Tall Trees
1827	694080.95	483862.54	1095.847	1096.037	-0.190	Tall Trees
1828	694077.97	483862.38	1095.759	1096.093	-0.333	Tall Trees
1829	694077.58	483866.99	1096.008	1096.371	-0.363	Tall Trees
1830	694076.83	483871.95	1096.659	1096.926	-0.267	Tall Trees
1831	694076.55	483876.86	1096.451	1096.831	-0.380	Tall Trees
1832	694076.07	483883.66	1097.160	1097.346	-0.186	Tall Trees
1833	694070.20	483883.57	1097.098	1097.424	-0.326	Tall Trees
1834	694070.20	483878.44	1096.735	1096.985	-0.250	Tall Trees
1835	694070.32	483873.65	1096.822	1096.940	-0.118	Tall Trees
1836	694070.17	483867.75	1096.524	1096.679	-0.155	Tall Trees
1837	694069.54	483863.41	1096.268	1096.365	-0.096	Tall Trees
1838	694065.14	483860.30	1096.095	1096.246	-0.150	Tall Trees
1839	694064.36	483864.81	1096.195	1096.451	-0.256	Tall Trees
1840	694064.57	483867.78	1096.449	1096.725	-0.277	Tall Trees
1841	694062.75	483873.33	1097.004	1097.213	-0.209	Tall Trees



<b>Number</b>	<b>Easting</b>	<b>Northing</b>	<b>Known Z</b>	<b>Laser Z</b>	<b>Delta Z</b>	<b>Landcover Type</b>
1842	694061.87	483881.75	1097.266	1097.574	-0.308	Tall Trees
1843	694056.87	483882.12	1097.407	1097.578	-0.172	Tall Trees
1844	694057.02	483876.54	1097.199	1097.401	-0.202	Tall Trees
1845	694057.95	483869.90	1096.848	1097.150	-0.302	Tall Trees
1846	694059.25	483864.28	1096.311	1096.625	-0.314	Tall Trees
1847	694058.59	483858.79	1096.564	1096.733	-0.169	Tall Trees
1848	694828.53	400311.86	969.902	969.972	-0.070	Low Grass
1849	694833.48	400311.07	969.729	969.868	-0.140	Low Grass
1850	694833.38	400311.05	969.710	969.869	-0.159	Low Grass
1851	694838.04	400310.69	969.635	969.740	-0.105	Low Grass
1852	694843.41	400309.86	969.540	969.674	-0.134	Low Grass
1853	694848.45	400309.32	969.503	969.516	-0.013	Low Grass
1854	694853.58	400308.74	969.397	969.476	-0.079	Low Grass
1855	694852.22	400304.63	969.536	969.608	-0.072	Low Grass
1856	694847.68	400305.47	969.578	969.661	-0.082	Low Grass
1857	694843.60	400306.07	969.644	969.656	-0.012	Low Grass
1858	694839.30	400306.83	969.789	969.723	0.065	Low Grass
1859	694834.94	400308.18	969.698	969.851	-0.154	Low Grass
1860	694830.78	400308.07	969.878	969.897	-0.019	Low Grass
1861	694830.88	400303.40	969.968	969.965	0.003	Low Grass
1862	694835.67	400303.16	969.682	969.826	-0.144	Low Grass
1863	694841.10	400302.17	969.634	969.775	-0.141	Low Grass
1864	694845.45	400301.75	969.651	969.700	-0.049	Low Grass
1865	694850.04	400301.46	969.542	969.614	-0.072	Low Grass
1866	694851.10	400296.90	969.698	969.693	0.006	Low Grass
1867	694847.54	400296.96	969.703	969.800	-0.097	Low Grass
1868	694842.92	400297.63	969.733	969.845	-0.111	Low Grass
1869	694838.53	400297.72	969.836	969.956	-0.120	Low Grass
1870	694834.35	400298.00	969.779	969.873	-0.094	Low Grass
1871	694829.72	400298.67	969.904	969.992	-0.088	Low Grass
1872	694829.44	400293.72	969.992	970.106	-0.113	Low Grass
1873	694833.60	400292.92	969.884	970.054	-0.171	Low Grass
1874	694837.74	400291.96	969.864	969.981	-0.117	Low Grass
1875	694841.36	400291.13	969.909	970.036	-0.127	Low Grass
1876	694845.79	400290.19	969.763	969.972	-0.209	Low Grass
1877	694850.05	400289.11	969.814	969.904	-0.090	Low Grass
1878	694853.61	400288.60	969.623	969.720	-0.097	Low Grass
1879	694871.05	400294.17	969.523	969.562	-0.039	Tall Grass
1880	694874.03	400291.61	969.519	969.658	-0.139	Tall Grass
1881	694877.46	400288.27	969.484	969.669	-0.185	Tall Grass
1882	694880.55	400284.90	969.619	969.805	-0.185	Tall Grass
1883	694882.89	400281.20	969.897	969.918	-0.021	Tall Grass
1884	694884.86	400277.86	969.634	969.794	-0.160	Tall Grass
1885	694888.31	400279.62	969.470	969.752	-0.281	Tall Grass



<i>Number</i>	<i>Easting</i>	<i>Northing</i>	<i>Known Z</i>	<i>Laser Z</i>	<i>Delta Z</i>	<i>Landcover Type</i>
1886	694886.33	400283.26	969.436	969.671	-0.235	Tall Grass
1887	694883.80	400286.27	969.328	969.572	-0.243	Tall Grass
1888	694881.37	400289.50	969.293	969.403	-0.110	Tall Grass
1889	694878.75	400292.83	969.298	969.440	-0.142	Tall Grass
1890	694875.65	400295.95	969.380	969.506	-0.125	Tall Grass
1891	694878.28	400299.50	969.351	969.369	-0.018	Tall Grass
1892	694880.80	400296.10	969.366	969.473	-0.107	Tall Grass
1893	694883.20	400292.65	969.346	969.430	-0.084	Tall Grass
1894	694885.26	400288.92	969.267	969.572	-0.304	Tall Grass
1895	694887.64	400285.61	969.377	969.522	-0.145	Tall Grass
1896	694890.05	400281.60	969.496	969.634	-0.138	Tall Grass
1897	694892.93	400278.60	969.511	969.648	-0.136	Tall Grass
1898	694896.74	400281.74	969.432	969.524	-0.092	Tall Grass
1899	694893.95	400285.03	969.462	969.603	-0.141	Tall Grass
1900	694890.83	400288.16	969.369	969.463	-0.094	Tall Grass
1901	694888.31	400291.41	969.287	969.440	-0.154	Tall Grass
1902	694885.79	400294.73	969.221	969.326	-0.105	Tall Grass
1903	694882.38	400298.51	969.280	969.446	-0.166	Tall Grass
1904	694885.03	400301.84	969.356	969.447	-0.091	Tall Grass
1905	694888.04	400299.03	969.428	969.420	0.008	Tall Grass
1906	694891.28	400295.81	969.351	969.369	-0.018	Tall Grass
1907	694894.77	400292.55	969.133	969.398	-0.264	Tall Grass
1908	694897.43	400289.68	969.189	969.447	-0.258	Tall Grass
1909	694900.05	400286.08	969.196	969.390	-0.194	Tall Grass
1910	694902.62	400283.09	969.266	969.354	-0.088	Tall Grass
1911	694818.62	400298.33	970.146	970.125	0.022	Urban
1912	694815.06	400301.13	970.198	970.162	0.036	Urban
1913	694811.45	400303.00	970.256	970.185	0.071	Urban
1914	694807.97	400304.93	970.260	970.338	-0.078	Urban
1915	694804.69	400306.85	970.296	970.252	0.044	Urban
1916	694802.87	400303.43	970.286	970.332	-0.046	Urban
1917	694807.63	400301.79	970.266	970.283	-0.017	Urban
1918	694810.79	400299.93	970.227	970.244	-0.018	Urban
1919	694814.08	400296.46	970.237	970.160	0.077	Urban
1920	694817.80	400294.47	970.175	970.182	-0.007	Urban
1921	694816.14	400289.84	970.279	970.242	0.037	Urban
1922	694812.59	400291.42	970.296	970.353	-0.057	Urban
1923	694809.17	400292.78	970.378	970.326	0.051	Urban
1924	694805.37	400294.81	970.348	970.368	-0.020	Urban
1925	694802.36	400296.23	970.373	970.363	0.010	Urban
1926	694799.09	400297.73	970.357	970.372	-0.015	Urban
1927	694798.14	400293.09	970.421	970.421	0.000	Urban
1928	694802.01	400291.30	970.381	970.357	0.024	Urban
1929	694806.07	400289.53	970.430	970.366	0.064	Urban



<i>Number</i>	<i>Easting</i>	<i>Northing</i>	<i>Known Z</i>	<i>Laser Z</i>	<i>Delta Z</i>	<i>Landcover Type</i>
1930	694809.85	400287.77	970.364	970.317	0.047	Urban
1931	694813.92	400286.15	970.302	970.323	-0.021	Urban
1932	694817.29	400284.28	970.318	970.279	0.039	Urban
1933	694814.89	400280.26	970.437	970.473	-0.036	Urban
1934	694810.99	400282.13	970.425	970.480	-0.055	Urban
1935	694807.04	400284.02	970.432	970.412	0.020	Urban
1936	694803.58	400285.65	970.463	970.359	0.104	Urban
1937	694799.79	400287.61	970.425	970.419	0.005	Urban
1938	694796.28	400289.43	970.457	970.374	0.083	Urban
1939	694942.61	400322.75	969.032	969.273	-0.241	Low Trees
1940	694946.69	400323.20	969.085	969.383	-0.298	Low Trees
1941	694951.73	400323.41	969.022	969.314	-0.292	Low Trees
1942	694955.60	400323.79	969.133	969.404	-0.271	Low Trees
1943	694960.73	400324.23	968.981	969.297	-0.315	Low Trees
1944	694960.81	400328.18	968.912	969.191	-0.279	Low Trees
1945	694956.75	400328.08	969.050	969.342	-0.291	Low Trees
1946	694952.35	400327.75	969.036	969.200	-0.165	Low Trees
1947	694947.76	400327.70	969.037	969.247	-0.210	Low Trees
1948	694942.91	400328.02	969.016	969.232	-0.216	Low Trees
1949	694941.91	400332.24	969.178	969.388	-0.211	Low Trees
1950	694946.11	400333.40	969.063	969.421	-0.359	Low Trees
1951	694949.90	400335.37	969.230	969.336	-0.107	Low Trees
1952	694954.33	400336.29	969.163	969.366	-0.203	Low Trees
1953	694958.93	400338.31	969.120	969.373	-0.253	Low Trees
1954	694961.21	400343.57	969.342	969.532	-0.190	Low Trees
1955	694954.44	400341.73	969.321	969.390	-0.069	Low Trees
1956	694947.79	400340.11	969.193	969.236	-0.043	Low Trees
1957	694943.40	400340.77	969.460	969.665	-0.205	Low Trees
1958	694937.77	400341.19	969.304	969.611	-0.306	Low Trees
1959	694936.70	400346.81	969.323	969.588	-0.265	Low Trees
1960	694940.23	400350.01	969.299	969.496	-0.197	Low Trees
1961	694944.64	400352.05	969.178	969.576	-0.398	Low Trees
1962	694949.57	400354.64	969.220	969.397	-0.178	Low Trees
1963	694954.27	400351.46	969.089	969.635	-0.547	Low Trees
1964	694959.00	400350.37	969.323	969.711	-0.389	Low Trees
1965	694948.24	400356.53	969.004	969.413	-0.408	Tall Trees
1966	694943.44	400360.93	969.211	969.530	-0.319	Tall Trees
1967	694939.48	400363.33	969.045	969.305	-0.260	Tall Trees
1968	694934.98	400366.25	969.246	969.298	-0.052	Tall Trees
1969	694932.25	400368.71	968.917	969.416	-0.499	Tall Trees
1970	694928.43	400370.41	969.336	969.354	-0.018	Tall Trees
1971	694928.89	400375.17	969.330	969.388	-0.058	Tall Trees



<i>Number</i>	<i>Easting</i>	<i>Northing</i>	<i>Known Z</i>	<i>Laser Z</i>	<i>Delta Z</i>	<i>Landcover Type</i>
1972	694932.36	400372.70	969.516	969.394	0.121	Tall Trees
1973	694936.68	400370.41	969.389	969.559	-0.170	Tall Trees
1974	694941.05	400367.24	969.018	969.350	-0.332	Tall Trees
1975	694946.05	400365.79	968.892	969.385	-0.493	Tall Trees
1976	694948.07	400369.71	969.068	969.345	-0.277	Tall Trees
1977	694945.45	400373.44	969.130	969.388	-0.258	Tall Trees
1978	694940.35	400376.49	968.770	969.439	-0.669	Tall Trees
1979	694937.90	400379.95	968.840	969.476	-0.636	Tall Trees
1980	694934.50	400382.71	969.200	969.203	-0.002	Tall Trees
1981	694938.77	400385.10	968.832	969.215	-0.383	Tall Trees
1982	694942.77	400382.23	968.911	969.347	-0.436	Tall Trees
1983	694945.69	400379.28	969.106	969.345	-0.239	Tall Trees
1984	694948.98	400376.46	969.138	969.551	-0.413	Tall Trees
1985	694951.07	400364.50	969.036	969.313	-0.277	Tall Trees
1986	694955.13	400371.00	969.093	969.442	-0.349	Tall Trees
1987	694957.89	400373.85	971.245	969.392	1.852	Tall Trees
1988	694954.64	400377.61	969.118	969.500	-0.382	Tall Trees
1989	694951.95	400381.61	969.141	969.357	-0.216	Tall Trees
1990	694949.44	400383.84	968.991	969.196	-0.205	Tall Trees
1991	694947.38	400390.60	968.863	969.378	-0.515	Tall Trees
1992	694946.03	400394.89	968.893	969.077	-0.184	Tall Trees
1993	653884.33	418580.95	972.039	971.880	0.159	Urban
1994	653885.52	418585.41	972.189	972.110	0.080	Urban
1995	653886.98	418589.93	972.207	972.164	0.043	Urban
1996	653888.38	418594.55	972.203	972.135	0.069	Urban
1997	653889.79	418599.27	972.045	972.014	0.032	Urban
1998	653891.20	418603.65	971.883	971.794	0.089	Urban
1999	653895.90	418602.38	971.873	971.827	0.046	Urban
2000	653894.98	418597.65	972.049	972.045	0.004	Urban
2001	653894.56	418593.29	972.126	972.105	0.022	Urban
2002	653894.67	418588.71	972.189	972.166	0.023	Urban
2003	653892.72	418584.14	972.117	972.047	0.070	Urban
2004	653891.84	418579.45	971.970	972.016	-0.046	Urban
2005	653897.51	418578.66	972.016	971.947	0.069	Urban
2006	653899.21	418583.37	972.089	972.078	0.011	Urban
2007	653900.67	418587.43	972.139	972.131	0.008	Urban
2008	653901.57	418591.82	972.080	972.083	-0.003	Urban
2009	653902.63	418595.96	972.018	971.945	0.073	Urban
2010	653903.61	418600.30	971.834	971.827	0.007	Urban
2011	653909.11	418599.04	971.837	971.802	0.035	Urban
2012	653908.04	418594.53	971.998	971.976	0.023	Urban
2013	653907.45	418590.35	972.096	972.057	0.039	Urban
2014	653907.01	418586.13	972.128	972.103	0.025	Urban
2015	653906.19	418581.82	972.059	972.027	0.033	Urban



<i>Number</i>	<i>Easting</i>	<i>Northing</i>	<i>Known Z</i>	<i>Laser Z</i>	<i>Delta Z</i>	<i>Landcover Type</i>
2016	653905.27	418576.91	972.004	971.942	0.062	Urban
2017	653911.01	418575.36	972.018	971.910	0.108	Urban
2018	653912.57	418580.71	972.089	972.089	0.000	Urban
2019	653914.08	418585.59	972.119	972.103	0.017	Urban
2020	653915.16	418590.00	972.049	972.012	0.037	Urban
2021	653915.87	418594.01	971.943	971.961	-0.018	Urban
2022	653916.46	418597.68	971.792	971.827	-0.035	Urban
2023	653921.48	418613.82	970.967	971.250	-0.284	Low Grass
2024	653922.22	418618.74	970.988	971.153	-0.165	Low Grass
2025	653922.98	418622.85	970.956	971.112	-0.157	Low Grass
2026	653923.60	418626.98	971.033	971.167	-0.134	Low Grass
2027	653924.12	418630.91	971.096	971.270	-0.174	Low Grass
2028	653919.30	418631.79	971.035	971.270	-0.235	Low Grass
2029	653918.22	418627.46	970.953	971.138	-0.184	Low Grass
2030	653917.43	418623.98	970.931	971.110	-0.179	Low Grass
2031	653915.76	418619.82	970.923	971.122	-0.199	Low Grass
2032	653914.72	418615.86	970.933	971.140	-0.207	Low Grass
2033	653909.04	418616.19	970.781	970.950	-0.169	Low Grass
2034	653909.49	418620.34	970.946	971.119	-0.173	Low Grass
2035	653909.32	418624.97	970.909	971.072	-0.163	Low Grass
2036	653910.62	418629.75	970.820	971.049	-0.229	Low Grass
2037	653911.65	418634.18	970.859	971.055	-0.196	Low Grass
2038	653912.26	418638.31	971.068	971.158	-0.091	Low Grass
2039	653907.40	418639.18	970.961	971.140	-0.180	Low Grass
2040	653906.53	418634.24	970.870	971.044	-0.174	Low Grass
2041	653905.38	418630.63	970.925	971.100	-0.174	Low Grass
2042	653904.36	418626.40	970.985	971.148	-0.162	Low Grass
2043	653903.86	418622.09	970.965	971.129	-0.165	Low Grass
2044	653902.91	418617.78	970.628	970.873	-0.245	Low Grass
2045	653897.65	418619.17	970.662	970.858	-0.196	Low Grass
2046	653897.73	418623.51	971.067	971.183	-0.116	Low Grass
2047	653897.70	418629.71	971.066	971.252	-0.186	Low Grass
2048	653897.82	418634.44	970.968	971.119	-0.151	Low Grass
2049	653897.74	418639.60	971.000	971.133	-0.133	Low Grass
2050	653897.70	418644.54	971.017	971.151	-0.134	Low Grass
2051	653819.51	418591.12	970.785	971.022	-0.238	Tall Grass
2052	653816.38	418586.92	971.475	971.669	-0.194	Tall Grass
2053	653814.06	418583.72	971.903	972.114	-0.212	Tall Grass
2054	653811.34	418580.05	971.964	972.189	-0.224	Tall Grass
2055	653808.28	418576.37	972.076	972.199	-0.124	Tall Grass
2056	653804.13	418580.09	972.196	972.434	-0.238	Tall Grass
2057	653806.72	418584.77	971.975	972.185	-0.210	Tall Grass



<i>Number</i>	<i>Easting</i>	<i>Northing</i>	<i>Known Z</i>	<i>Laser Z</i>	<i>Delta Z</i>	<i>Landcover Type</i>
2058	653809.46	418588.04	971.525	971.813	-0.288	Tall Grass
2059	653811.58	418591.72	971.037	971.326	-0.289	Tall Grass
2060	653813.22	418595.45	970.644	971.022	-0.378	Tall Grass
2061	653808.11	418597.52	970.569	970.908	-0.339	Tall Grass
2062	653805.83	418593.69	971.040	971.381	-0.341	Tall Grass
2063	653803.68	418589.69	971.525	971.838	-0.313	Tall Grass
2064	653801.38	418586.06	971.961	972.303	-0.342	Tall Grass
2065	653798.73	418582.13	972.143	972.453	-0.310	Tall Grass
2066	653794.47	418583.59	971.842	972.182	-0.340	Tall Grass
2067	653796.60	418588.53	971.701	972.024	-0.323	Tall Grass
2068	653799.07	418592.24	971.278	971.692	-0.414	Tall Grass
2069	653801.66	418595.68	970.947	971.276	-0.329	Tall Grass
2070	653804.06	418599.81	970.497	970.831	-0.334	Tall Grass
2071	653799.65	418602.51	970.426	970.776	-0.350	Tall Grass
2072	653796.00	418598.13	970.814	971.161	-0.348	Tall Grass
2073	653793.73	418593.90	971.189	971.618	-0.430	Tall Grass
2074	653791.42	418590.16	971.513	971.802	-0.289	Tall Grass
2075	653789.49	418585.85	971.658	971.942	-0.284	Tall Grass
2076	653787.70	418582.61	971.731	972.104	-0.374	Tall Grass
2077	653716.95	418992.19	971.860	972.124	-0.264	Tall Trees
2078	653716.09	418997.13	971.637	971.933	-0.296	Tall Trees
2079	653715.86	419001.88	971.332	971.531	-0.199	Tall Trees
2080	653715.88	419006.58	971.734	971.319	0.415	Tall Trees
2081	653715.60	419010.47	970.623	970.809	-0.187	Tall Trees
2082	653719.92	419012.85	970.370	970.581	-0.211	Tall Trees
2083	653720.44	419009.07	970.773	970.779	-0.005	Tall Trees
2084	653719.68	419006.13	970.784	971.108	-0.324	Tall Trees
2085	653718.65	419002.06	971.455	971.493	-0.038	Tall Trees
2086	653717.63	418997.58	971.633	971.889	-0.256	Tall Trees
2087	653725.89	418997.57	971.152	971.397	-0.245	Tall Trees
2088	653725.69	419002.09	970.726	970.885	-0.159	Tall Trees
2089	653726.02	419008.66	970.595	970.784	-0.189	Tall Trees
2090	653724.76	419012.36	970.565	970.720	-0.155	Tall Trees
2091	653723.84	419021.88	970.652	970.619	0.033	Tall Trees
2092	653728.83	419021.67	970.463	970.530	-0.067	Tall Trees
2093	653729.07	419018.06	970.315	970.500	-0.185	Tall Trees
2094	653729.88	419016.29	971.496	970.532	0.965	Tall Trees
2095	653730.10	419011.69	971.548	970.740	0.808	Tall Trees
2096	653731.18	419005.87	970.113	970.380	-0.267	Tall Trees
2097	653731.80	419002.64	970.292	970.896	-0.604	Tall Trees
2098	653735.08	418998.75	971.616	971.520	0.097	Tall Trees
2099	653739.45	419001.75	970.584	970.979	-0.395	Tall Trees



<i>Number</i>	<i>Easting</i>	<i>Northing</i>	<i>Known Z</i>	<i>Laser Z</i>	<i>Delta Z</i>	<i>Landcover Type</i>
2100	653740.29	419007.64	969.707	970.043	-0.336	Tall Trees
2101	653739.81	419011.21	969.974	970.292	-0.318	Tall Trees
2102	653739.25	419015.74	970.467	970.638	-0.171	Tall Trees
2103	653737.82	419017.83	972.436	970.566	1.870	Tall Trees
2104	653737.23	419020.70	972.661	970.522	2.139	Tall Trees
2105	654035.72	418321.25	971.883	972.327	-0.444	Low Trees
2106	654035.40	418317.05	971.909	972.224	-0.315	Low Trees
2107	654035.01	418312.96	971.759	972.236	-0.477	Low Trees
2108	654035.65	418308.19	971.641	972.038	-0.396	Low Trees
2109	654037.43	418302.11	971.799	971.950	-0.151	Low Trees
2110	654041.32	418302.08	971.881	971.849	0.032	Low Trees
2111	654041.52	418306.84	971.884	972.250	-0.366	Low Trees
2112	654041.55	418311.88	971.757	972.050	-0.293	Low Trees
2113	654040.28	418315.89	971.937	972.034	-0.097	Low Trees
2114	654040.31	418319.44	971.949	972.296	-0.347	Low Trees
2115	654039.76	418322.62	971.729	972.315	-0.586	Low Trees
2116	654044.04	418322.34	972.018	972.556	-0.538	Low Trees
2117	654044.16	418319.01	971.828	972.387	-0.559	Low Trees
2118	654045.70	418311.94	972.107	972.167	-0.060	Low Trees
2119	654044.95	418307.52	971.953	972.271	-0.318	Low Trees
2120	654045.39	418302.97	971.875	972.103	-0.229	Low Trees
2121	654049.04	418304.62	972.091	972.288	-0.197	Low Trees
2122	654049.71	418308.83	972.114	972.440	-0.326	Low Trees
2123	654048.78	418313.76	972.269	972.378	-0.109	Low Trees
2124	654047.86	418317.96	972.252	972.691	-0.439	Low Trees
2125	654047.75	418322.75	972.168	973.172	-1.004	Low Trees
2126	654053.96	418322.58	972.154	972.964	-0.810	Low Trees
2127	654053.73	418317.88	972.514	972.828	-0.314	Low Trees
2128	654053.33	418313.36	972.213	972.525	-0.312	Low Trees
2129	654053.28	418308.33	972.196	972.481	-0.285	Low Trees
2130	654053.62	418302.74	972.279	972.621	-0.342	Low Trees
2131	654050.94	418296.88	972.191	972.376	-0.185	Low Trees
2132	654045.40	418297.74	971.901	972.119	-0.218	Low Trees
2133	654040.57	418298.18	971.842	972.005	-0.163	Low Trees
2134	654035.58	418299.14	971.600	971.762	-0.162	Low Trees
2135	654030.45	418299.80	971.407	971.888	-0.481	Low Trees
2136	601223.54	400421.85	981.140	981.223	-0.083	Urban
2137	601221.63	400426.28	981.180	981.184	-0.004	Urban
2138	601219.23	400431.60	981.087	981.184	-0.097	Urban
2139	601217.00	400436.99	981.047	981.125	-0.077	Urban
2140	601214.89	400442.02	980.992	981.071	-0.079	Urban
2141	601218.20	400443.58	981.202	981.334	-0.132	Urban



<i>Number</i>	<i>Easting</i>	<i>Northing</i>	<i>Known Z</i>	<i>Laser Z</i>	<i>Delta Z</i>	<i>Landcover Type</i>
2142	601220.20	400438.96	981.228	981.308	-0.080	Urban
2143	601222.18	400434.44	981.266	981.363	-0.097	Urban
2144	601224.14	400430.02	981.302	981.403	-0.101	Urban
2145	601225.80	400425.32	981.364	981.369	-0.005	Urban
2146	601230.00	400426.80	981.466	981.537	-0.071	Urban
2147	601228.37	400430.81	981.374	981.512	-0.138	Urban
2148	601226.89	400434.78	981.280	981.509	-0.229	Urban
2149	601225.16	400438.87	981.206	981.485	-0.279	Urban
2150	601223.73	400442.31	981.391	981.491	-0.100	Urban
2151	601222.21	400446.52	981.334	981.399	-0.064	Urban
2152	601220.94	400450.21	981.338	981.367	-0.029	Urban
2153	601224.38	400451.99	981.413	981.426	-0.013	Urban
2154	601226.25	400447.76	981.423	981.533	-0.111	Urban
2155	601228.02	400443.65	981.467	981.499	-0.032	Urban
2156	601229.70	400439.60	981.493	981.556	-0.063	Urban
2157	601231.37	400434.99	981.525	981.534	-0.009	Urban
2158	601232.88	400431.31	981.511	981.600	-0.089	Urban
2159	601236.72	400432.37	981.410	981.529	-0.119	Urban
2160	601234.46	400436.83	981.441	981.497	-0.056	Urban
2161	601232.85	400440.91	981.459	981.458	0.001	Urban
2162	601231.25	400445.02	981.479	981.468	0.011	Urban
2163	601229.55	400449.55	981.398	981.415	-0.017	Urban
2164	601227.72	400453.93	981.375	981.382	-0.007	Urban
2165	601226.03	400458.07	981.309	981.380	-0.071	Urban
2166	601168.80	400391.09	978.192	978.489	-0.297	Low Trees
2167	601164.58	400389.52	978.390	978.768	-0.378	Low Trees
2168	601160.48	400387.69	978.131	978.794	-0.662	Low Trees
2169	601156.20	400385.98	978.167	978.639	-0.472	Low Trees
2170	601151.46	400384.64	978.255	978.647	-0.391	Low Trees
2171	601149.46	400388.51	978.202	978.656	-0.454	Low Trees
2172	601152.97	400390.44	978.526	978.703	-0.177	Low Trees
2173	601157.31	400392.31	978.167	978.545	-0.379	Low Trees
2174	601161.54	400394.35	978.272	978.512	-0.240	Low Trees
2175	601165.04	400397.06	978.496	978.813	-0.317	Low Trees
2176	601162.15	400400.88	978.093	978.688	-0.595	Low Trees
2177	601158.91	400399.23	978.383	978.631	-0.248	Low Trees
2178	601154.94	400397.28	978.327	978.787	-0.460	Low Trees
2179	601150.01	400395.30	978.132	978.384	-0.251	Low Trees
2180	601145.20	400394.23	978.038	978.446	-0.408	Low Trees
2181	601142.54	400397.99	978.161	978.523	-0.361	Low Trees
2182	601147.39	400400.49	977.913	978.627	-0.714	Low Trees
2183	601151.59	400402.80	978.009	978.623	-0.615	Low Trees



<i>Number</i>	<i>Easting</i>	<i>Northing</i>	<i>Known Z</i>	<i>Laser Z</i>	<i>Delta Z</i>	<i>Landcover Type</i>
2184	601155.86	400403.51	978.119	978.601	-0.482	Low Trees
2185	601160.36	400404.63	977.937	978.612	-0.675	Low Trees
2186	601159.93	400409.41	978.097	978.500	-0.403	Low Trees
2187	601155.13	400409.50	977.960	978.446	-0.486	Low Trees
2188	601149.47	400410.36	977.961	978.494	-0.533	Low Trees
2189	601143.57	400409.42	978.162	978.440	-0.278	Low Trees
2190	601138.78	400407.80	978.286	978.530	-0.245	Low Trees
2191	601135.23	400406.61	978.280	978.720	-0.439	Low Trees
2192	601053.92	400398.41	976.216	976.625	-0.408	Tall Grass
2193	601050.23	400400.42	976.199	976.629	-0.430	Tall Grass
2194	601045.74	400403.02	976.410	976.668	-0.258	Tall Grass
2195	601041.07	400405.53	976.018	976.690	-0.672	Tall Grass
2196	601037.31	400407.16	976.195	976.936	-0.741	Tall Grass
2197	601039.89	400411.46	976.400	976.970	-0.570	Tall Grass
2198	601042.84	400408.47	976.308	976.722	-0.413	Tall Grass
2199	601045.49	400404.85	976.361	976.827	-0.466	Tall Grass
2200	601051.10	400403.71	976.496	976.775	-0.279	Tall Grass
2201	601055.01	400400.53	976.041	976.573	-0.532	Tall Grass
2202	601058.78	400405.72	976.083	976.919	-0.836	Tall Grass
2203	601054.36	400408.92	976.458	976.637	-0.179	Tall Grass
2204	601050.01	400411.61	976.099	976.693	-0.593	Tall Grass
2205	601046.34	400414.09	976.599	976.917	-0.318	Tall Grass
2206	601041.32	400417.20	976.315	976.941	-0.626	Tall Grass
2207	601043.86	400422.81	976.441	976.853	-0.411	Tall Grass
2208	601050.31	400420.26	976.112	976.767	-0.655	Tall Grass
2209	601055.52	400417.81	976.293	976.889	-0.596	Tall Grass
2210	601060.48	400415.49	976.341	976.819	-0.478	Tall Grass
2211	601065.62	400412.28	976.394	976.713	-0.319	Tall Grass
2212	601067.98	400418.17	976.406	976.747	-0.342	Tall Grass
2213	601063.07	400420.55	976.214	976.776	-0.561	Tall Grass
2214	601057.74	400424.47	976.311	976.687	-0.376	Tall Grass
2215	601053.14	400427.42	976.196	976.773	-0.577	Tall Grass
2216	601048.48	400430.71	976.226	976.809	-0.583	Tall Grass
2217	601044.53	400433.43	976.473	977.022	-0.549	Tall Grass
2218	600658.87	403366.12	980.571	980.450	0.121	Low Grass
2219	600653.79	403366.07	980.083	980.051	0.032	Low Grass
2220	600648.23	403365.93	979.894	979.853	0.042	Low Grass
2221	600643.35	403365.71	979.854	979.836	0.017	Low Grass
2222	600638.71	403365.91	979.866	979.861	0.006	Low Grass
2223	600638.09	403370.60	980.027	980.033	-0.006	Low Grass
2224	600643.30	403370.97	980.112	980.042	0.069	Low Grass
2225	600647.94	403370.80	980.172	980.067	0.105	Low Grass



<i>Number</i>	<i>Easting</i>	<i>Northing</i>	<i>Known Z</i>	<i>Laser Z</i>	<i>Delta Z</i>	<i>Landcover Type</i>
2226	600653.08	403371.29	980.287	980.271	0.016	Low Grass
2227	600657.83	403371.37	980.301	980.342	-0.041	Low Grass
2228	600657.96	403376.87	980.673	980.661	0.012	Low Grass
2229	600652.45	403376.94	980.689	980.591	0.098	Low Grass
2230	600648.00	403377.01	980.466	980.399	0.067	Low Grass
2231	600643.21	403377.37	980.352	980.233	0.119	Low Grass
2232	600639.54	403377.68	980.238	980.216	0.022	Low Grass
2233	600639.72	403382.62	980.348	980.273	0.074	Low Grass
2234	600644.53	403382.33	980.458	980.406	0.053	Low Grass
2235	600649.04	403382.00	980.649	980.534	0.114	Low Grass
2236	600653.80	403381.76	980.897	980.871	0.026	Low Grass
2237	600657.46	403381.86	980.995	981.049	-0.054	Low Grass
2238	600655.54	403387.47	980.790	980.963	-0.174	Low Grass
2239	600650.86	403388.27	980.689	980.649	0.040	Low Grass
2240	600646.17	403388.58	980.435	980.453	-0.018	Low Grass
2241	600641.85	403388.97	980.345	980.313	0.032	Low Grass
2242	600638.49	403389.03	980.417	980.416	0.001	Low Grass
2243	600635.00	403388.90	980.428	980.432	-0.004	Low Grass
2244	600634.83	403383.93	980.457	980.411	0.046	Low Grass
2245	600634.86	403379.69	980.409	980.449	-0.040	Low Grass
2246	600634.97	403375.36	980.296	980.293	0.003	Low Grass
2247	600635.04	403371.21	980.120	980.168	-0.047	Low Grass
2248	600635.13	403367.10	979.957	979.961	-0.004	Low Grass
2249	600851.50	403340.49	980.229	980.404	-0.175	Tall Trees
2250	600853.21	403345.28	980.013	980.251	-0.238	Tall Trees
2251	600856.02	403349.58	980.051	980.225	-0.174	Tall Trees
2252	600859.21	403353.35	979.756	979.790	-0.034	Tall Trees
2253	600861.57	403356.53	979.310	979.672	-0.362	Tall Trees
2254	600863.97	403353.97	980.477	979.794	0.683	Tall Trees
2255	600858.17	403338.18	980.279	980.645	-0.366	Tall Trees
2256	600861.52	403344.08	979.752	980.022	-0.270	Tall Trees
2257	600863.03	403349.45	979.607	979.810	-0.202	Tall Trees
2258	600886.53	403356.93	977.774	979.360	-1.586	Tall Trees
2259	600883.26	403353.33	979.706	979.493	0.213	Tall Trees
2260	600881.17	403351.38	981.361	979.635	1.726	Tall Trees
2261	600873.34	403343.71	979.888	980.119	-0.232	Tall Trees
2262	600869.10	403344.29	979.892	980.110	-0.218	Tall Trees
2263	600869.22	403346.92	979.868	979.893	-0.025	Tall Trees
2264	600868.27	403349.15	979.493	979.700	-0.207	Tall Trees
2265	600842.67	403366.07	978.758	979.130	-0.372	Tall Trees
2266	600840.82	403361.91	978.974	979.535	-0.561	Tall Trees
2267	600838.56	403357.51	979.623	979.768	-0.144	Tall Trees



<i>Number</i>	<i>Easting</i>	<i>Northing</i>	<i>Known Z</i>	<i>Laser Z</i>	<i>Delta Z</i>	<i>Landcover Type</i>
2268	600837.39	403352.66	979.902	979.925	-0.023	Tall Trees
2269	600837.10	403347.26	980.291	980.432	-0.140	Tall Trees
2270	600841.12	403344.81	980.332	980.397	-0.065	Tall Trees
2271	600842.78	403349.75	979.616	979.900	-0.285	Tall Trees
2272	600844.68	403356.52	979.553	979.817	-0.264	Tall Trees
2273	600849.82	403359.95	978.920	979.452	-0.533	Tall Trees
2274	600851.16	403365.78	978.716	979.057	-0.341	Tall Trees
2275	743620.29	457034.20	1042.068	1042.125	-0.057	Urban
2276	743620.04	457029.01	1042.234	1042.144	0.089	Urban
2277	743619.97	457023.02	1042.295	1042.149	0.146	Urban
2278	743619.98	457018.44	1042.418	1042.300	0.117	Urban
2279	743619.83	457012.37	1042.464	1042.293	0.171	Urban
2280	743619.73	457007.13	1042.358	1042.162	0.196	Urban
2281	743619.60	457002.38	1042.280	1042.068	0.211	Urban
2282	743619.63	456997.41	1042.287	1042.145	0.141	Urban
2283	743619.11	456992.16	1042.171	1042.011	0.161	Urban
2284	743619.31	456990.35	1042.153	1042.008	0.145	Urban
2285	743610.31	456990.15	1042.047	1041.937	0.110	Urban
2286	743610.36	456996.65	1042.192	1041.958	0.234	Urban
2287	743610.06	457001.60	1042.215	1042.036	0.179	Urban
2288	743609.40	457006.52	1042.288	1042.046	0.242	Urban
2289	743609.18	457012.08	1042.415	1042.313	0.102	Urban
2290	743608.97	457017.24	1042.379	1042.240	0.139	Urban
2291	743608.77	457022.73	1042.292	1042.175	0.116	Urban
2292	743608.50	457027.79	1042.205	1042.073	0.132	Urban
2293	743608.36	457032.76	1042.037	1042.008	0.029	Urban
2294	743608.09	457034.14	1042.068	1041.982	0.085	Urban
2295	743601.13	457034.11	1041.997	1041.914	0.083	Urban
2296	743600.95	457027.99	1042.139	1041.957	0.182	Urban
2297	743600.66	457022.35	1042.230	1042.159	0.071	Urban
2298	743600.79	457017.31	1042.274	1042.136	0.138	Urban
2299	743600.81	457012.07	1042.345	1042.117	0.228	Urban
2300	743600.85	457006.22	1042.181	1042.121	0.060	Urban
2301	743600.70	457001.09	1042.116	1042.005	0.110	Urban
2302	743600.80	456995.98	1042.078	1041.926	0.151	Urban
2303	743600.65	456990.10	1041.965	1041.896	0.069	Urban
2304	743594.08	456989.97	1041.974	1041.815	0.159	Urban
2305	743594.53	456995.70	1042.137	1041.862	0.275	Urban
2306	743593.97	457001.36	1042.079	1041.988	0.091	Urban
2307	743594.08	457006.22	1042.180	1042.107	0.073	Urban
2308	743593.63	457011.92	1042.236	1042.179	0.057	Urban
2309	743593.48	457017.33	1042.232	1042.111	0.121	Urban



<i>Number</i>	<i>Easting</i>	<i>Northing</i>	<i>Known Z</i>	<i>Laser Z</i>	<i>Delta Z</i>	<i>Landcover Type</i>
2310	743593.36	457022.51	1042.162	1042.089	0.073	Urban
2311	743593.35	457027.78	1042.061	1042.073	-0.012	Urban
2312	743593.21	457033.90	1041.952	1041.881	0.071	Urban
2313	743586.38	457033.72	1041.929	1041.905	0.024	Urban
2314	743586.43	457028.10	1042.045	1041.972	0.074	Urban
2315	743586.20	457022.80	1042.113	1041.994	0.119	Urban
2316	743586.36	457017.51	1042.185	1042.163	0.022	Urban
2317	743586.46	457012.30	1042.310	1042.233	0.076	Urban
2318	743586.42	457006.39	1042.192	1042.009	0.183	Urban
2319	743586.37	457001.46	1042.085	1041.932	0.153	Urban
2320	743586.67	456996.73	1042.005	1041.933	0.073	Urban
2321	743586.76	456990.07	1041.949	1041.801	0.148	Urban
2322	743623.56	457040.95	1042.296	1042.377	-0.082	Low Grass
2323	743624.12	457046.47	1042.278	1042.303	-0.025	Low Grass
2324	743624.48	457051.26	1042.408	1042.385	0.024	Low Grass
2325	743624.66	457056.55	1042.314	1042.453	-0.139	Low Grass
2326	743624.73	457061.76	1042.228	1042.263	-0.035	Low Grass
2327	743630.38	457061.37	1042.203	1042.254	-0.052	Low Grass
2328	743630.43	457055.75	1042.369	1042.467	-0.098	Low Grass
2329	743630.39	457050.77	1042.379	1042.440	-0.061	Low Grass
2330	743630.45	457046.29	1042.319	1042.360	-0.041	Low Grass
2331	743630.37	457040.46	1042.142	1042.302	-0.159	Low Grass
2332	743637.03	457040.59	1042.283	1042.300	-0.017	Low Grass
2333	743637.07	457046.43	1042.342	1042.354	-0.011	Low Grass
2334	743637.14	457051.68	1042.344	1042.470	-0.125	Low Grass
2335	743637.30	457056.79	1042.350	1042.418	-0.067	Low Grass
2336	743637.49	457061.45	1042.288	1042.357	-0.069	Low Grass
2337	743643.36	457061.80	1042.241	1042.367	-0.126	Low Grass
2338	743643.57	457056.21	1042.472	1042.487	-0.015	Low Grass
2339	743643.53	457051.11	1042.427	1042.509	-0.083	Low Grass
2340	743643.19	457045.90	1042.227	1042.366	-0.140	Low Grass
2341	743643.28	457040.52	1042.289	1042.330	-0.041	Low Grass
2342	743649.99	457040.68	1042.268	1042.381	-0.113	Low Grass
2343	743650.12	457046.39	1042.358	1042.364	-0.007	Low Grass
2344	743650.17	457051.39	1042.259	1042.344	-0.085	Low Grass
2345	743650.08	457056.02	1042.602	1042.471	0.131	Low Grass
2346	743649.81	457061.15	1042.425	1042.438	-0.013	Low Grass
2347	743649.98	457065.48	1042.134	1042.313	-0.178	Low Grass
2348	743571.21	457092.83	1040.067	1040.047	0.020	Low Trees
2349	743571.39	457098.21	1039.576	1039.729	-0.153	Low Trees
2350	743570.47	457103.24	1039.377	1039.541	-0.163	Low Trees
2351	743570.17	457108.65	1039.304	1039.494	-0.191	Low Trees



<i>Number</i>	<i>Easting</i>	<i>Northing</i>	<i>Known Z</i>	<i>Laser Z</i>	<i>Delta Z</i>	<i>Landcover Type</i>
2352	743569.72	457114.32	1039.199	1039.422	-0.223	Low Trees
2353	743574.83	457114.31	1039.489	1039.794	-0.305	Low Trees
2354	743576.04	457110.19	1039.482	1039.805	-0.323	Low Trees
2355	743576.49	457105.24	1039.683	1039.771	-0.088	Low Trees
2356	743577.21	457101.02	1039.852	1039.889	-0.037	Low Trees
2357	743577.99	457096.38	1040.041	1040.100	-0.059	Low Trees
2358	743582.64	457095.67	1040.103	1040.137	-0.034	Low Trees
2359	743582.03	457100.91	1039.924	1039.979	-0.054	Low Trees
2360	743581.64	457106.19	1039.848	1039.924	-0.076	Low Trees
2361	743581.65	457111.15	1039.883	1040.070	-0.186	Low Trees
2362	743581.77	457115.67	1039.773	1040.079	-0.307	Low Trees
2363	743582.11	457119.14	1039.701	1039.927	-0.226	Low Trees
2364	743586.88	457118.73	1039.822	1040.020	-0.198	Low Trees
2365	743586.84	457113.74	1039.914	1040.168	-0.254	Low Trees
2366	743587.45	457108.36	1039.996	1040.062	-0.067	Low Trees
2367	743587.05	457102.22	1039.829	1039.936	-0.107	Low Trees
2368	743587.33	457097.90	1040.035	1040.039	-0.003	Low Trees
2369	743592.30	457097.56	1040.042	1039.989	0.053	Low Trees
2370	743592.49	457102.76	1039.850	1039.929	-0.080	Low Trees
2371	743592.89	457108.55	1039.998	1040.072	-0.074	Low Trees
2372	743593.07	457113.94	1039.895	1040.068	-0.173	Low Trees
2373	743593.65	457118.34	1039.812	1040.120	-0.309	Low Trees
2374	743594.13	457121.73	1039.822	1040.057	-0.234	Low Trees
2375	743706.53	457214.68	1039.109	1039.196	-0.087	Tall Trees
2376	743706.33	457220.23	1039.100	1039.045	0.055	Tall Trees
2377	743706.14	457225.46	1039.289	1039.172	0.117	Tall Trees
2378	743704.20	457230.92	1039.282	1039.304	-0.022	Tall Trees
2379	743704.55	457236.65	1039.618	1039.629	-0.011	Tall Trees
2380	743705.74	457242.29	1039.136	1039.341	-0.204	Tall Trees
2381	743711.98	457241.62	1039.057	1039.106	-0.049	Tall Trees
2382	743711.54	457236.36	1039.150	1039.290	-0.140	Tall Trees
2383	743713.31	457231.85	1039.074	1039.204	-0.130	Tall Trees
2384	743712.80	457225.48	1039.121	1039.194	-0.073	Tall Trees
2385	743712.78	457219.38	1039.181	1039.018	0.163	Tall Trees
2386	743717.78	457219.49	1039.293	1039.098	0.195	Tall Trees
2387	743717.35	457225.87	1038.975	1039.077	-0.102	Tall Trees
2388	743717.64	457232.06	1038.948	1038.993	-0.046	Tall Trees
2389	743717.31	457237.47	1039.098	1039.137	-0.039	Tall Trees
2390	743718.41	457242.73	1038.945	1039.060	-0.116	Tall Trees
2391	743719.13	457247.63	1038.964	1038.947	0.018	Tall Trees
2392	743724.23	457247.50	1038.913	1038.940	-0.027	Tall Trees
2393	743725.44	457241.68	1039.101	1039.050	0.051	Tall Trees
2394	743724.60	457237.29	1039.111	1039.223	-0.112	Tall Trees
2395	743721.94	457230.71	1039.044	1039.051	-0.007	Tall Trees



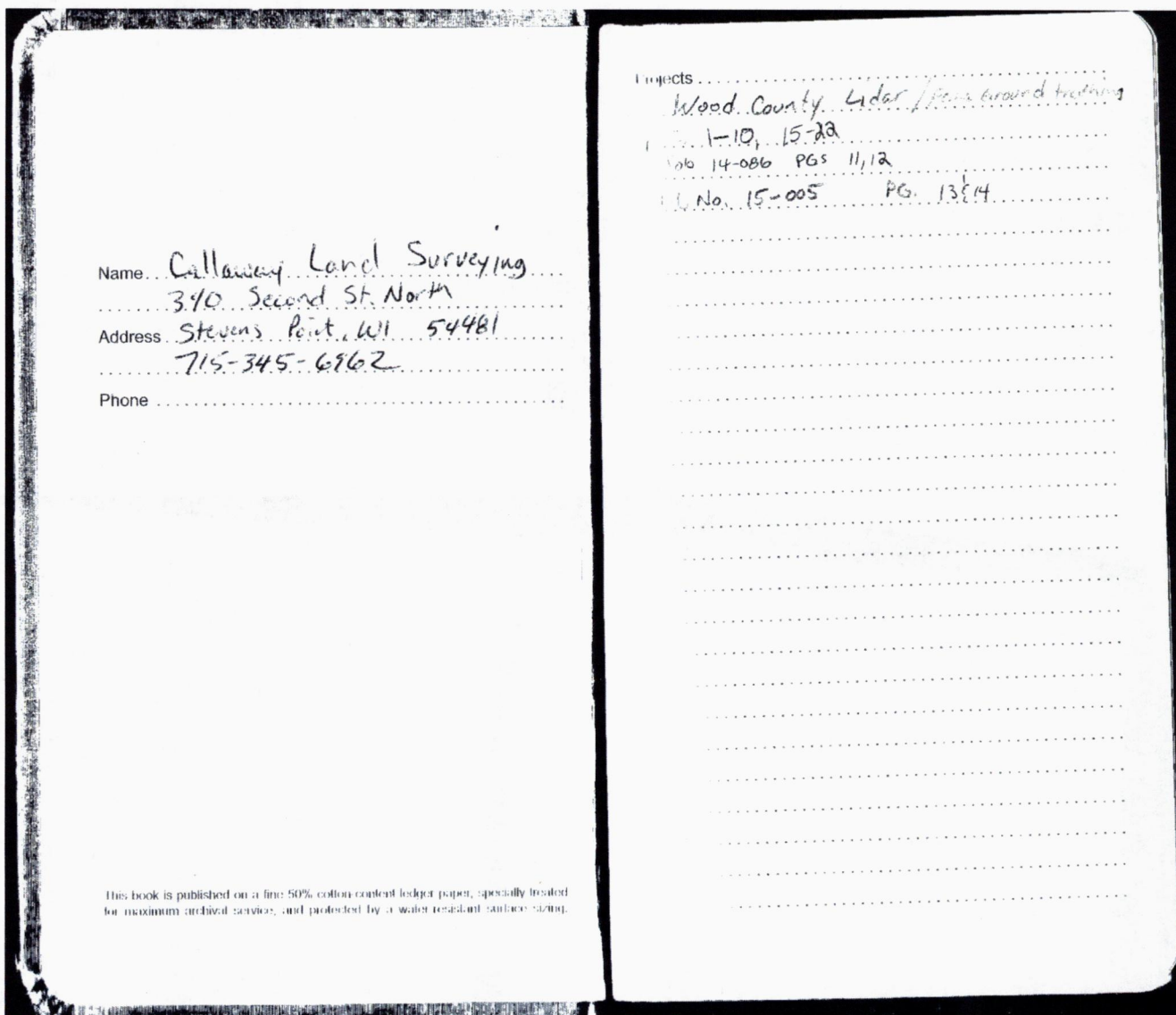
<i>Number</i>	<i>Easting</i>	<i>Northing</i>	<i>Known Z</i>	<i>Laser Z</i>	<i>Delta Z</i>	<i>Landcover Type</i>
2396	743720.47	457224.79	1039.136	1039.078	0.058	Tall Trees
2397	743721.24	457219.07	1039.205	1039.089	0.116	Tall Trees
2398	743726.83	457219.73	1038.947	1038.993	-0.046	Tall Trees
2399	743727.81	457225.20	1038.929	1038.774	0.154	Tall Trees
2400	743733.04	457241.59	1038.949	1039.146	-0.198	Tall Trees
2401	743730.03	457235.79	1038.789	1039.306	-0.517	Tall Trees



## Field Notes

Project FEMA ground survey notes

- Contains point number and descriptions
- Includes Control and Check Points not included in statistical analysis





①

10/30/14

Sokia GPS

Partly Cloudy

10:40 AM

intersection of U and 73

end of fog line @ curb intersect

David Calling

point 117

②

10/30/14

Sokia GPS

Cloudy

intersection of Crimson leaf trailer homes

corner of sidewalk

David Calling

point 118

③

10/30/14

Sokia GPS

Partly Cloudy

12:00 pm

intersection of east and HH

corner of sidewalk

David Calling

point 120

④

10/30/14

Sokia GPS

Partly Cloudy

1:54 pm

intersection of D and entry Line RD

end of fog line

David Calling

point 119



⑤ 11/3/2014  
PID No.

Shot 100 corner of concrete curb  
" " 101 End of fog line  
" " 107 " "  
Shot 108 End of fog line  
Shot 109 " "

**NEW DAY!**

Shot 110 Line Rd & center line  
Shot 111 Base of PWR Pole

Jackson County

Kelly C.  
overcast 41°F Calm  
Hb: 14-073  
AVRES PID  
Kia GPS  
ESCORP

11/7/2014

overcast 30°  
AVRES PID  
Kia GPS  
ESCORP

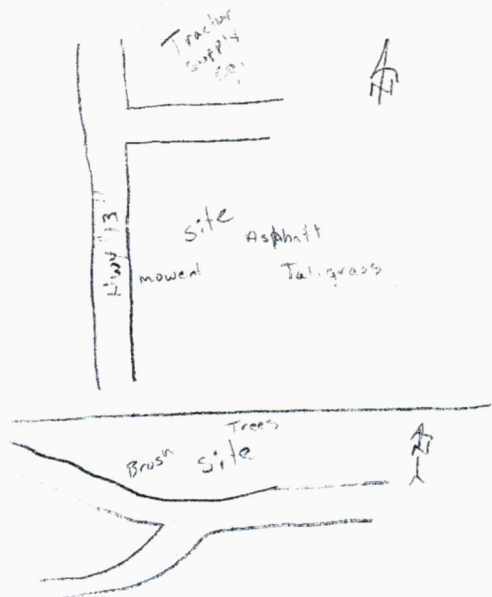
12/18/2014

⑦ Wood County, Idaho  
Ground truthing  
AVRES FEM No. 5

Shots: 1000 - ~~1034~~ 1035 Asphalt  
1026 - 1031 Grass/weed unmowed  
1072 - 1107 brush, stumps  
1108 - 1149 brush  
1150 - 1182 Trees

Photo 1 Asphalt  
" 2 Weeds/Tall grass  
" 3 mowed grass  
" 4 Trees  
" 5 Brush  
" 6 PID 118 Cor. Con. Walk

40 overcast  
Kelly C.  
Kia 2700 ISX  
ESCORP  
Wood County, Idaho



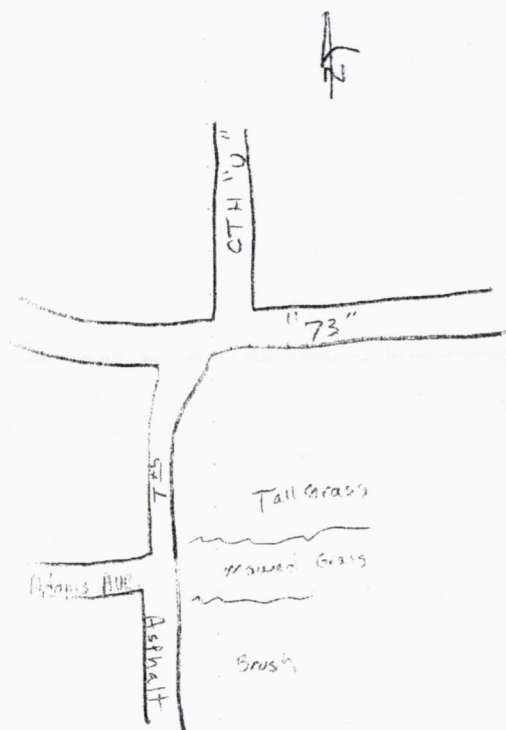


⑨ 12/10/2011  
wood county Lidar  
Ground truthing  
~~A~~ Ayres Eema No. 8

Shots: 1182 - 1203 Asphalt  
1210 - 1216 mowed grass  
1247 - 1273 Tall grass  
1274 - 1301 Brush  
1302 - 1326 Trees

Photos 7 Asphalt  
" " 8 mowed grass  
" " 9 Tall grass  
" " 10 Brush  
" " 11 Trees  
" " 12 PID No 17

⑩ 240 overcast  
Kelly C  
2001 Kia 2001 SX  
2000s  
wood county Corords





(15) 14-073 (Wood County)

Fema 2

PNTS

- 1327-1357 Mowed Grass Photo 1 ✓
- 1352-1375 Gravel Photo 2 ✓
- 1376-1404 Weeds Photo 3 ✓
- 1405-1432 Brush Photo 4 ✓
- 1433-1457 Corn (unmowed Grass) Photo 5 ✓

121 PID No. 121 (Highway) Photo 6 ✓

Fema 9

PNTS

- 1458-1482 Asphalt (Seal Coat) Photo 7 ✓
- 1483-1507 Mowed Grass Photo 8 ✓
- 1508-1532 un mowed Grass Photo 9 ✓
- 1533-1558 Brush Photo 10 ✓
- 1559-1590 trees Photo 11 ✓

123 PID 123 (white turn lane line) Photo 12 ✓

(16)

40°F

New series  
 KKK 2700 15X  
 K. Callaway  
 T. Hudson  
 Weeds (Wood County)  
 Plant = Ca. 7'

{ 1508-1512 Wrong desc., }  
 (changed in D.C.)



(17)

14-073 cont.

Fema 1

PNTS

1591-1615	Asphalt	Photo 13/44
1616-1640	Unmowed Grass	15
1641-1664	Trees	16
1665-1695	Mowed Grass	17
1696-1720	Brush	18

122	PID-122	End of Fog Line	19
120	PID-120	Corner of Sidewalk	20

Fema 3

1721-1745	<del>Grass</del> Gravel	21
1746-1770	Grass	22
1771-1775	Brush <del>WOODS</del>	23
1796-1820	Unmowed Grass	24
1821	Tree	/
1822 & 1823	Mag Nails	
T@1822	HI = 5.25	
B3@1823	HA = 4.86	
Check	0.0000' HD = 0.003 VD = 0.028	
1824-1847	Trees	25

119	PID-119	End of Fog Line	26
-----	---------	-----------------	----



(19)

14-073 Wood County  
Fema 7

PNTS Photos

1848-1878	Grass (mowed)	27	✓
1879-1910	Grass (un mowed)	28	✓
1911-1938	Asphalt	29	✓
1939-1964	Brush	30	✓
1965-1992	Trees	31	✓

116 PID 116 End of Line 32 ✓  
E-mix 4

1993-2022	Asphalt	33
2023- <del>2050</del> 2050	Grass	34
2051-2076	unmowed Grass	35
2077-2104	Trees	36
2105-2135	Small Trees/Brush	37

115 PID 115 End of Line 38  
Reset Photo count!

3/21/2015  
340  
Year  
1,61  
KRM 2700 ISX  
IS Cors  
Road Co. Systems

(21)

3/21/2015  
Fema 6

PNTS Photo

2136-2165	Asphalt	1
2166-2191	Brush	2
2192-2217	Marsh/In grass	3
2218-2248	mowed Grass	4
2249-2274	Trees	5

113 PID 113 crack @ fog line 6

New Day 3/24/2015  
14-073 Wood CTY ~~Wood~~  
Ground training

Points	Desc.	Photo
2275-2321	<del>Asph</del> Asphalt	7
2322-2347	Mowed Grass	8
2348-2374	Brush	9
2375-2401	Trees	10

(22)

14-073

recast  
150  
illy C  
1015  
KRM 2700 ISX

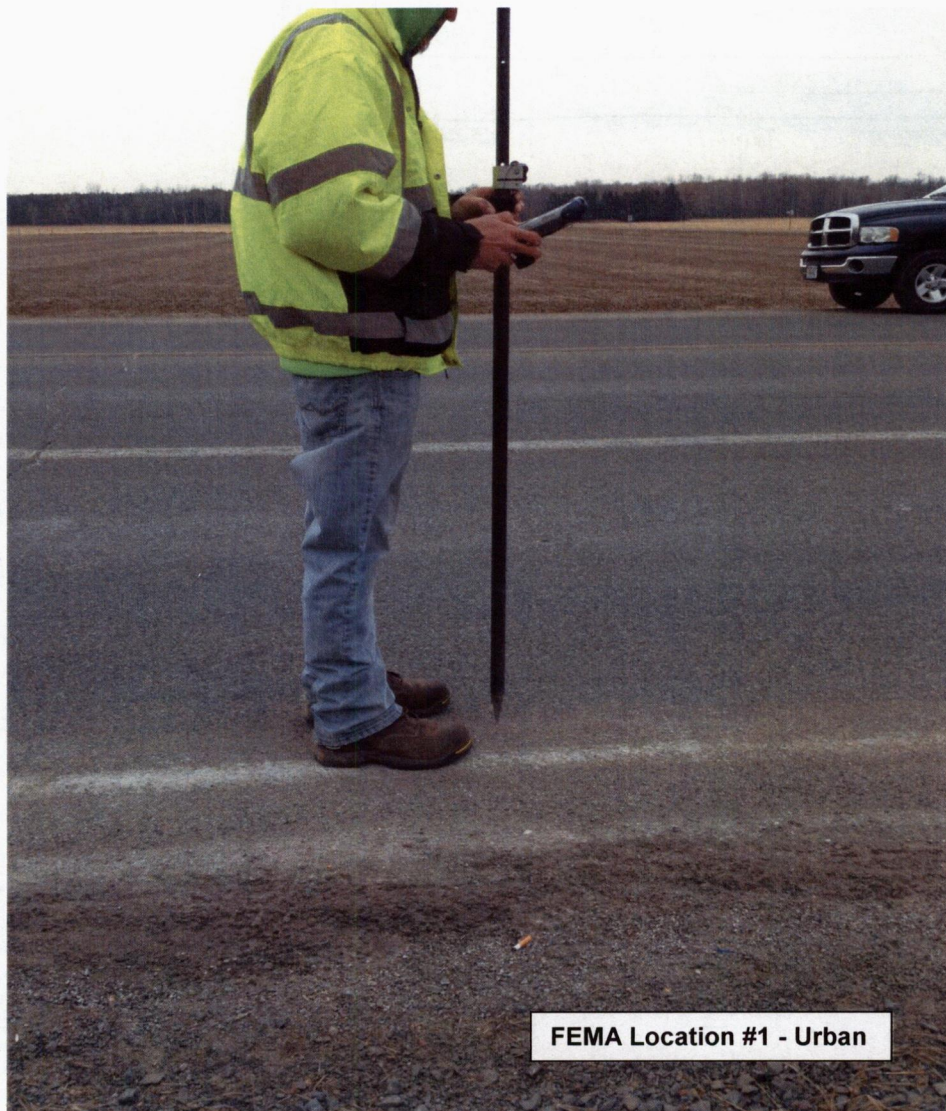
2700 ISX  
Utility Study  
(wood county)



## Field Photos

---

Identify land cover types present at each survey location



FEMA Location #1 - Urban





**FEMA Location #1 – Low Trees**



**FEMA Location #1 – Low Grass**





**FEMA Location #1 – Tall Trees**





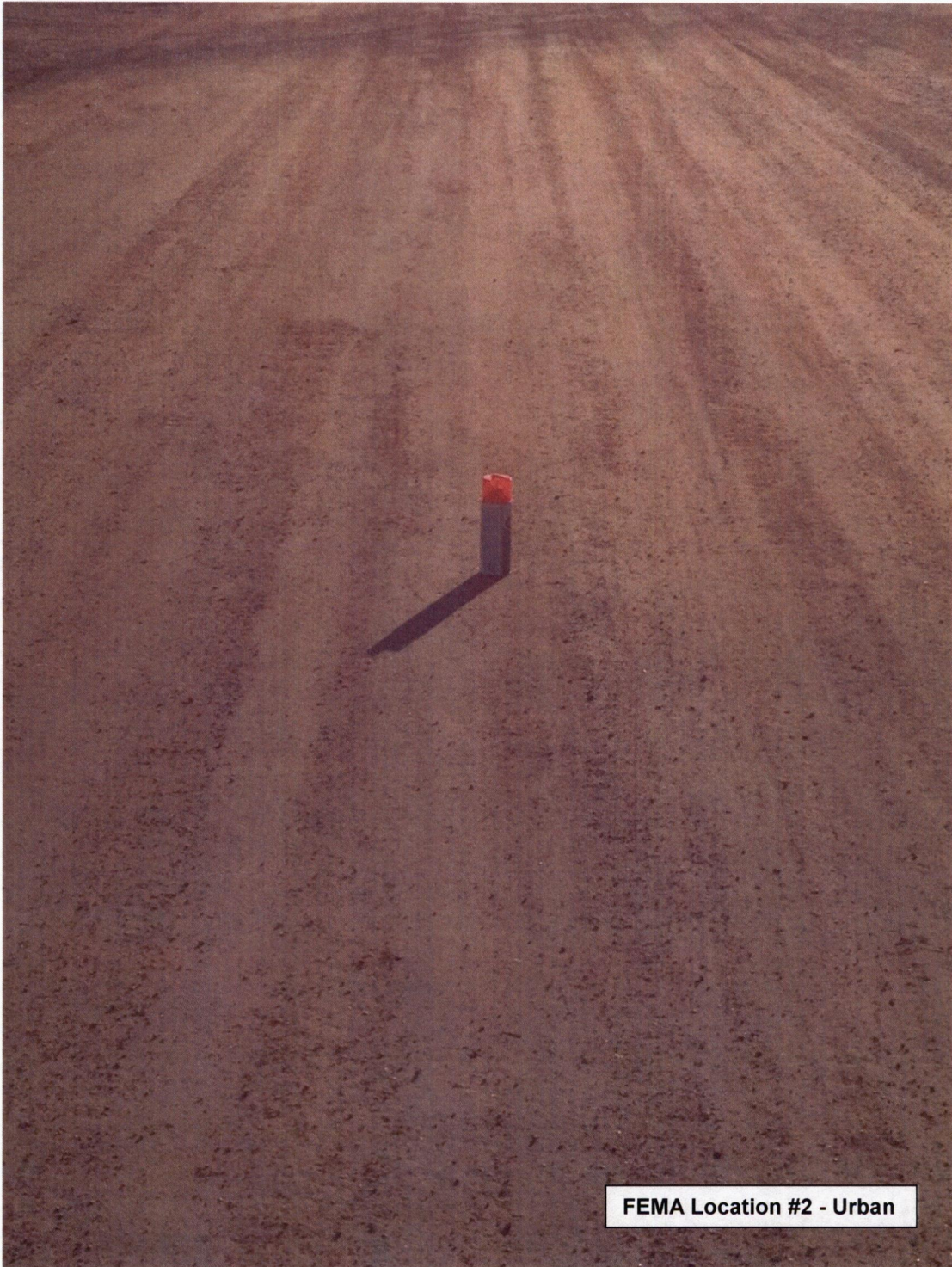
**FEMA Location #1 - Tall Grass**





FEMA Location #2 – Low Trees









FEMA Location #2 – Low Grass





FEMA Location #2 – Tall Grass





FEMA Location #2 – Tall Trees









**FEMA Location #3 – Low Grass**





FEMA Location #3 - Urban





FEMA Location #3 – Tall Trees





FEMA Location #3 – Tall Grass









**FEMA Location #4 - Low Grass**





**FEMA Location #4 – Tall Trees**









**FEMA Location #5 - Urban**





FEMA Location #5 – Low Trees





**FEMA Location #5 – Low Grass**





FEMA Location #5 - Tall Trees





FEMA Location #5 – Tall Grass





FEMA Location #6 – Urban





**FEMA Location #6 – Low Trees**





**FEMA Location #6 – Low Grass**





**FEMA Location #6 – Tall Grass**









FEMA Location #7 – Urban













**FEMA Location #7 – Tall Trees**





**FEMA Location #7 – Tall Grass**

















FEMA Location #9 – Urban





**FEMA Location #9 – Low Trees**





**FEMA Location #9 – Low Grass**





**FEMA Location #9 – Tall Trees**









FEMA Location #10 - Urban





**FEMA Location #10 – Low Trees**









**FEMA Location #10 – Tall Trees**