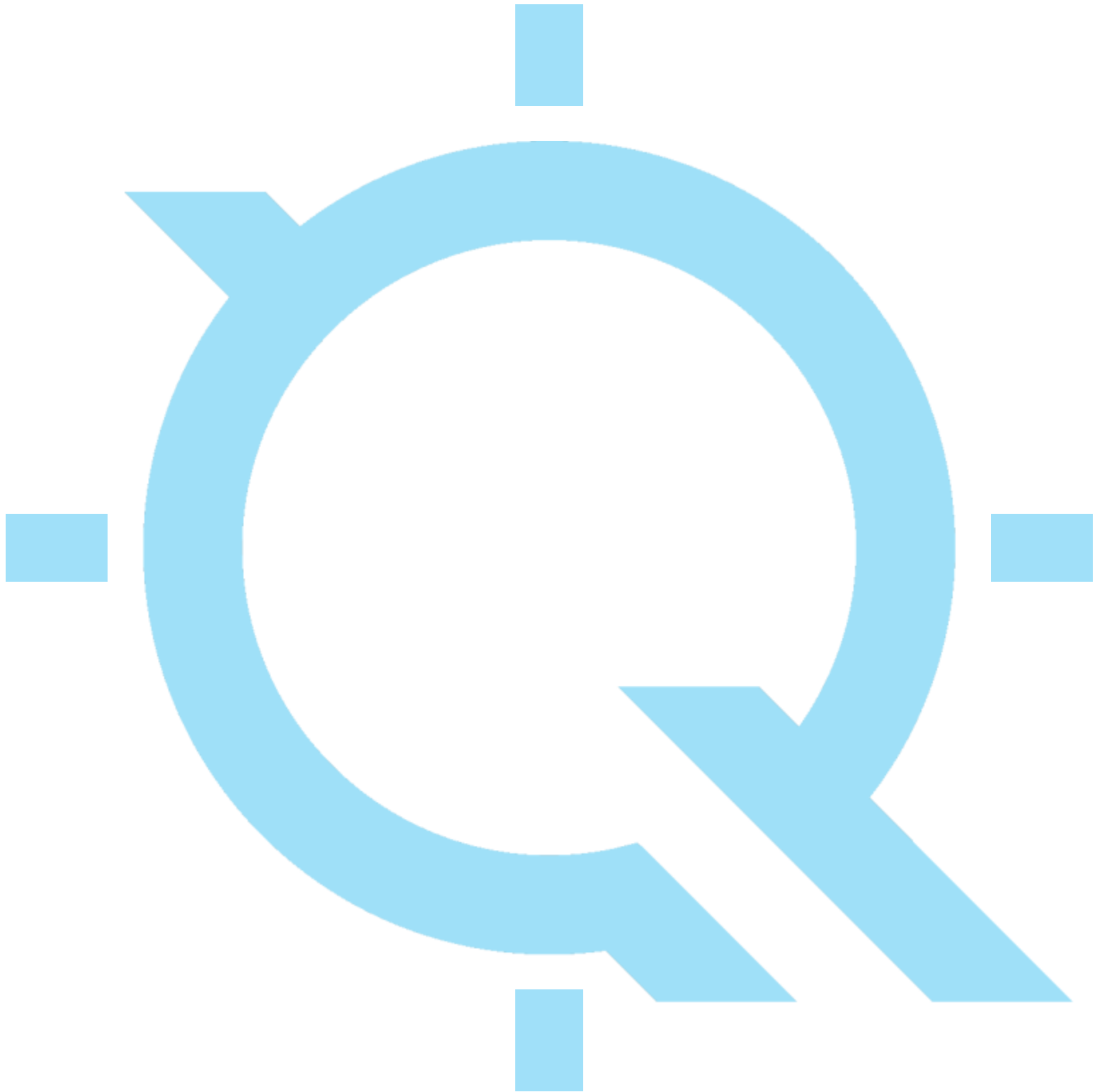


FOCUS on Accuracy



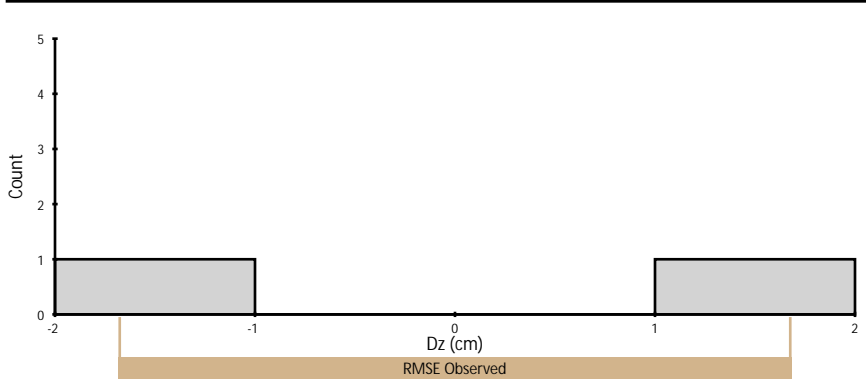
#140G0219F0026_Lot8_Oshkosh
LiDAR Accuracy Assessment

Table of Contents

Project Summary.....	1
Type Maps.....	2
Control Point Breakdown.....	3
Appendix - Individual Control Point Summaries.....	A1 - A8

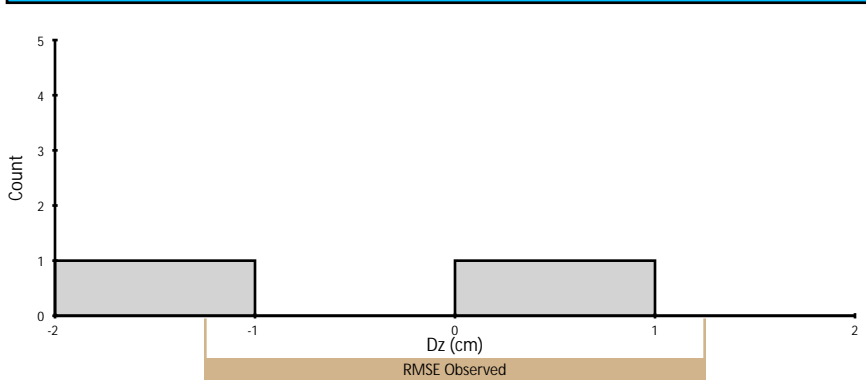
Project Summary

Nonvegetated Vertical Accuracy (Point Cloud)



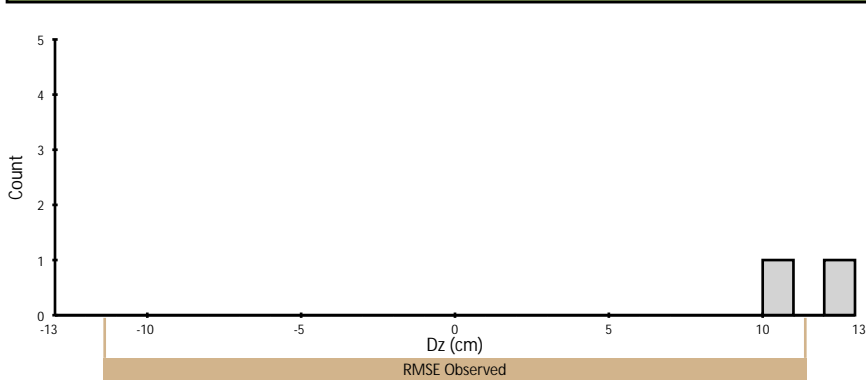
	Observed	Required
RMSE	1.68 cm	10.00 cm
95% Confidence Level	3.30 cm	19.60 cm
Mean	-0.20 cm	N/A
Count	2	N/A

Nonvegetated Vertical Accuracy (DEM)



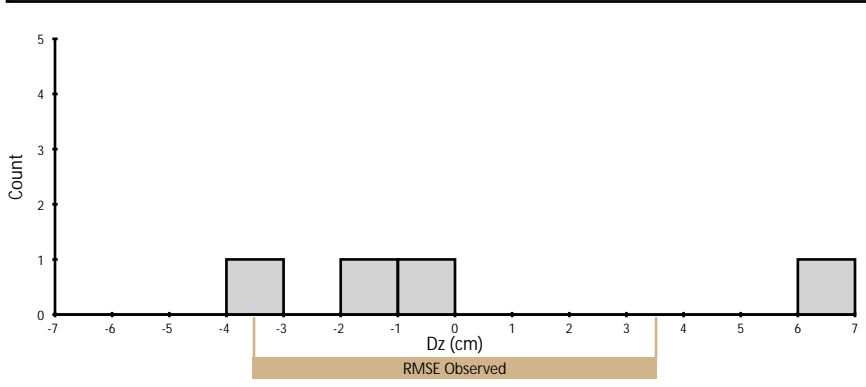
	Observed	Required
RMSE	1.25 cm	N/A
95% Confidence Level	2.46 cm	19.60 cm
Mean	-0.46 cm	N/A
Count	2	N/A

Vegetated Vertical Accuracy (DEM)



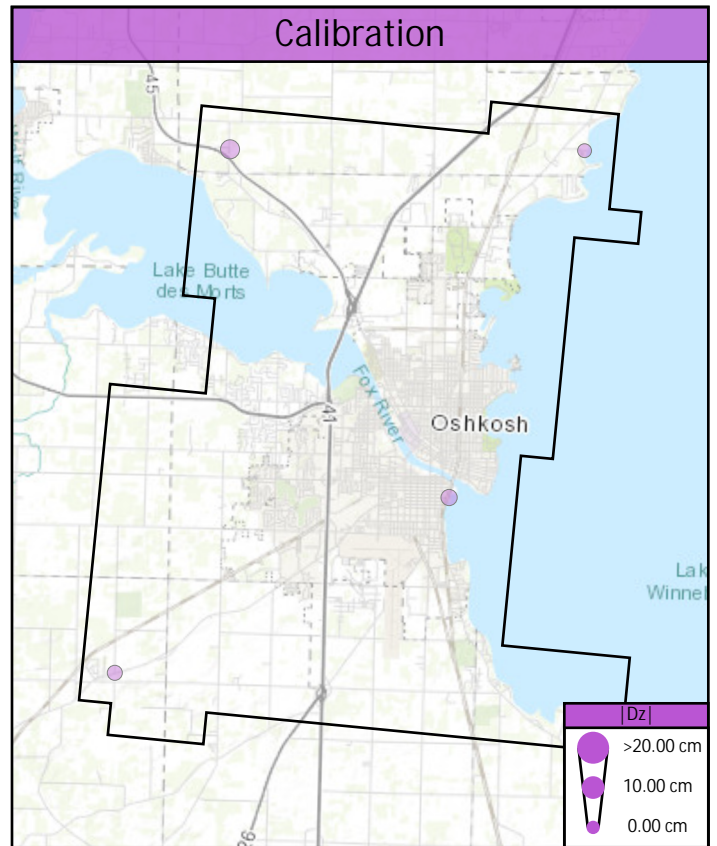
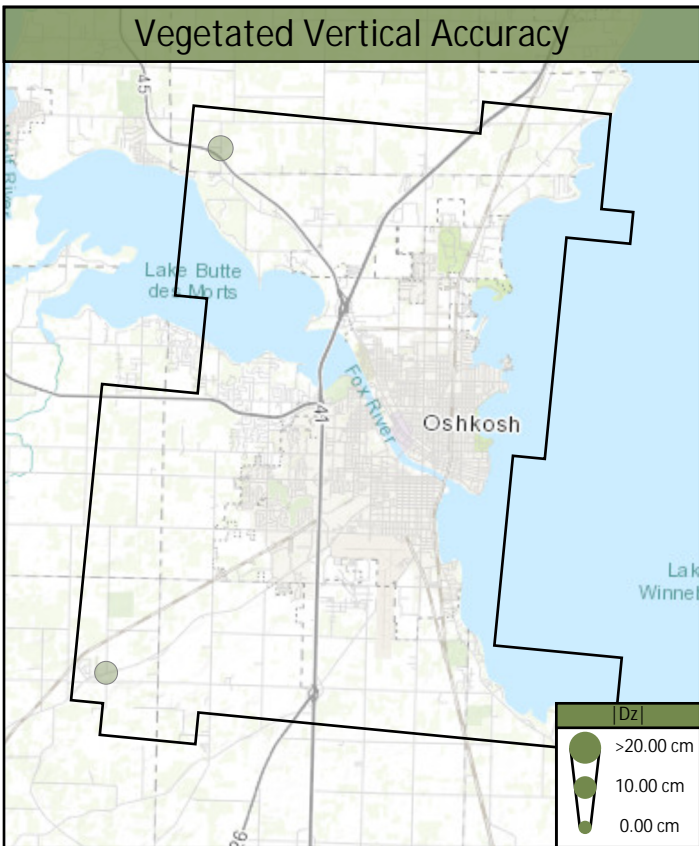
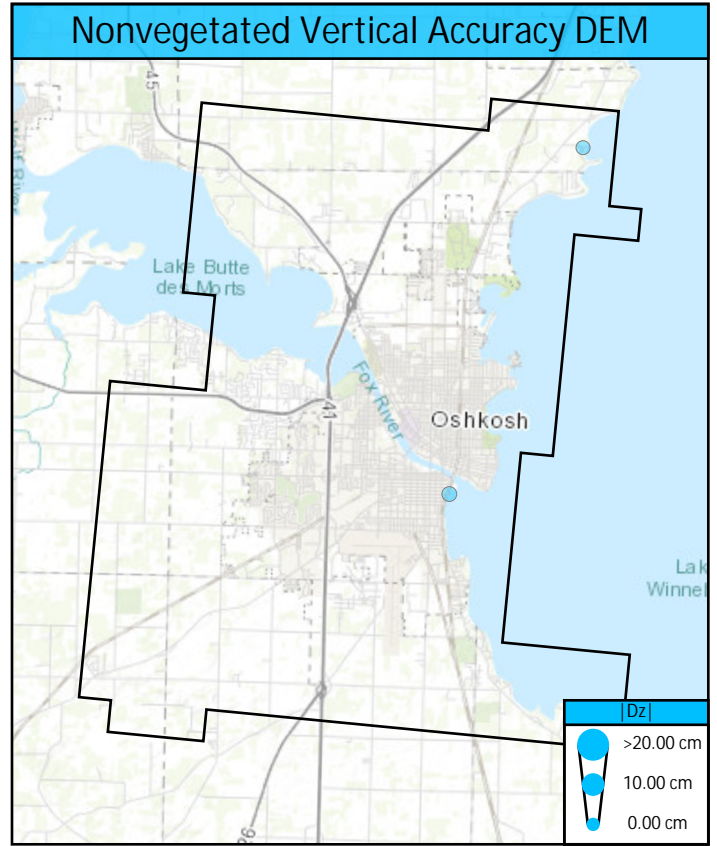
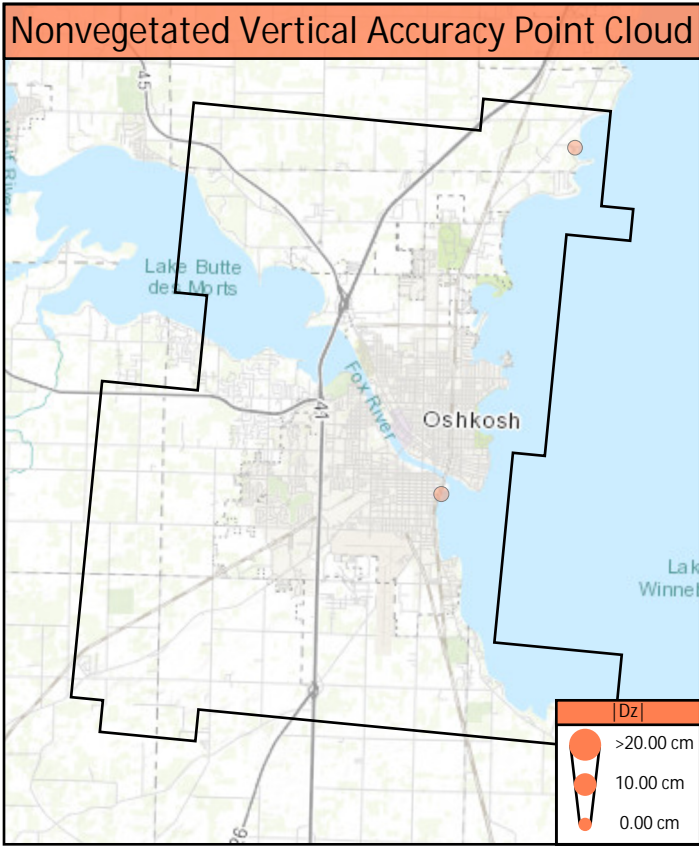
	Observed	Required
RMSE	11.43 cm	N/A
95th Percentile	12.42 cm	29.40 cm
Mean	11.37 cm	N/A
Count	2	N/A

Calibration (Point Cloud)



	Observed	Required
RMSE	3.54 cm	N/A
Mean	0.13 cm	N/A
Count	4	N/A

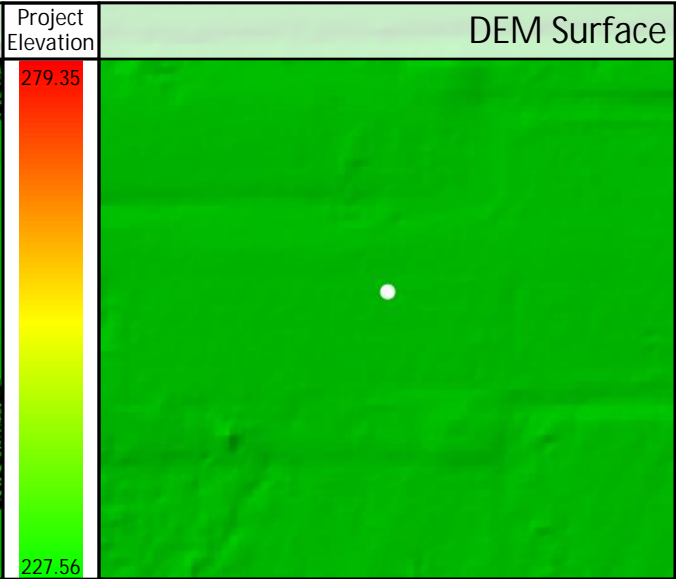
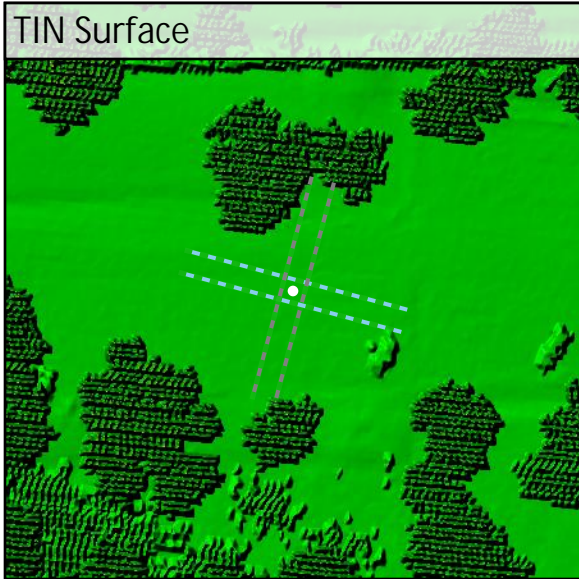
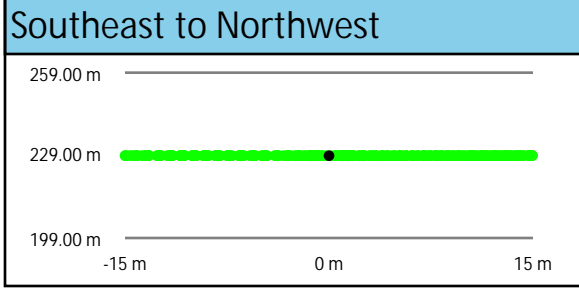
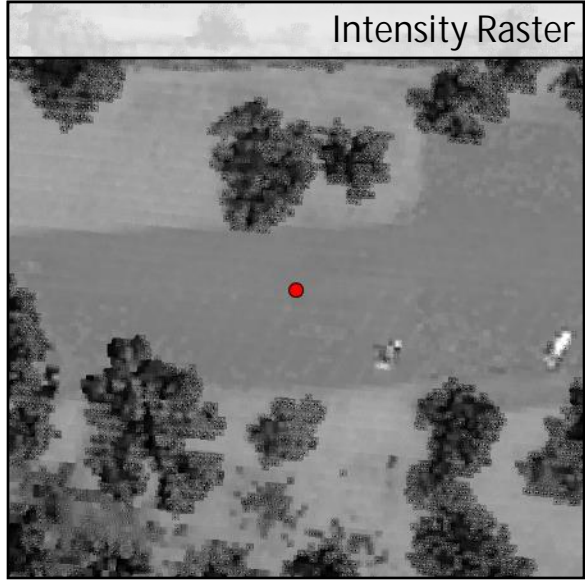
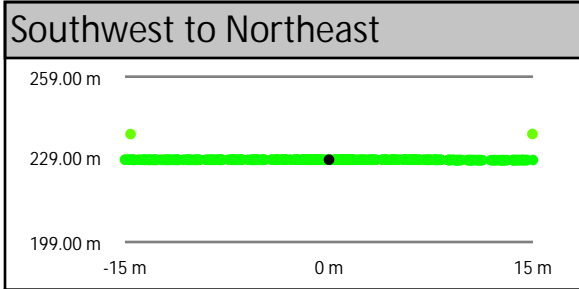
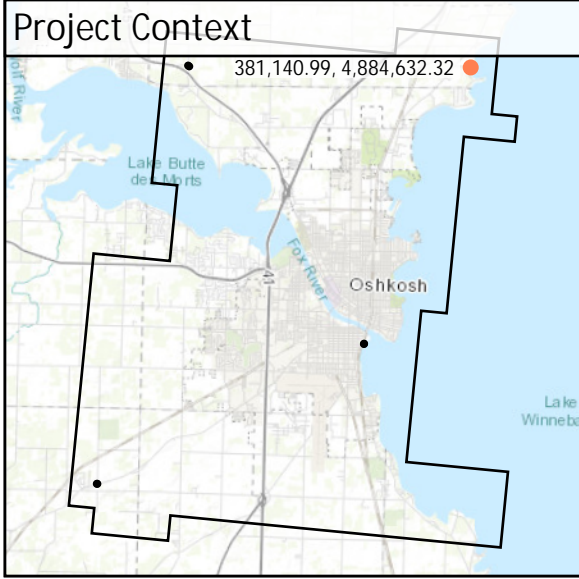
Control Point Locations



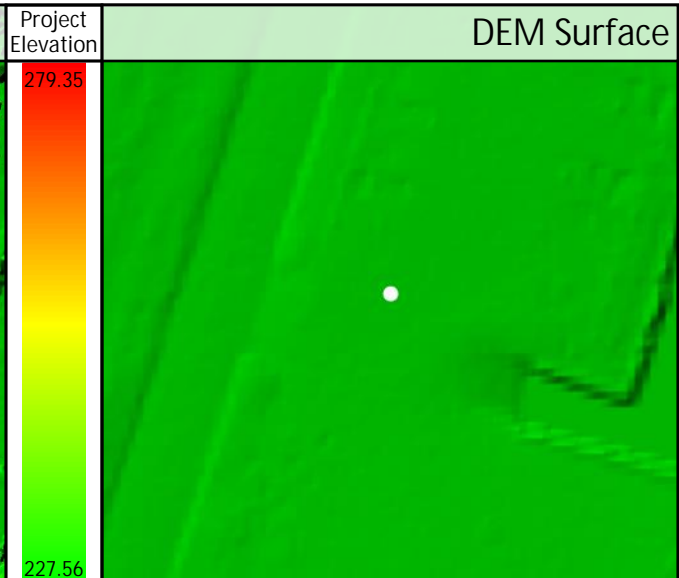
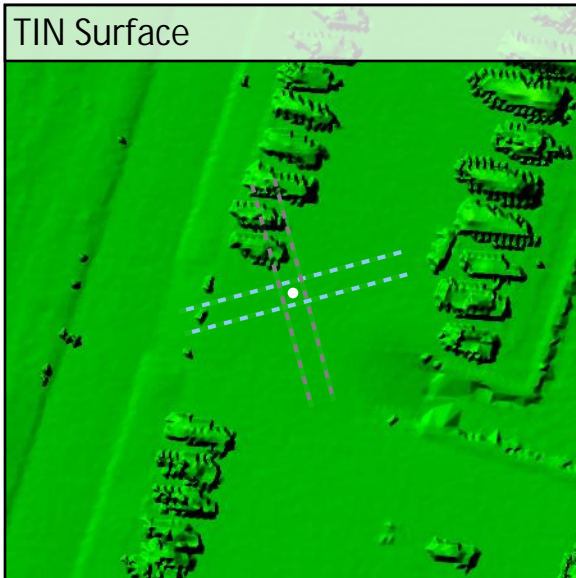
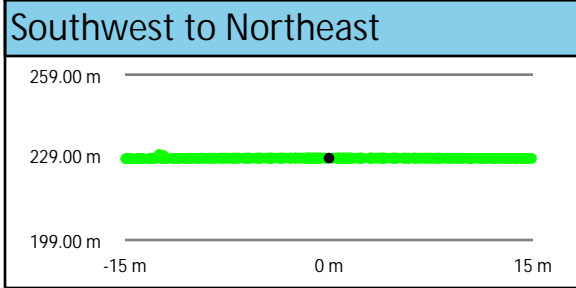
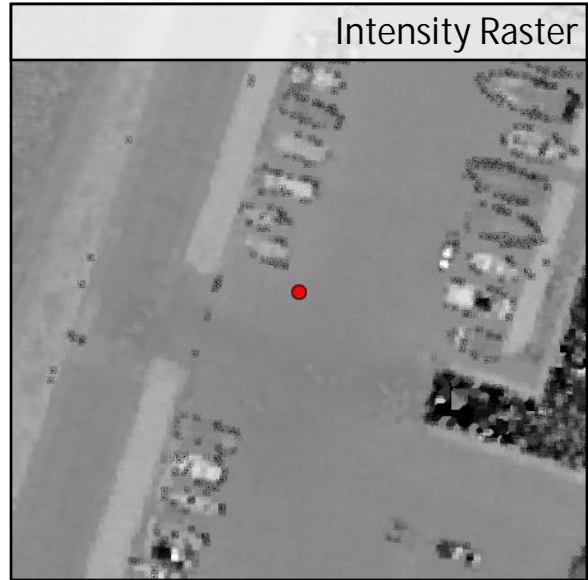
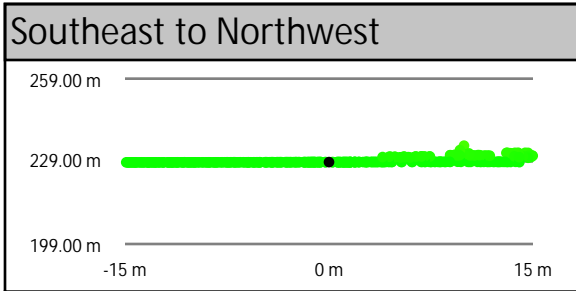
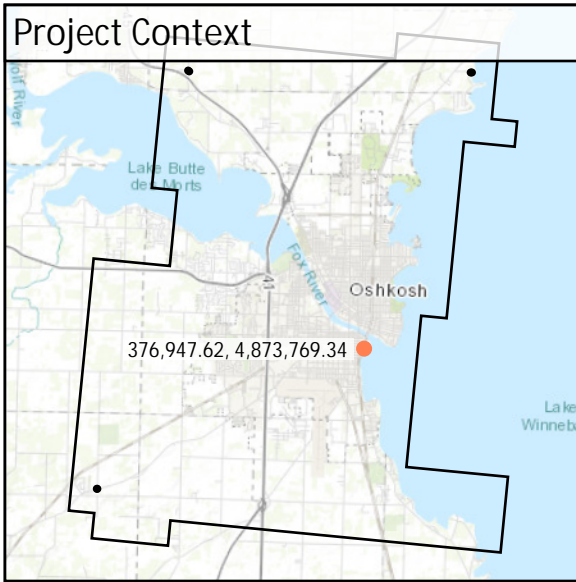
Control Point Breakdown

Point	Type	All Points TIN Dz	DEM Dz	Ground Density	Nearest Ground	Slope
UA37	NVA	1.47 cm	0.71 cm	2.79 ppsm	0.16 m	0.24°
UA38	NVA	-1.87 cm	-1.63 cm	3.15 ppsm	0.25 m	0.54°
TW46	VVA	N/A	12.53 cm	5.09 ppsm	0.11 m	0.53°
TW47	VVA	N/A	10.20 cm	5.06 ppsm	0.06 m	1.01°
CA101	CAL	6.07 cm	5.95 cm	4.88 ppsm	0.49 m	0.35°
CA102	CAL	-0.59 cm	-0.27 cm	2.83 ppsm	0.29 m	0.55°
CA103	CAL	-3.10 cm	-2.75 cm	2.97 ppsm	0.07 m	0.54°
CA104	CAL	-1.84 cm	-1.47 cm	5.09 ppsm	0.23 m	1.16°

UA37	Known Z	228.87 m	Point Density	2.79 ppsm
	DEM Dz	0.01 m	Ground Density	2.79 ppsm
	All Points TIN Dz	0.01 m	Slope	0.24 °



UA38	Known Z	228.72 m	Point Density	3.15 ppsm
	DEM Dz	-0.02 m	Ground Density	3.15 ppsm
	All Points TIN Dz	-0.02 m	Slope	0.54 °

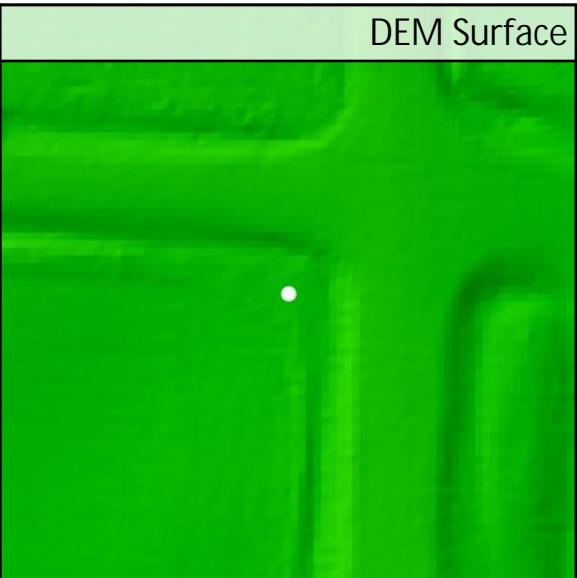
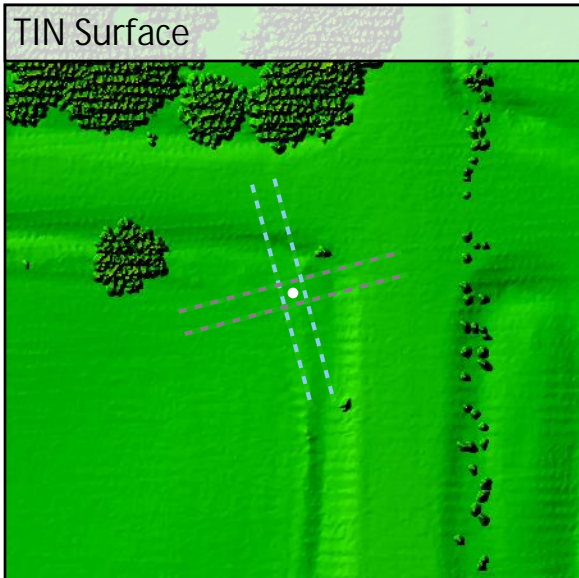
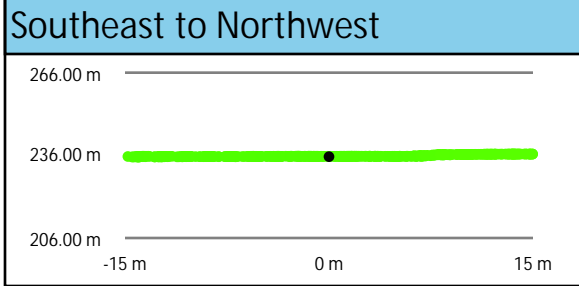
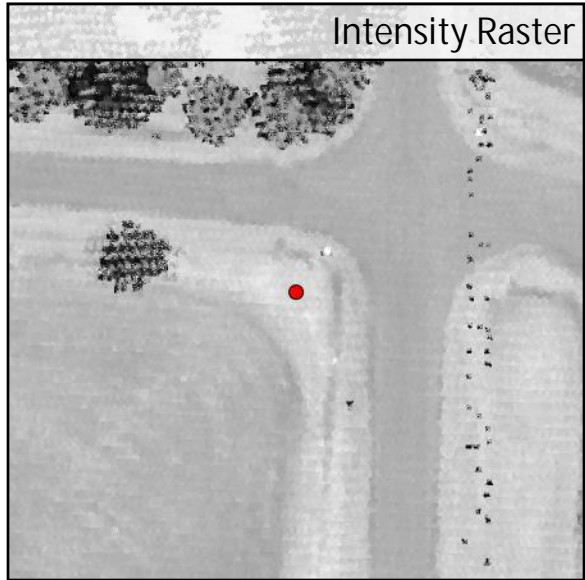
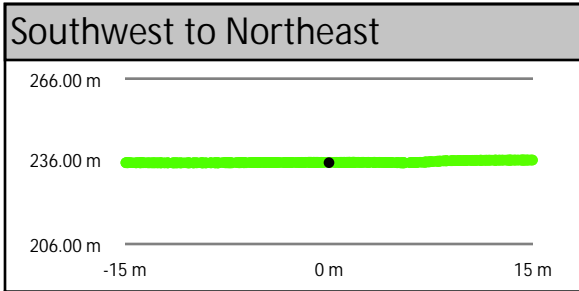
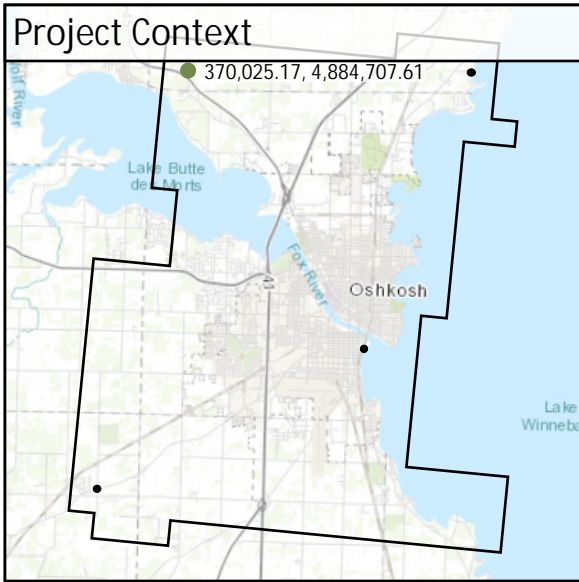


DEM Dz -0.02 m

NVA - UA38

All Points TIN Dz -0.02 m

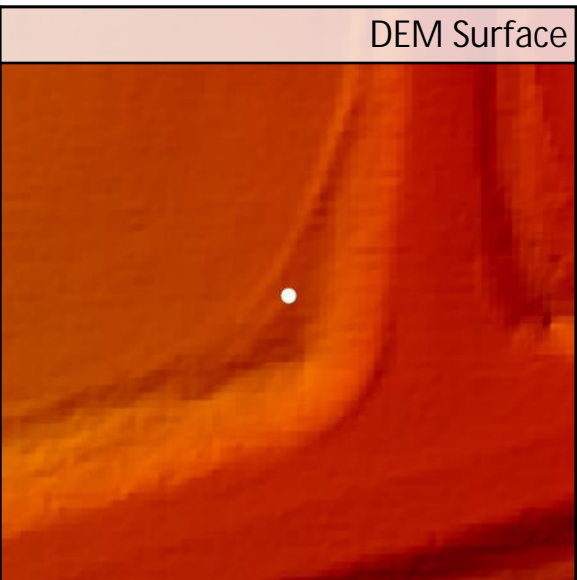
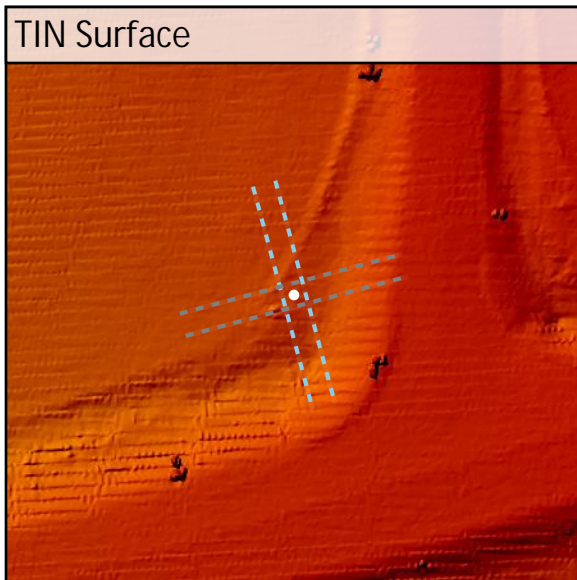
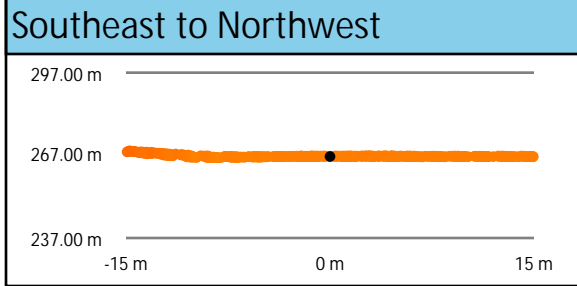
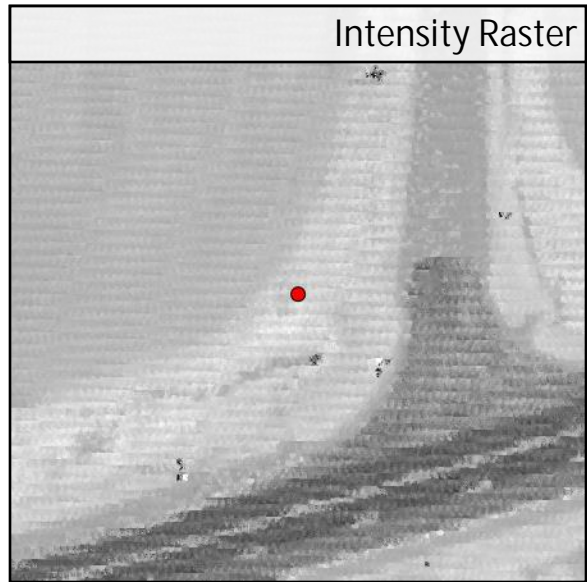
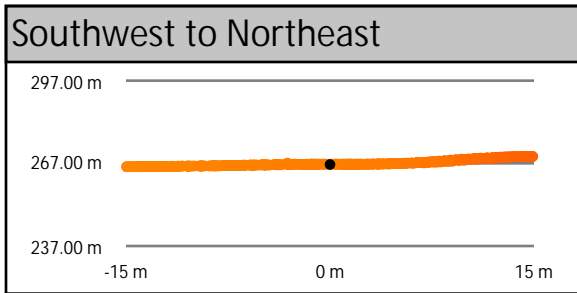
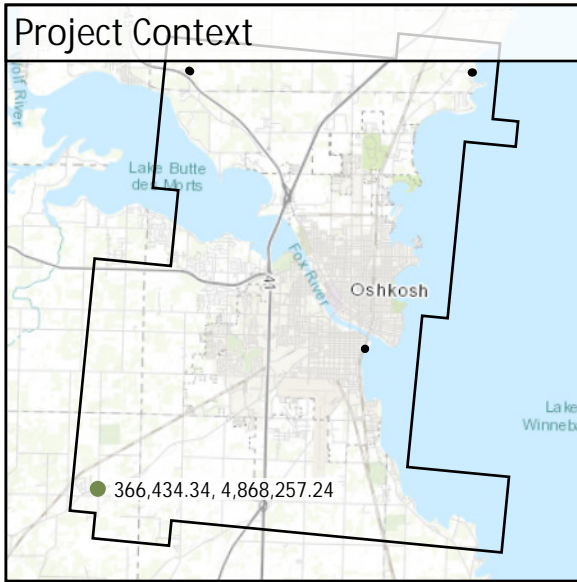
TW46	Known Z	235.52 m	Point Density	5.09 ppsm
	DEM Dz	0.13 m	Ground Density	5.09 ppsm
	All Points TIN Dz	N/A	Slope	0.53 °



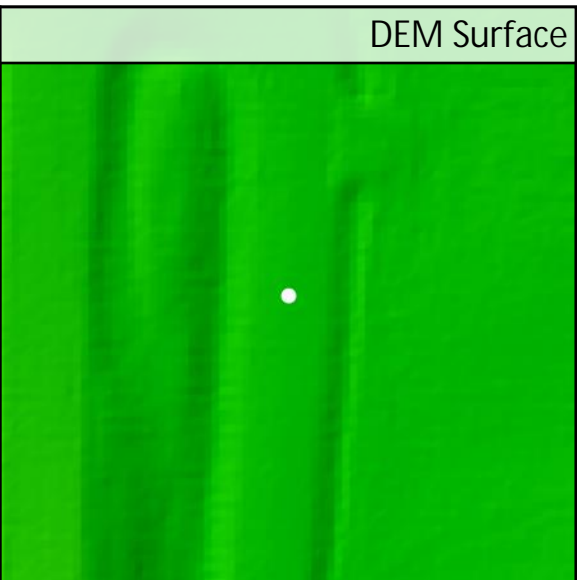
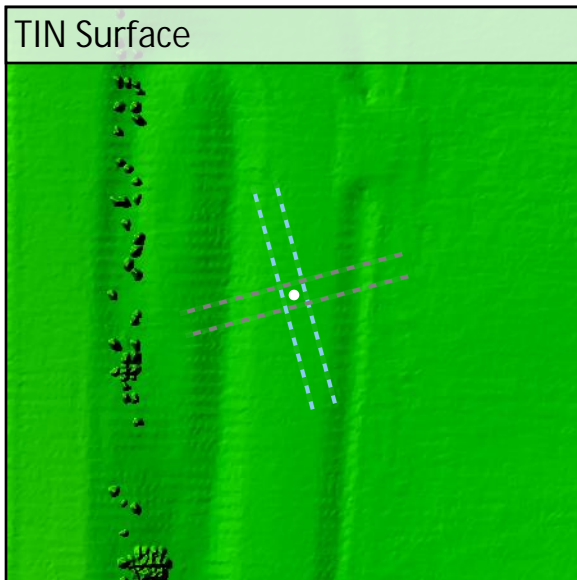
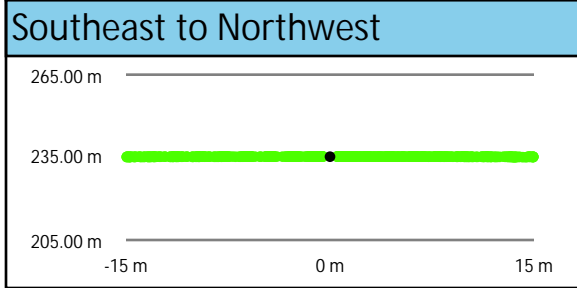
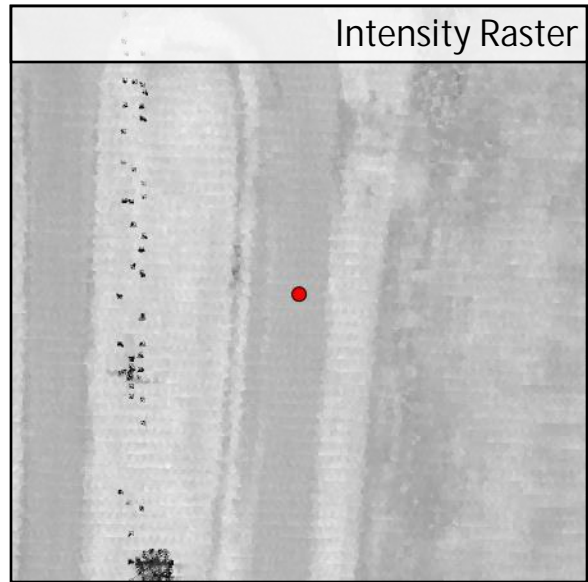
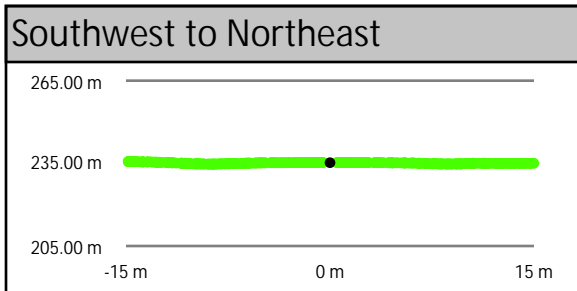
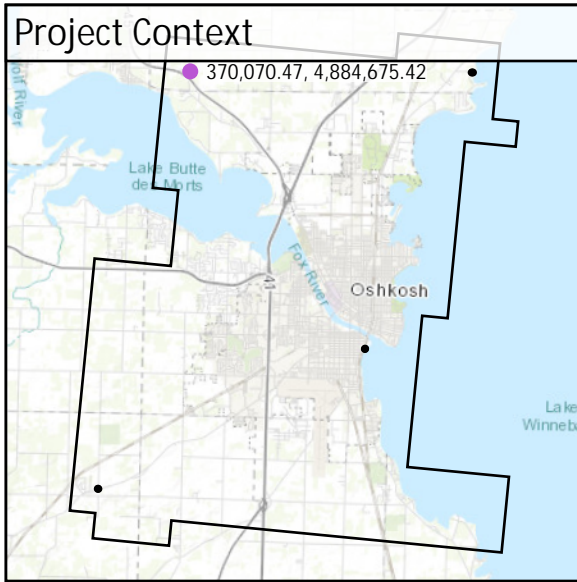
DEM Dz +0.13 m

VWA - TW46

TW47	Known Z	266.57 m	Point Density	5.06 ppsm
	DEM Dz	0.10 m	Ground Density	5.06 ppsm
	All Points TIN Dz	N/A	Slope	1.01 °



CA101	Known Z	235.23 m	Point Density	4.88 ppsm
	DEM Dz	0.06 m	Ground Density	4.88 ppsm
	All Points TIN Dz	0.06 m	Slope	0.35 °

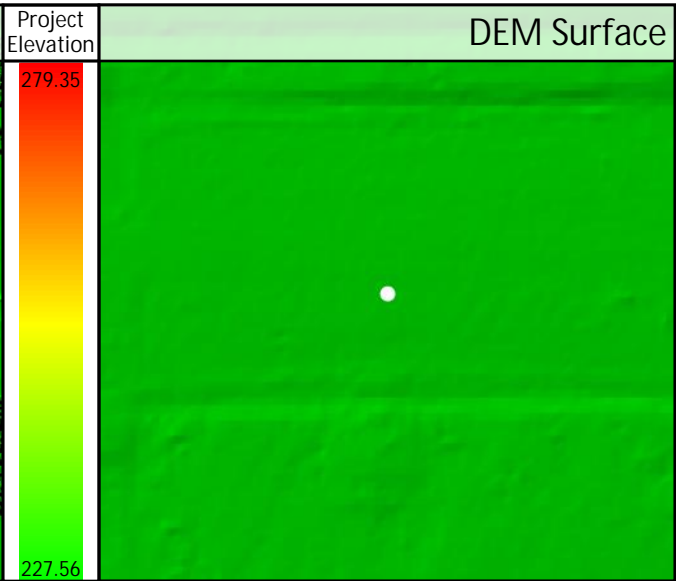
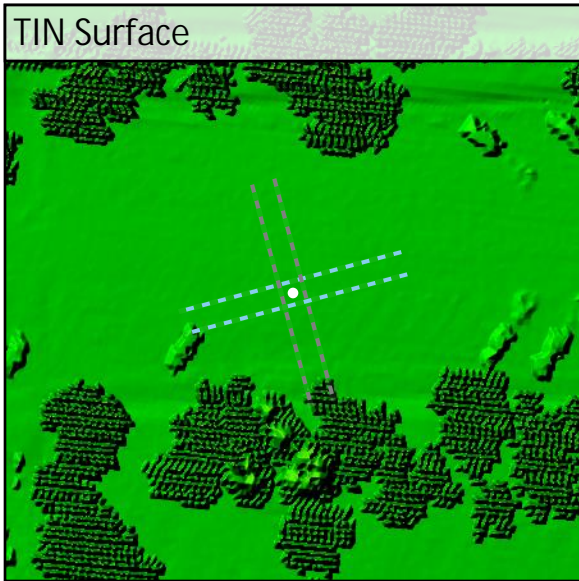
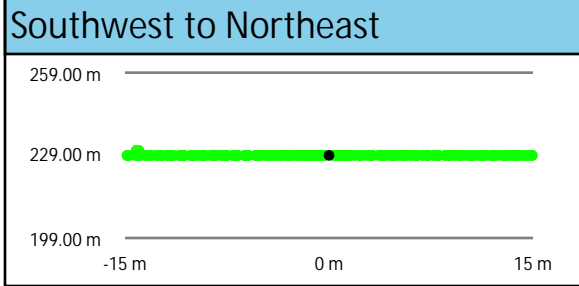
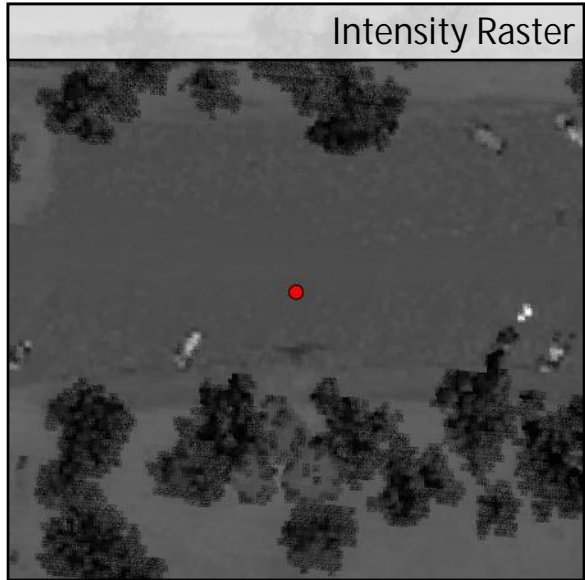
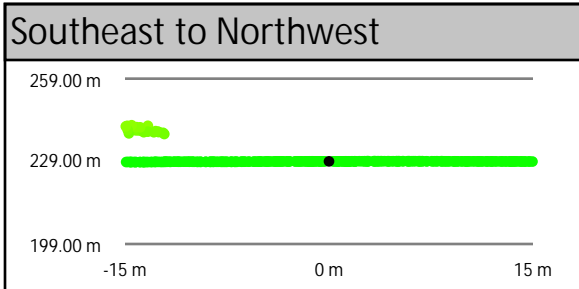
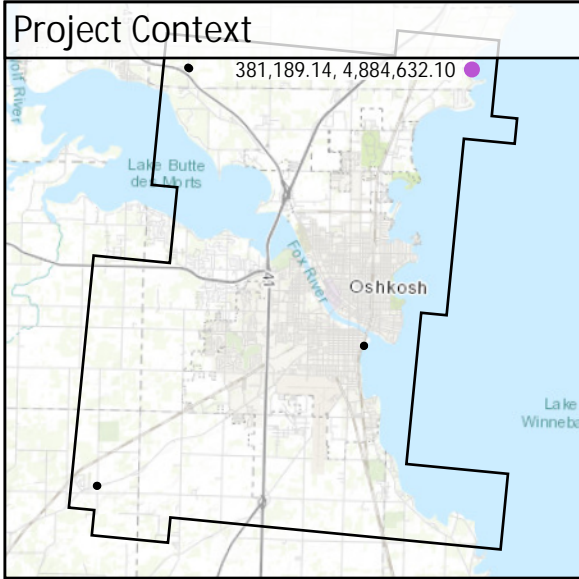


DEM Dz +0.06 m

CAL - CA101

All Points TIN Dz +0.06 m

CA102	Known Z	228.99 m	Point Density	2.83 ppsm
	DEM Dz	0.00 m	Ground Density	2.83 ppsm
	All Points TIN Dz	-0.01 m	Slope	0.55 °

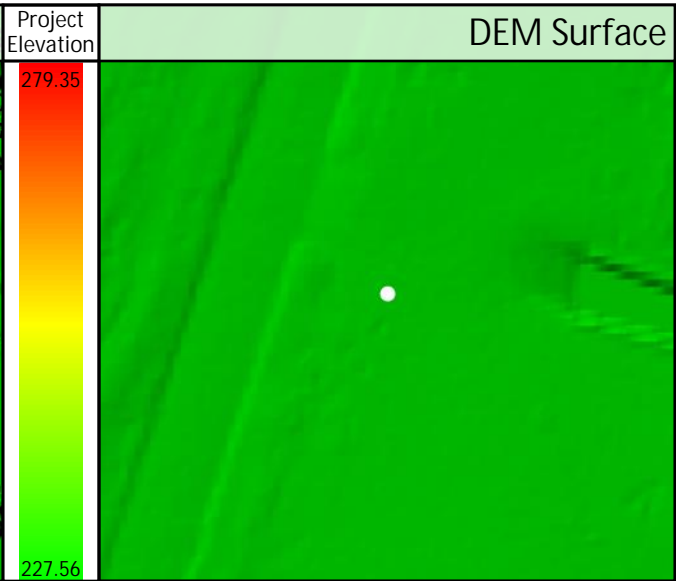
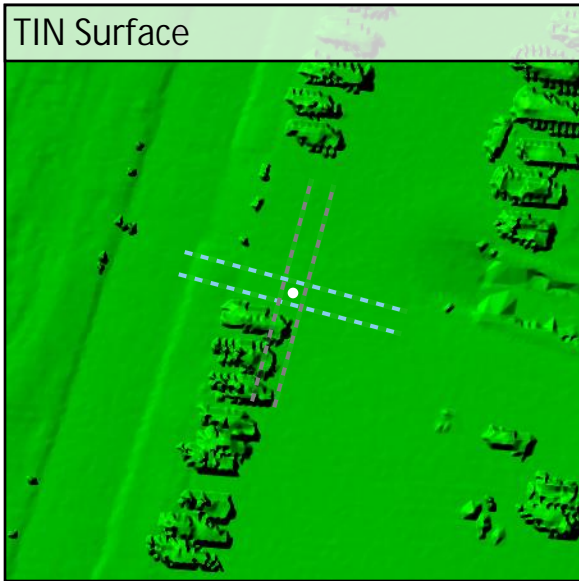
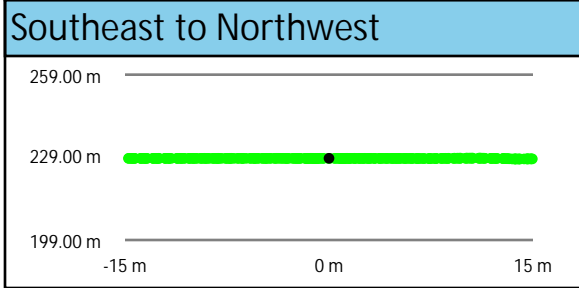
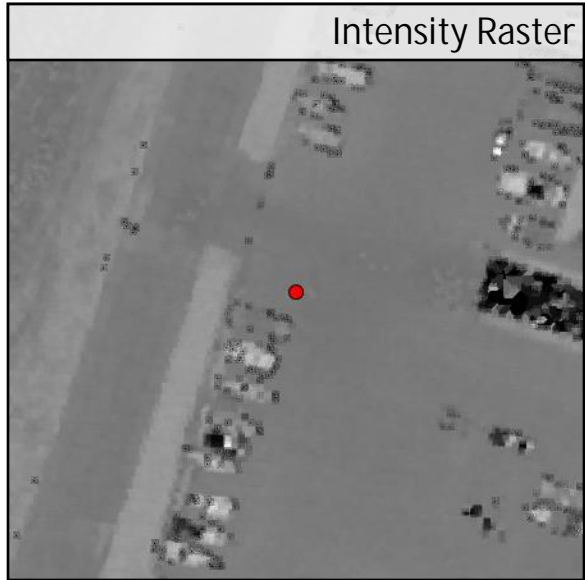
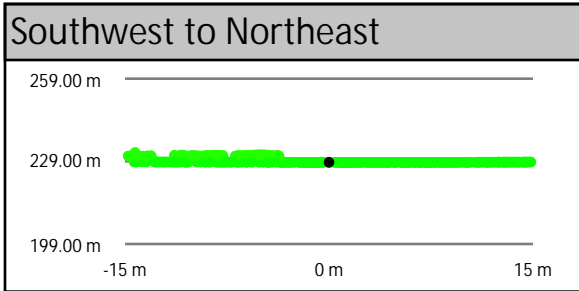
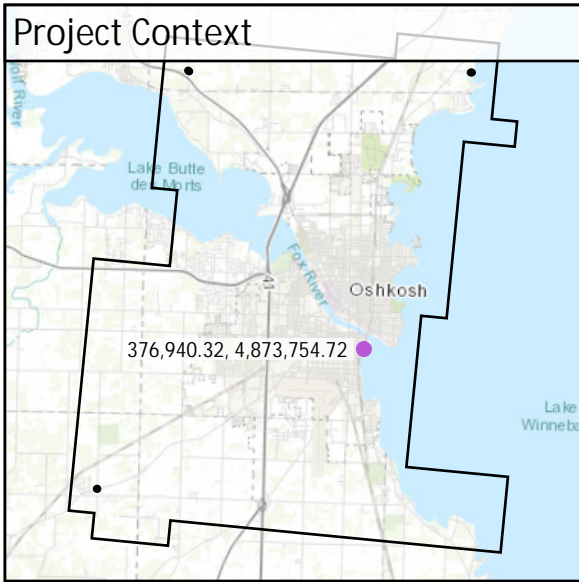


DEM Dz 0.00 m

CAL - CA102

All Points TIN Dz -0.01 m

CA103	Known Z	228.65 m	Point Density	2.97 ppsm
	DEM Dz	-0.03 m	Ground Density	2.97 ppsm
	All Points TIN Dz	-0.03 m	Slope	0.54 °



DEM Dz -0.03 m

CAL - CA103

All Points TIN Dz -0.03 m

CA104	Known Z	269.58 m	Point Density	5.09 ppsm
	DEM Dz	-0.01 m	Ground Density	5.09 ppsm
	All Points TIN Dz	-0.02 m	Slope	1.16 °

