

Classified Point Cloud

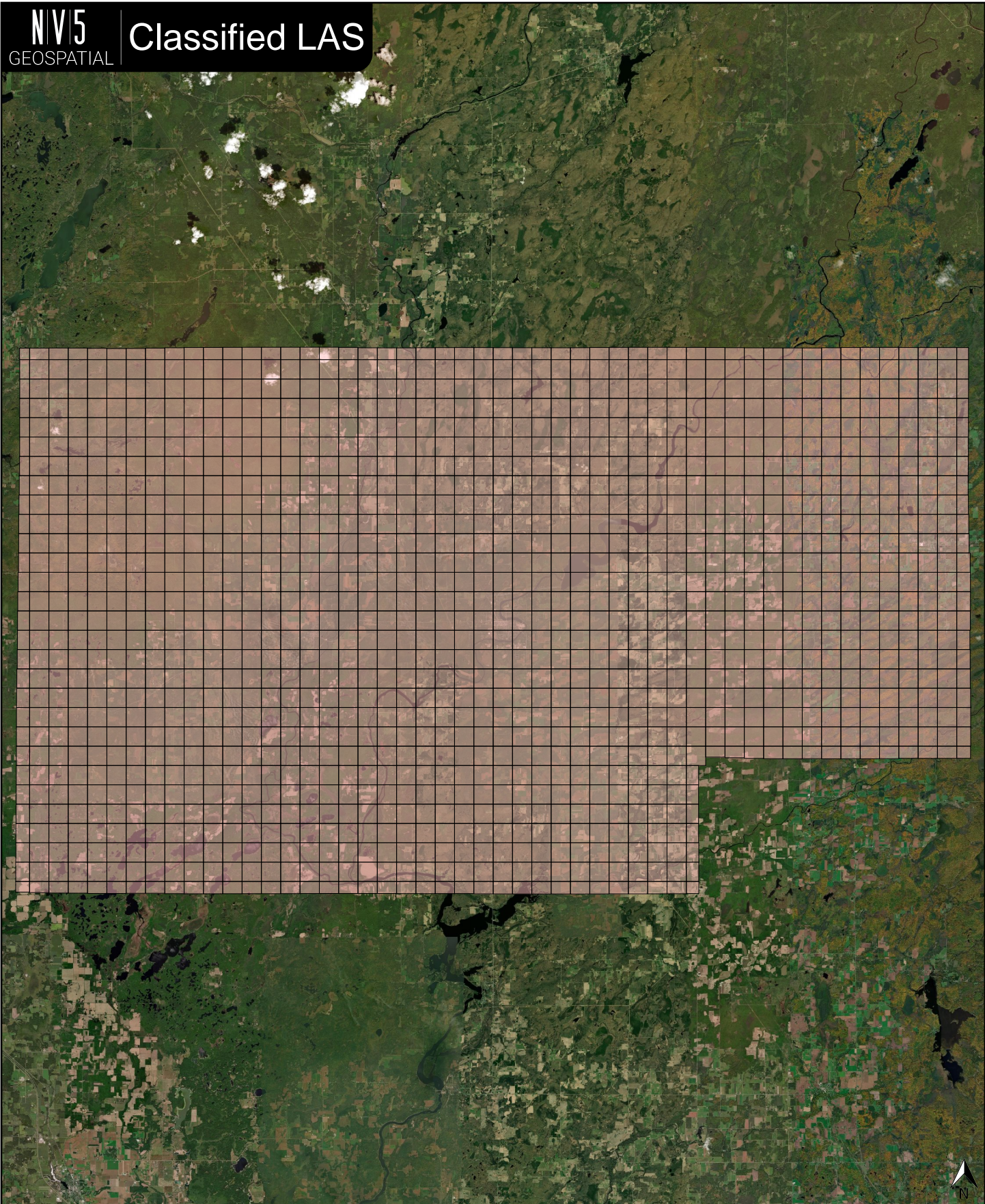
Deliverable 1 Summary

✓ General		
Folder:	G:\Rusk\point_cloud\tilecls	
Total # of Files:	1,352	(All Valid)
Total File Size:	397.2 GB	(426,493,218,914 bytes)
✓ Tile Sizes / Coordinate Ranges		
Median Tile Size:	4,500' x 4,500'	
Minimum Tile Size:	2,301' x 2,489'	
Maximum Tile Size:	4,500' x 4,500'	
X Range:	699588.95' to 922066.16'	
Y Range:	500041.48' to 627378.56'	
Elevation Range (All Classes):	-510.30' to 8632.79'	
✓ LAS Version And Point Record Formats		
v1.4, Point Record Format 6	1,352 of 1,352 Tiles	
✓ Spatial Reference System		
Horizontal Projection	NAD83(2011) / WISCRS Rusk (ftUS)	1,352 of 1,352 Tiles
Valid OGC Name	Yes	1,352 of 1,352 Tiles
Horizontal Datum	NAD83 (National Spatial Reference System 2011)	1,352 of 1,352 Tiles
Horizontal Units	US survey foot	1,352 of 1,352 Tiles
Vertical Datum	NAVD88 height (ftUS) - Geoid18 (ftUS)	1,352 of 1,352 Tiles
Vertical Units	US survey foot	1,352 of 1,352 Tiles
Vertical USGS-Compliant	Yes	1,352 of 1,352 Tiles
Geoid	Geoid18	1,352 of 1,352 Tiles
Storage Method	WKT	1,352 of 1,352 Tiles
Matches OGC Template	Yes	1,352 of 1,352 Tiles
✓ GPS Time Type		
Adjusted	1,352 of 1,352 Tiles	
✓ File Source ID Equals 0		
Yes	1,352 of 1,352 Tiles	
✓ VLR/EVLR Reserved Equals 0		
Yes	5,408 of 5,408 Records	
✓ Unnecessary Bytes At End Of File		
No	1,352 of 1,352 Tiles	
✓ Legacy Point Count Check		
Zero	1,352 of 1,352 Tiles	
✓ System Identifier		
MERGE	1,352 of 1,352 Tiles	

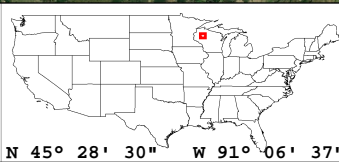
Classified Point Cloud Continued...

Deliverable 1 Summary

✓ Generating Software	
QSI LiDAR Suite	1,352 of 1,352 Tiles
✓ Scale Factors	
0.01, 0.01, 0.01	1,352 of 1,352 Tiles



Classified LAS Tiles (1,352)

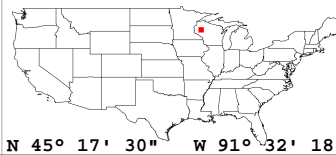
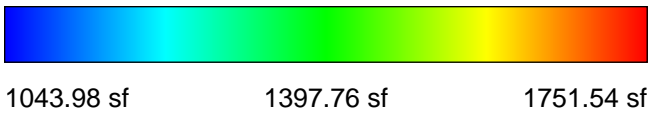
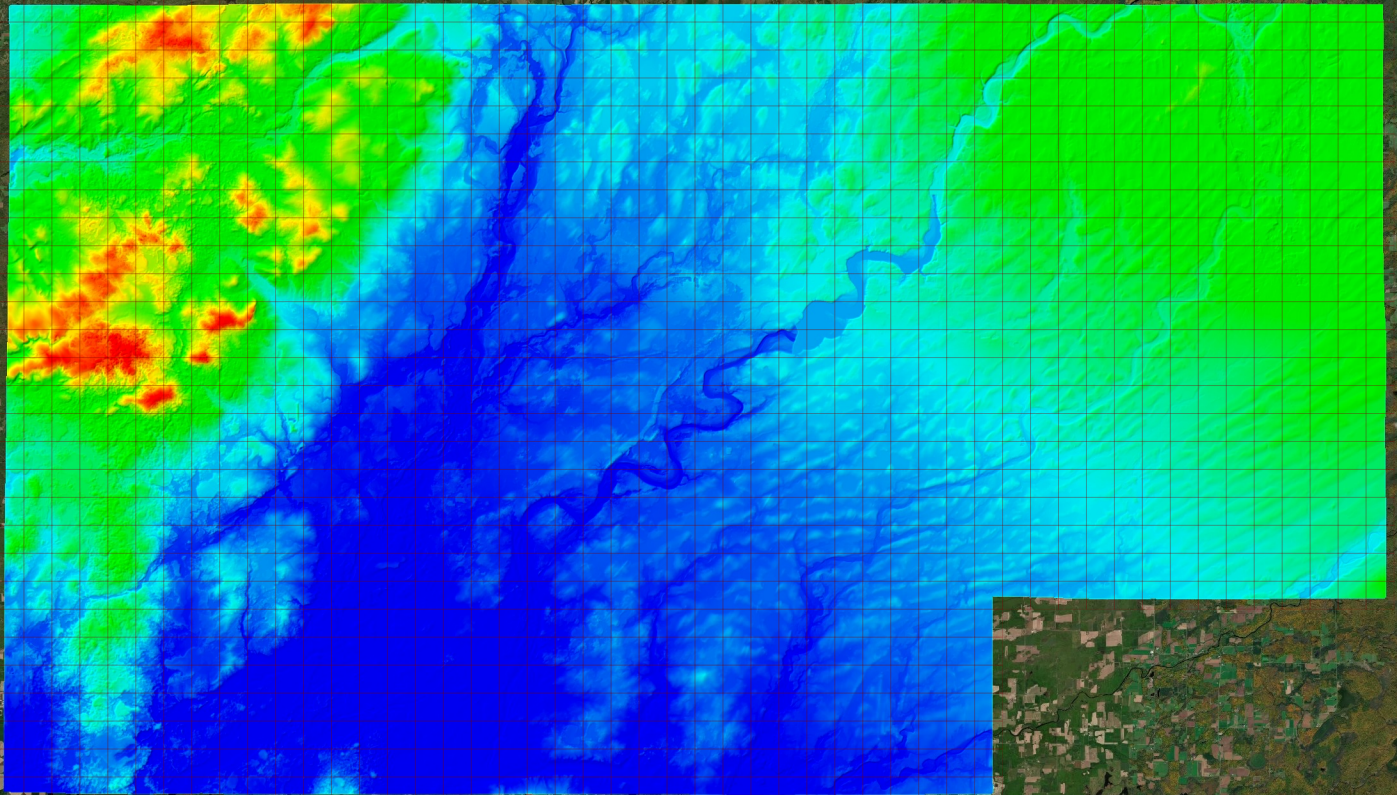


✓ General		
Folder:	G:\Rusk\bare_earth\be_rasters	
Total # of Files:	1,352	(All Valid)
Total File Size:	26.8 GB	(28,724,372,976 bytes)

✓ Tile Sizes / Coordinate Ranges		
Median Tile Size:	4,500' x 4,500'	
Minimum Tile Size:	4,500' x 4,500'	
Maximum Tile Size:	4,500' x 4,500'	
X Range:	698327.53' to 923327.53'	
Y Range:	498460.00' to 628960.00'	

✓ Spatial Reference System		
Horizontal Projection	NAD83(2011) / WISCRS Rusk (ftUS)	1,352 of 1,352 Tiles
Valid OGC Name	Yes	1,352 of 1,352 Tiles
Horizontal Datum	NAD83 (National Spatial Reference System 2011)	1,352 of 1,352 Tiles
Horizontal Units	US survey foot	1,352 of 1,352 Tiles
Vertical Datum	NAVD88 height (ftUS) - Geoid18 (ftUS)	1,352 of 1,352 Tiles
Vertical Units	US survey foot	1,352 of 1,352 Tiles
Vertical USGS-Compliant	Yes	1,352 of 1,352 Tiles
GDAL 2.x Compatible	Yes	1,352 of 1,352 Tiles
Geoid	Geoid18	1,352 of 1,352 Tiles
Matches OGC Template	Yes	1,352 of 1,352 Tiles
GTCitationGeoKey (1026)	NAD83(2011) / WISCRS Rusk (ftUS) + NAVD88 height (ftUS) - Geoid18 (ftUS)	1,352 of 1,352 Tiles
VerticalCitationGeoKey (4097)	NAVD88 height (ftUS) - Geoid18 (ftUS)	1,352 of 1,352 Tiles

✓ Raster		
File Type:	TIF	1,352 of 1,352
Bands:	1	1,352 of 1,352
Grid Size (pixels):	2250 x 2250	1,352 of 1,352
Pixel Resolution:	2.00000000' x 2.00000000'	1,352 of 1,352
Pixel Type:	32-bit	1,352 of 1,352
Compression:	None	1,352 of 1,352
No Data Value:	-999999	1,352 of 1,352

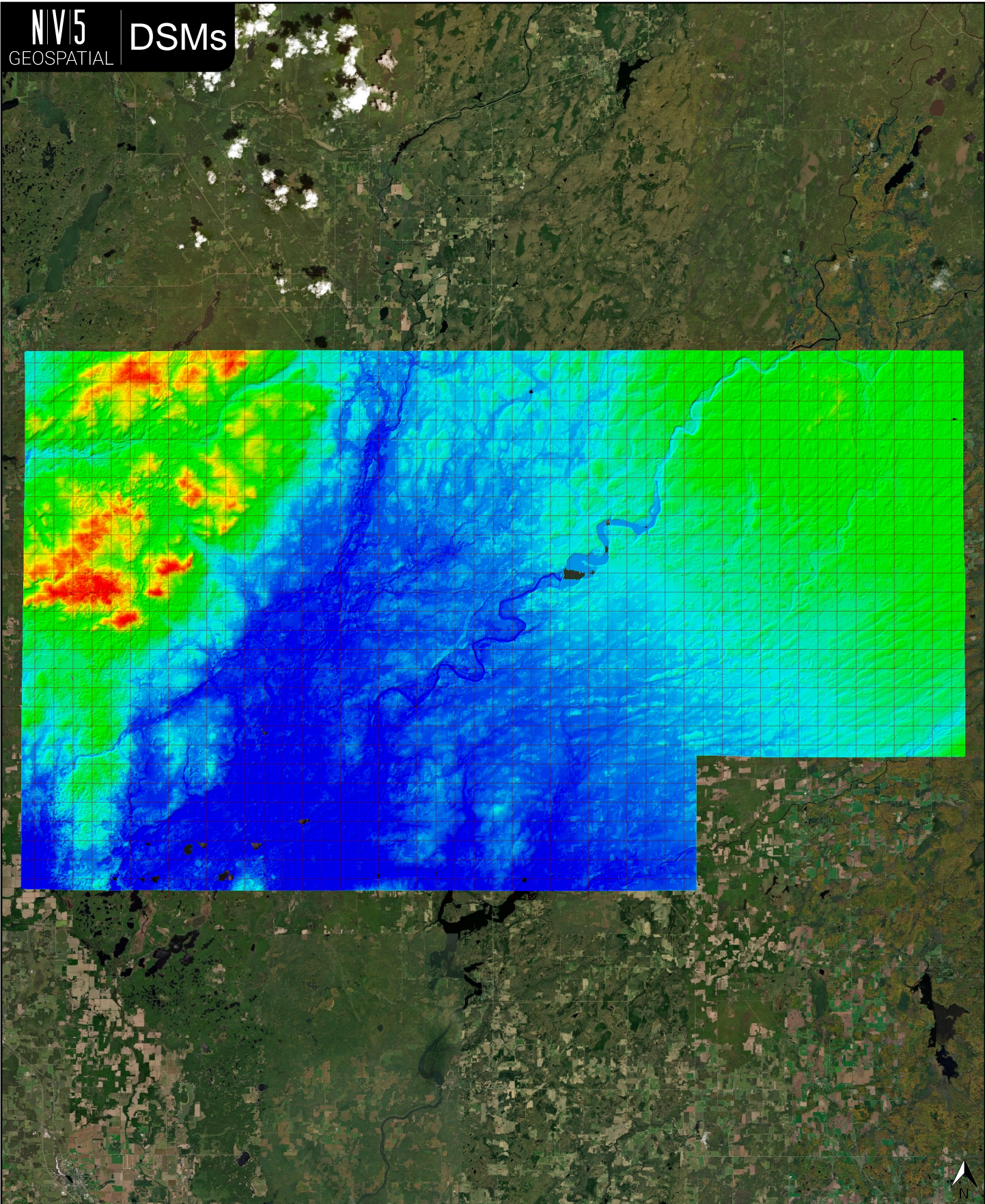


✓ General		
Folder:	G:\Rusk\metadata\spatial_metadata\contractor_provided\maximum_surface_height_raster	
Total # of Files:	1,352	(All Valid)
Total File Size:	26.8 GB	(28,724,372,976 bytes)

✓ Tile Sizes / Coordinate Ranges		
Median Tile Size:	4,500' x 4,500'	
Minimum Tile Size:	4,500' x 4,500'	
Maximum Tile Size:	4,500' x 4,500'	
X Range:	698327.53' to 923327.53'	
Y Range:	498460.00' to 628960.00'	

✓ Spatial Reference System		
Horizontal Projection	NAD83(2011) / WISCRS Rusk (ftUS)	1,352 of 1,352 Tiles
Valid OGC Name	Yes	1,352 of 1,352 Tiles
Horizontal Datum	NAD83 (National Spatial Reference System 2011)	1,352 of 1,352 Tiles
Horizontal Units	US survey foot	1,352 of 1,352 Tiles
Vertical Datum	NAVD88 height (ftUS) - Geoid18 (ftUS)	1,352 of 1,352 Tiles
Vertical Units	US survey foot	1,352 of 1,352 Tiles
Vertical USGS-Compliant	Yes	1,352 of 1,352 Tiles
GDAL 2.x Compatible	Yes	1,352 of 1,352 Tiles
Geoid	Geoid18	1,352 of 1,352 Tiles
Matches OGC Template	Yes	1,352 of 1,352 Tiles
GTCitationGeoKey (1026)	NAD83(2011) / WISCRS Rusk (ftUS) + NAVD88 height (ftUS) - Geoid18 (ftUS)	1,352 of 1,352 Tiles
VerticalCitationGeoKey (4097)	NAVD88 height (ftUS) - Geoid18 (ftUS)	1,352 of 1,352 Tiles

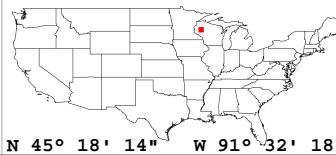
✓ Raster		
File Type:	TIF	1,352 of 1,352
Bands:	1	1,352 of 1,352
Grid Size (pixels):	2250 x 2250	1,352 of 1,352
Pixel Resolution:	2.00000000' x 2.00000000'	1,352 of 1,352
Pixel Type:	32-bit	1,352 of 1,352
Compression:	None	1,352 of 1,352
No Data Value:	-999999	1,352 of 1,352



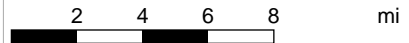
1044.76 sf

1412.98 sf

1781.19 sf



N 45° 18' 14" W 91° 32' 18"



Scale 1:864

1 in = 5.85 mi

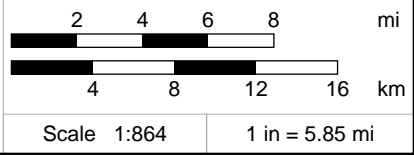
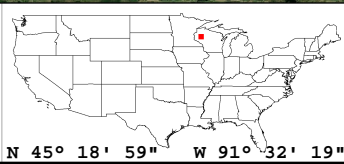
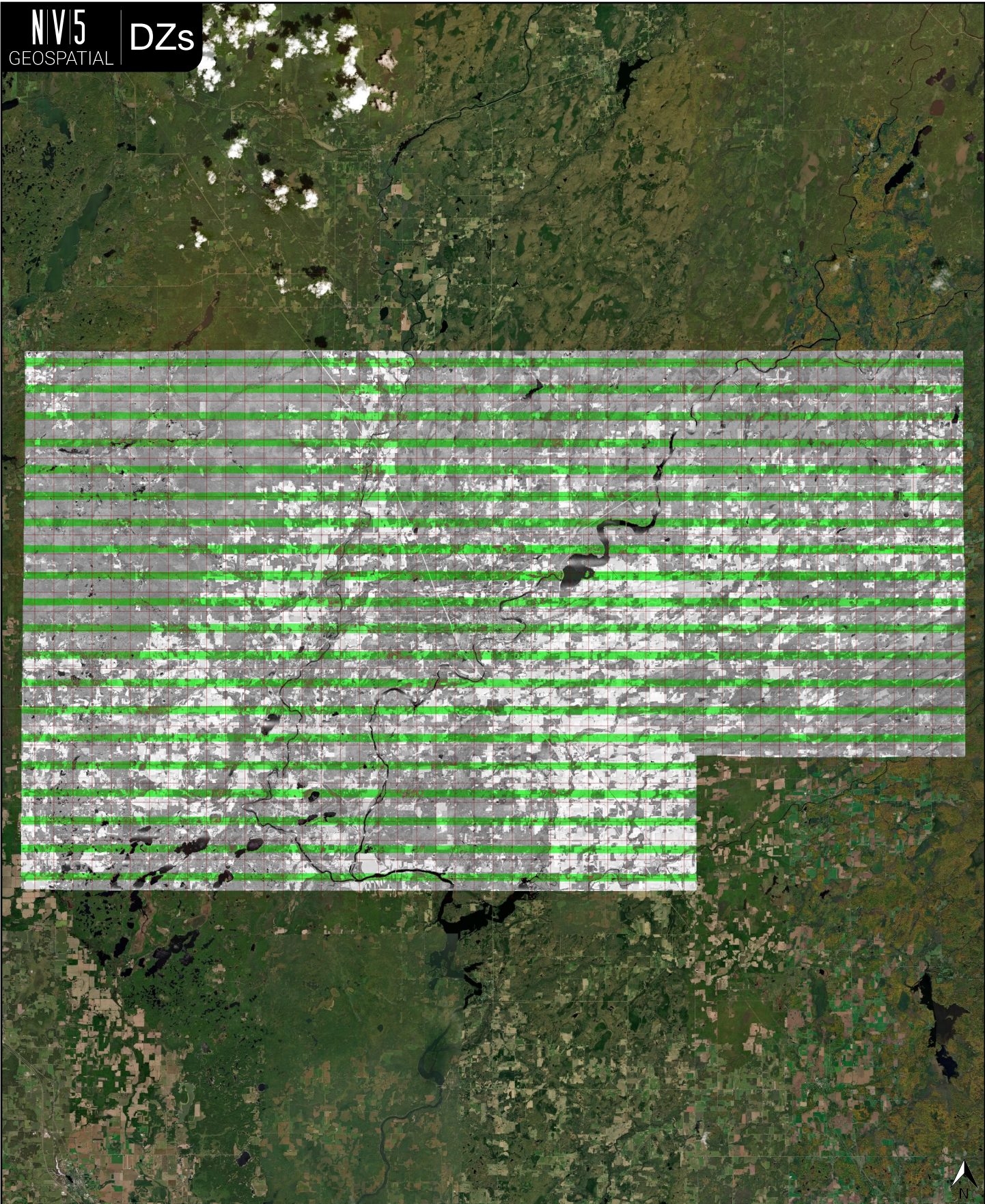


✓ General	
Folder:	G:\Rusk\metadata\spatial_metadata\contractor_provided\swath_separation_images
Total # of Files:	1,352 (All Valid)
Total File Size:	20.1 GB (21,547,374,264 bytes)

✓ Tile Sizes / Coordinate Ranges	
Median Tile Size:	4,500' x 4,500'
Minimum Tile Size:	4,500' x 4,500'
Maximum Tile Size:	4,500' x 4,500'
X Range:	698327.53' to 923327.53'
Y Range:	498460.00' to 628960.00'

✓ Spatial Reference System		
Horizontal Projection	NAD83(2011) / WISCRS Rusk (ftUS)	1,352 of 1,352 Tiles
Horizontal Datum	NAD83 (National Spatial Reference System 2011)	1,352 of 1,352 Tiles
Horizontal Units	US survey foot	1,352 of 1,352 Tiles
Vertical Datum	NAVD88 height (ftUS) - Geoid18 (ftUS)	1,352 of 1,352 Tiles
Vertical Units	US survey foot	1,352 of 1,352 Tiles
Geoid	Geoid18	1,352 of 1,352 Tiles

✓ Raster		
File Type:	TIF	1,352 of 1,352
Bands:	3	1,352 of 1,352
Grid Size (pixels):	2250 x 2250	1,352 of 1,352
Pixel Resolution:	2.00000000' x 2.00000000'	1,352 of 1,352
Pixel Type:	8-bit (RGB)	1,352 of 1,352
Compression:	NONE	1,352 of 1,352
No Data Value:	0	1,352 of 1,352



✓ General	
Folder:	G:\Rusk\other\Intensity
Total # of Files:	1,352 (All Valid)
Total File Size:	6.7 GB (7,192,854,968 bytes)

✓ Tile Sizes / Coordinate Ranges	
Median Tile Size:	4,500' x 4,500'
Minimum Tile Size:	4,500' x 4,500'
Maximum Tile Size:	4,500' x 4,500'
X Range:	698327.53' to 923327.53'
Y Range:	498460.00' to 628960.00'

✓ Spatial Reference System		
Horizontal Projection	NAD83(2011) / WISCRS Rusk (ftUS)	1,352 of 1,352 Tiles
Horizontal Datum	NAD83 (National Spatial Reference System 2011)	1,352 of 1,352 Tiles
Horizontal Units	US survey foot	1,352 of 1,352 Tiles
Vertical Datum	NONE	1,352 of 1,352 Tiles
Vertical Units	NONE	1,352 of 1,352 Tiles
Geoid	NONE	1,352 of 1,352 Tiles

✓ Raster		
File Type:	TIF	1,352 of 1,352
Bands:	1	1,352 of 1,352
Grid Size (pixels):	2250 x 2250	1,352 of 1,352
Pixel Resolution:	2.00000000' x 2.00000000'	1,352 of 1,352
Pixel Type:	8-bit Unsigned Integer (MINISBLACK)	1,352 of 1,352
Compression:	NONE	1,352 of 1,352
No Data Value:	0	1,352 of 1,352

