

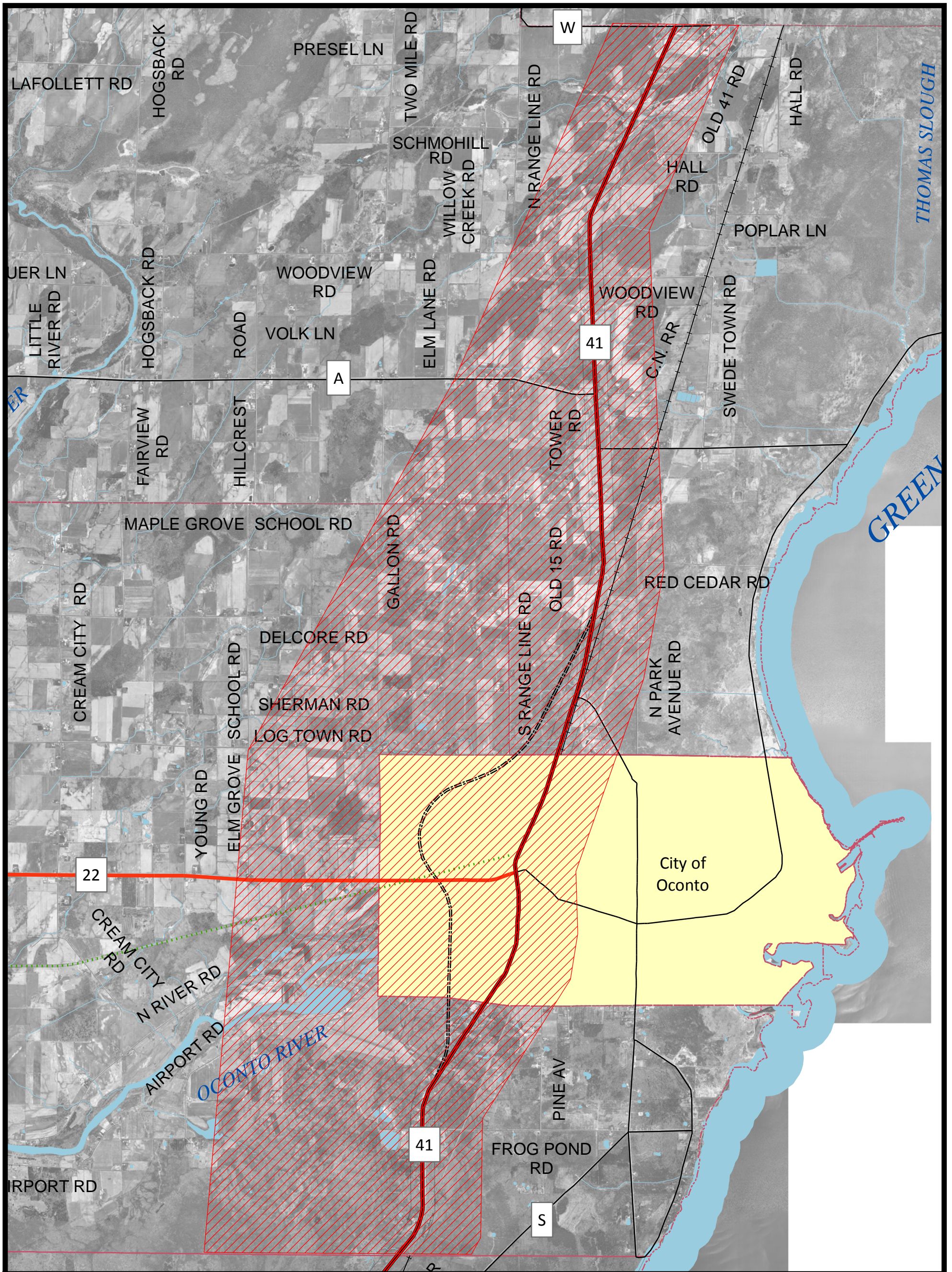
Current LiDar 2011 contains original LiDAR data delivered in 2005, bay shore edits to correct 2005 data delivered in 2009, and new LiDAR in the Hwy 41 and 141 corridors delivered in 2010.

For breakline, bare earth, or point cloud data go to **Z:\Oconto Contours\ORIGINAL LiDAR 2005** for original data and **Z:\Oconto Contours\EDITS\2010 HIGHWAY COORIDOR** for updates in the 41 and 141 corridors.

Maps of the Hwy 41 and 141 LiDAR update areas are attached.




# HWY 41 CORRIDOR LiDAR RFP



This map is neither a legally recorded map nor a survey, and is not intended to be used as either. It is a compilation of records, information and data to be used for reference purposes only. Oconto County is not responsible for any inaccuracies herein contained.

-  U.S. Highway
-  State Highway
-  County Highway

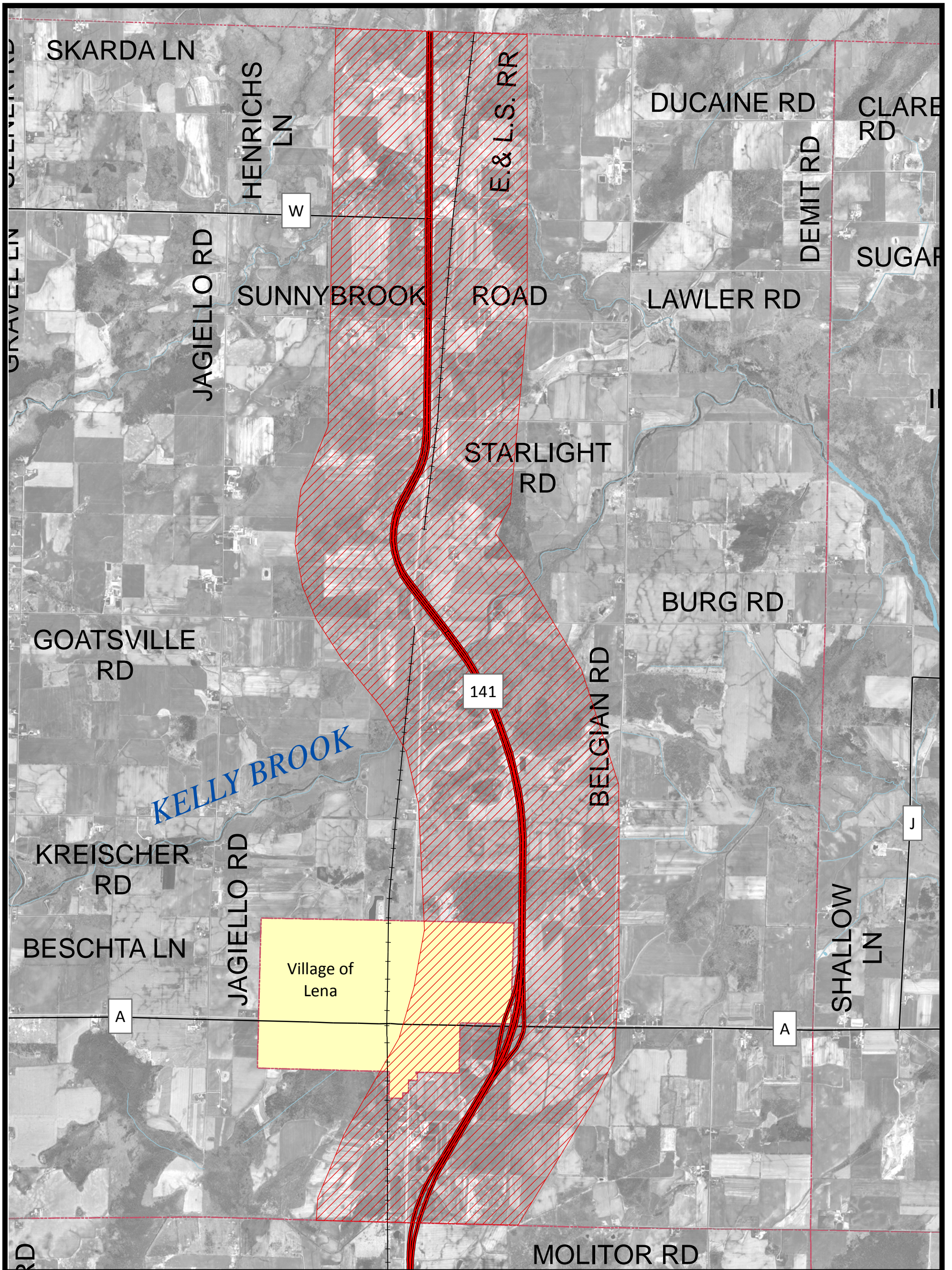


-  = 41 LiDAR Request Area  
\* See RFP for specifics






# HWY 141 CORRIDOR LiDAR RFP



This map is neither a legally recorded map nor a survey, and is not intended to be used as either. It is a compilation of records, information and data to be used for reference purposes only. Oconto County is not responsible for any inaccuracies herein contained.

-  U.S. Highway
-  State Highway
-  County Highway



 = 141 LiDAR Request Area  
\* See RFP for specifics

