

Airborne Topographic Lidar Report

Wisconsin WROC - 3DEP
Lafayette County Lidar 2019

Prime Contractor: Ayres
Airborne Lidar Acquisition: Quantum Spatial

The logo for Ayres Associates, featuring the word "AYRES" in a bold, sans-serif font. The letters are white and set against a dark blue background that is part of a larger white trapezoidal shape.

Ingenuity, Integrity, and Intelligence.

www.AyresAssociates.com





Table of Contents

1. Summary / Scope	Page 1
1.1. Summary	Page 1
1.2 Scope	Page 1
1.3 Coverage.....	Page 1
1.4 Duration.....	Page 1
1.5 Issues.....	Page 1
1.6 Deliverables	Page 2
2. Planning / Equipment	Page 4
2.1 Flight Planning.....	Page 4
2.2 Lidar Sensor	Page 4
2.3 Aircraft	Page 7
2.4 Time Period.....	Page 8
3. Processing Summary	Page 9
3.1 Lidar Processing	Page 9
4. Project Coverage Verification	Page 11
5. Ground Control and Check Point Collection	Page 13
5.1 Calibration Control Point Testing	Page 13





List of Figures

Figure 1. Project Boundary	Page 3
Figure 2. Planned Flight Lines	Page 5
Figure 3. Riegl VQ 1560i Lidar Sensor	Page 6
Figure 4. Some of Quantum Spatial’s Planes	Page 7
Figure 5. Lidar Tile Layout	Page 10
Figure 6. Lidar Flightline Coverage.....	Page 12
Figure 7. Calibration Control Point Locations	Page 14

List of Tables

Table 1. Originally Planned Lidar Specifications	Page 1
Table 2. Lidar System Specifications	Page 6
Table 3. Calibration Control Point Report.....	Page 15



1. Summary / Scope

1.1 Summary

This report contains a summary of the WROC 2019 Lafayette County lidar acquisition task order, issued by Lafayette County, Wisconsin. The intent of this document is only to provide specific validation information for the data acquisition/collection, processing, and production of deliverables completed as specified in the task order.

1.2 Scope

Aerial topographic lidar was acquired using state-of-the-art technology along with the necessary surveyed ground control points (GCPs) and airborne GPS and inertial navigation systems. The aerial data collection was designed with the following specifications listed in Table 1 below.

Table 1. Originally Planned Lidar Specifications

AVERAGE POINT DENSITY	FLIGHT ALTITUDE (AGL)	FIELD OF VIEW	MINIMUM SIDE OVERLAP	RMSE _z
2 pts / m ²	2195 m	58.5°	20%	≤10 cm

1.3 Coverage

The project boundary covers 641 square miles over Wisconsin. A buffer of 100 meters was created to meet task order specifications. Project extents are shown in Figure 1.

1.4 Duration

Lidar data was acquired on April 8, 2019, in 2 lifts. See “Section: 2.4. Time Period” for more details.

1.5 Issues

There were no major issues to report for this project.

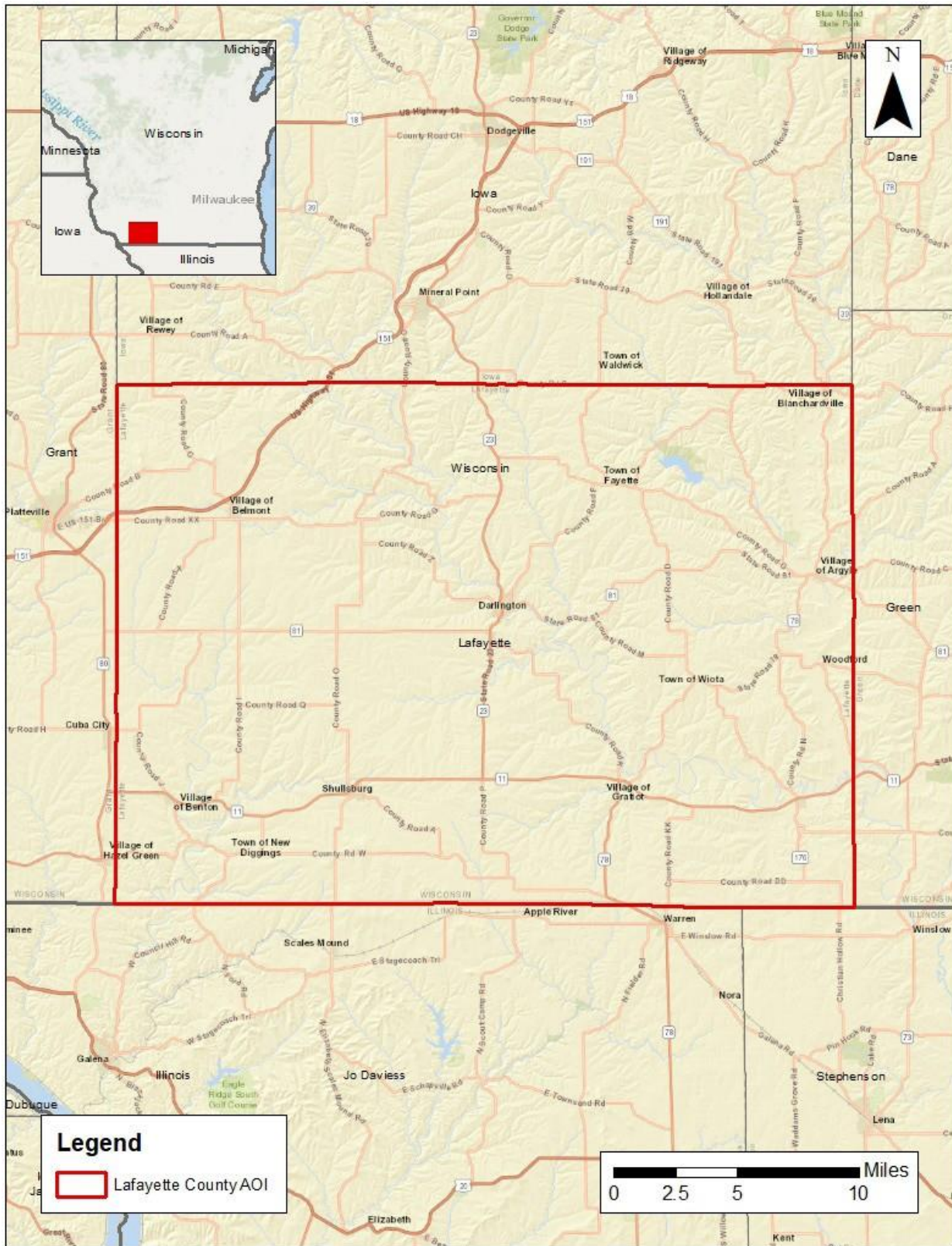
1.6 Deliverables

The following products were produced and delivered:

- Flight Collection Report in .PDF and .DOC format
- One copy of lidar tiled point cloud data in LAS format on external hard drive
- All flight mission parameters appropriate for inclusion in FGDC/USGS compliant metadata

All geospatial deliverables were produced with a horizontal datum/projection of Lafayette County Coordinate System (WISCRS), NAD83 (2011) and a vertical datum/projection of NAVD88 (Geoid 12B), US Survey Feet. All tiled deliverables have a tile size of 4,500-ft x 4,500-ft.

Figure 1. Project Boundary



2. Planning / Equipment

2.1 Flight Planning

Flight planning was based on the unique project requirements and characteristics of the project site. The basis of planning included: required accuracies, type of development, amount/type of vegetation within project area, required data posting, and potential altitude restrictions for flights in project vicinity.

Detailed project flight planning calculations were performed for the project using RiPARAMETER planning software. The entire target area was comprised of 23 planned flight lines (Figure 2).

2.2 Lidar Sensor

Quantum Spatial used a Riegl VQ 1560i lidar sensor (Figure 3), serial number 061, during the project.

The Riegl 1560i system has a laser pulse repetition rate of up to 2 MHz, resulting in more than 1.3 million measurements per second. The system uses a Multi-Pulse in the Air option (MPIA). The sensor is also equipped with the ability to measure up to an unlimited number of targets per pulse from the laser.

A brief summary of the aerial acquisition parameters for the project are shown in the Lidar System Specifications in Table 2.

Figure 2. Planned Flight Lines

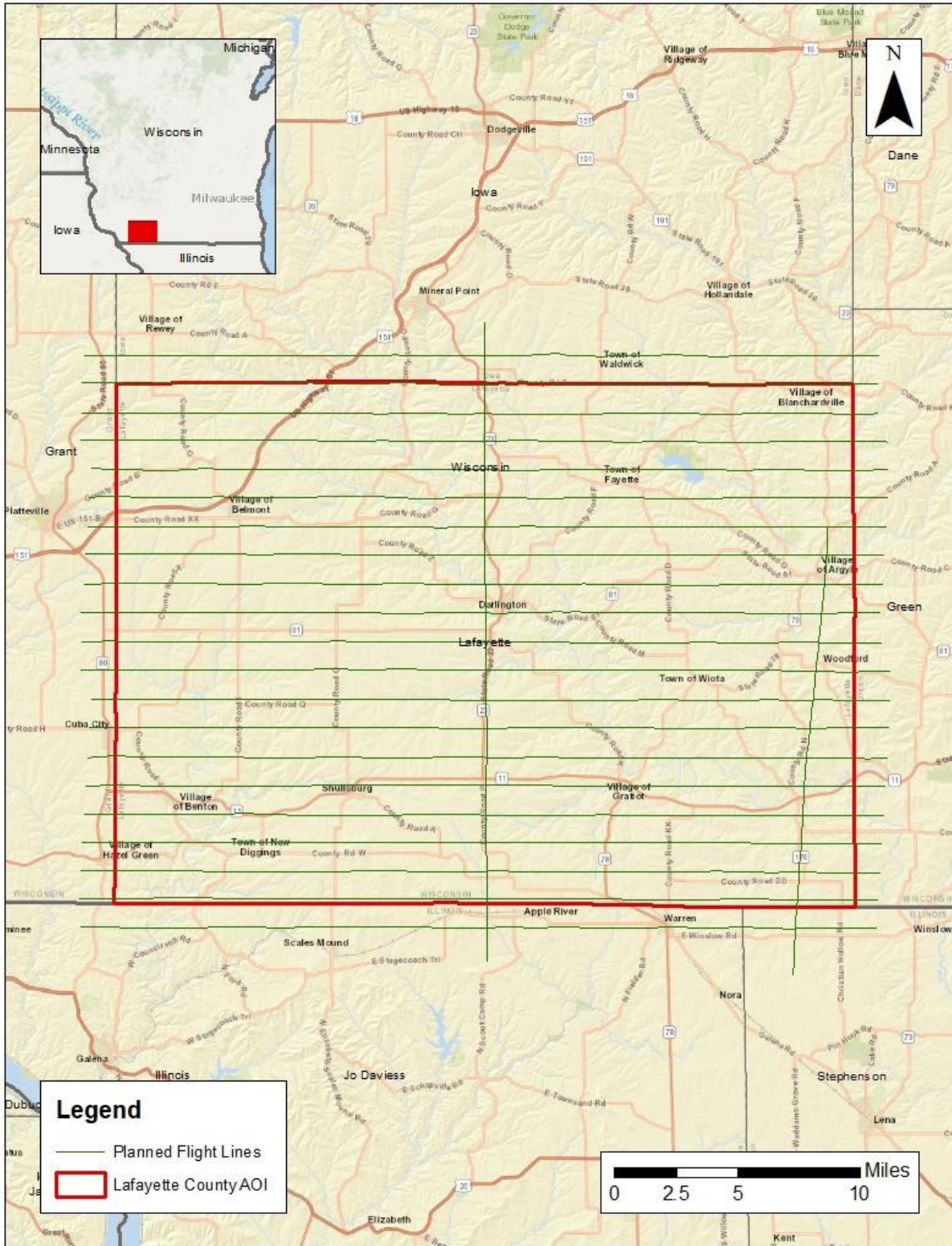


Table 2. Lidar System Specifications

Terrain and Aircraft Scanner	Flying Height	2195 m
	Recommended Ground Speed	145 kts
Scanner	Field of View	58.5°
	Scan Rate Setting Used	73.9 Hz
Laser	Laser Pulse Rate Used	350 kHz
	Multi Pulse in Air Mode	yes
Coverage	Full Swath Width	2380 m
	Line Spacing	1904 m
Point Spacing and Density	Average Point Spacing	.71 m
	Average Point Density	2 pts / m ²

Figure 3. Riegl VQ 1560i Lidar Sensor



2.3 Aircraft

All flights for the project were accomplished through the use of customized planes. Plane type and tail numbers are listed below.

Lidar Collection Planes

- Piper Navajo, Tail Number(s): N73TM

This aircraft provides an ideal, stable aerial base for lidar acquisition. This aerial platform has relatively fast cruise speeds, which are beneficial for project mobilization/demobilization while maintaining relatively slow stall speeds, proving ideal for collection of high-density, consistent data posting using a state-of-the-art Riegl VQ 1560i lidar system. Some of Quantum Spatial's operating aircraft can be seen in Figure 4 below.

Figure 4. Some of Quantum Spatial's Planes



2.4 Time Period

Project-specific flights were conducted on April 8, 2019. Two aircraft lifts were completed. Accomplished lifts are listed below.

- 20190408A (SN 061, N73TM)
- 20190408B (SN 061, N73TM)

3. Processing Summary

3.1 Lidar Processing

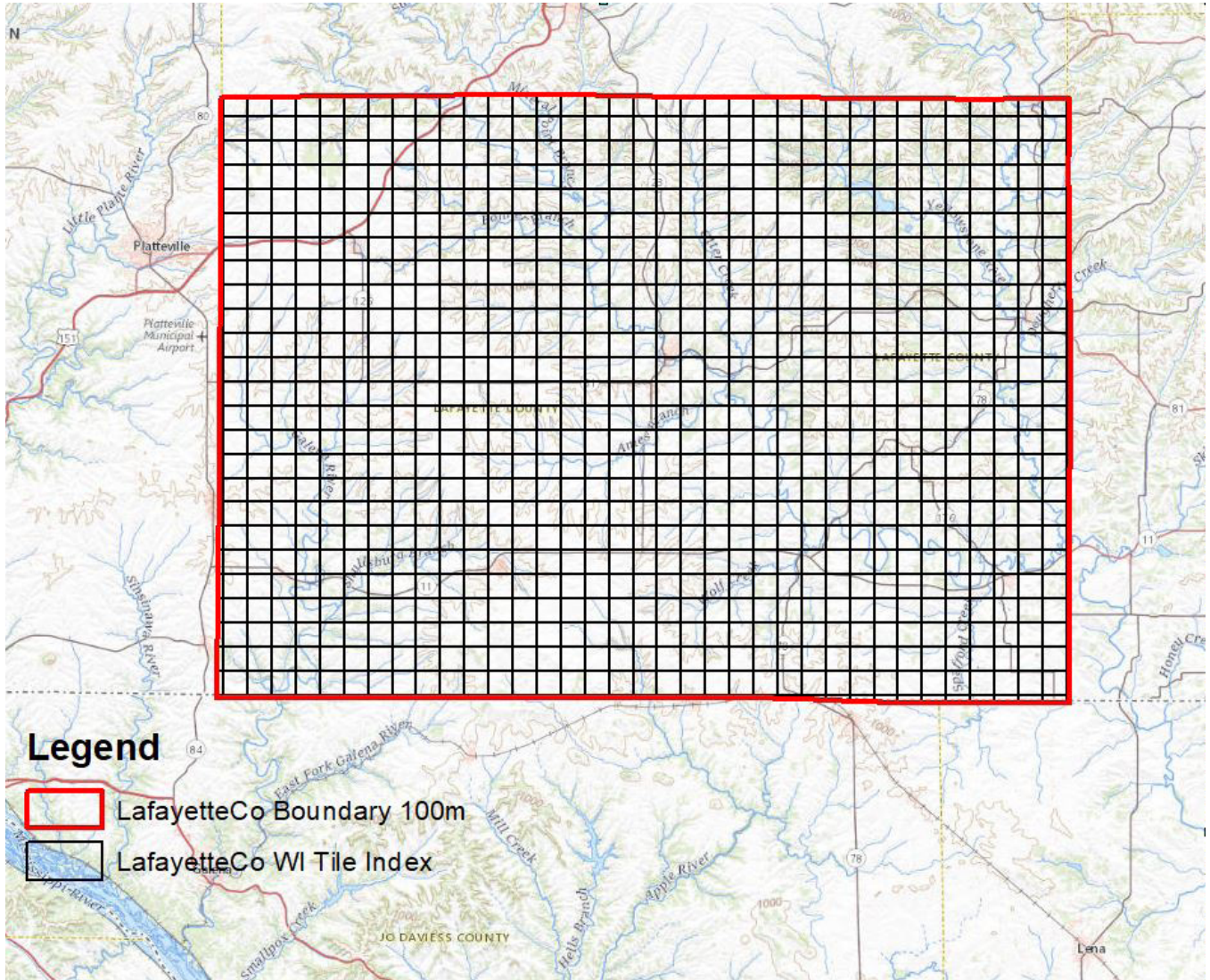
Applanix + POSPac Mobile Mapping Suite software was used for post-processing of airborne GPS and inertial data (IMU), which is critical to the positioning and orientation of the lidar sensor during all flights. Applanix POSPac combines aircraft raw trajectory data with stationary GPS base station data yielding a “Smoothed Best Estimate Trajectory (SBET) necessary for additional post processing software to develop the resulting geo-referenced point cloud from the lidar missions.

During the sensor trajectory processing (combining GPS & IMU datasets), certain statistical graphs and tables are generated within the Applanix POSPac processing environment which are commonly used as indicators of processing stability and accuracy. This data for analysis include: Max horizontal / vertical GPS variance, separation plot, altitude plot, PDOP plot, base station baseline length, processing mode, number of satellite vehicles, and mission trajectory.

The generated point cloud is the mathematical three dimensional composite of all returns from all laser pulses as determined from the aerial mission. Laser point data are imported into TerraScan and a manual calibration is performed to assess the system offsets for pitch, roll, heading and scale. At this point this data is ready for analysis, classification, and filtering to generate a bare earth surface model in which the above-ground features are removed from the data set. Point clouds were created using the RiPROCESS software. GeoCue distributive processing software was used in the creation of some files needed in downstream processing, as well as in the tiling of the dataset into more manageable file sizes. TerraScan and TerraModeler software packages were then used for the automated data classification, manual cleanup, and bare earth generation. Project specific macros were developed to classify the ground and remove side overlap between parallel flight lines.

All data was manually reviewed and any remaining artifacts removed using functionality provided by TerraScan and TerraModeler. Global Mapper was used as a final check of the bare earth dataset. GeoCue was used to create the deliverable industry-standard LAS files for both the All Point Cloud Data and the Bare Earth. In-house software was then used to perform final statistical analysis of the classes in the LAS files.

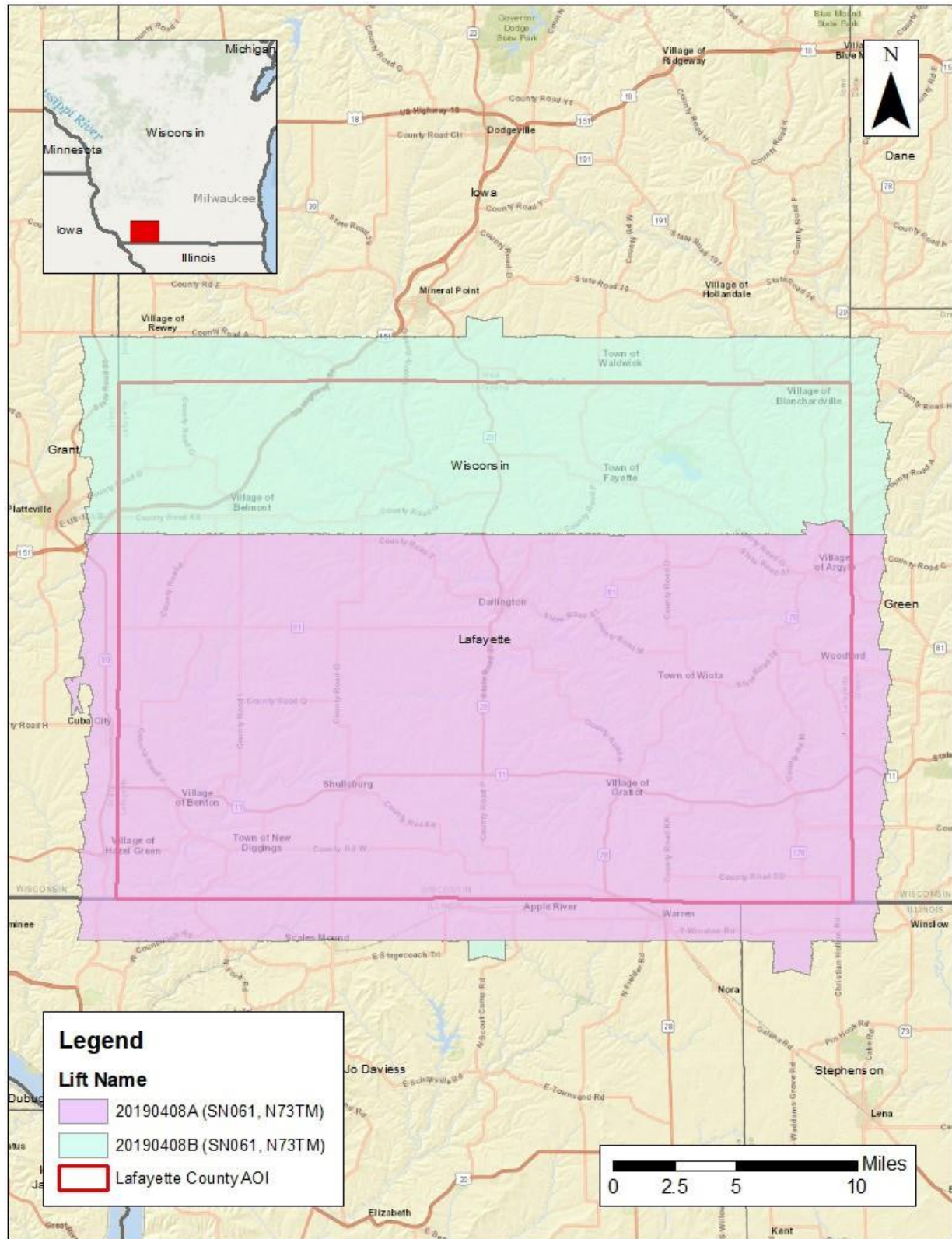
Figure 5. Lidar Tile Layout



4. Project Coverage Verification

Coverage verification was performed by comparing coverage of processed .LAS files captured during project collection to generate project shape files depicting boundaries of specified project areas. Please refer to Figure 6.

Figure 6. Lidar Flightline Coverage



5. Ground Control and Check Point Collection

Quantum Spatial used 16 ground control (calibration) points collected by Ayres as an independent test of the accuracy of this project.

5.1 Calibration Control Point Testing

Figure 7 shows the location of each bare earth calibration point for the project area. Table 3 depicts the Control Report for the lidar bare earth calibration points, as computed in TerraScan as a quality assurance check. Note that these results of the surface calibration are not an independent assessment of the accuracy of these project deliverables, but the statistical results do provide additional feedback as to the overall quality of the elevation surface.

Figure 7. Calibration Control Point Locations

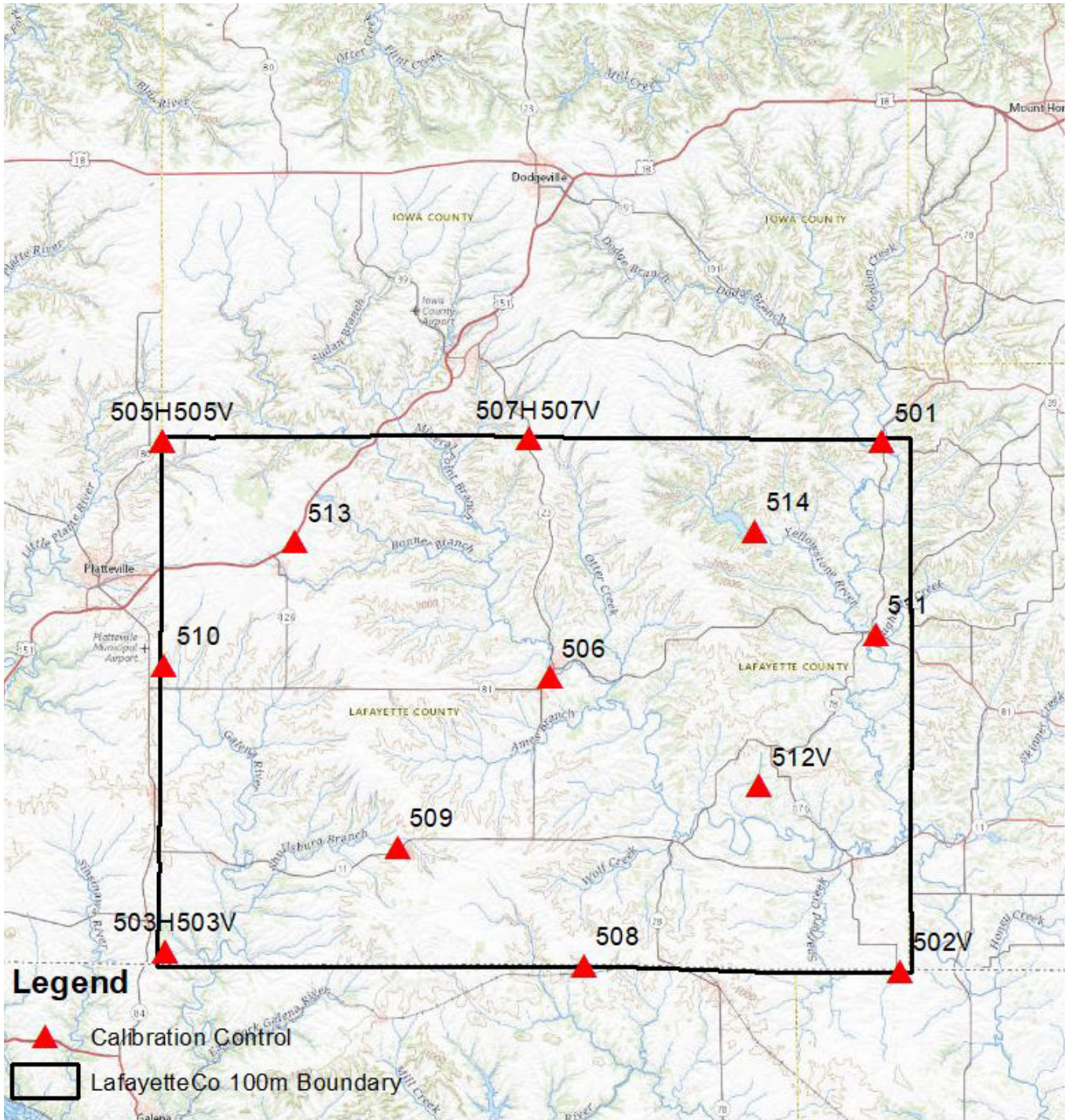


Table 3. Calibration Control Point Report
Units = US survey feet

NUMBER	EASTING	NORTHING	KNOWN Z	LASER Z	DZ
501	552635.637	214403.582	856.398	856.470	+0.072
502V	556538.098	102288.586	811.948	811.794	-0.154
503H	400862.532	106508.610	824.138	824.213	+0.075
503V	400855.457	106479.893	819.723	819.796	+0.073
505H	400240.335	214459.192	1083.155	1083.320	+0.165
505V	400212.099	214421.380	1086.339	1086.300	-0.039
506	482316.120	164484.469	824.211	824.200	-0.011
507H	477835.282	214909.972	1073.045	1073.093	+0.048
507V	477791.601	214930.057	1074.680	1074.595	-0.085
508	489452.639	103434.000	1016.441	1016.332	-0.109
509	450121.007	128592.653	925.136	924.975	-0.161
510	400734.614	167069.288	998.396	998.316	-0.080
511	551276.445	173548.686	858.570	858.676	+0.106
512V	526528.986	141438.079	946.298	946.188	-0.110
513	428487.654	193140.981	1094.682	1094.687	+0.005
514	525691.289	195427.293	865.743	865.648	-0.095
Average Dz		-0.019			
Minimum Dz		-0.161			
Maximum Dz		+0.165			
Average Magnitude		0.087			
Root Mean Square		0.098			
Std Deviation		0.100			