

Classified Point Cloud

Deliverable 1 Summary

✓ General		
Folder:	E:\Work Package ID 183663\Iron Work Unit ID (209903)\point_cloud\tilecls	
Total # of Files:	3,369	(All Valid)
Total File Size:	483.3 GB	(518,926,606,362 bytes)

✓ Tile Sizes	
Median Tile Size:	2,500' x 2,500'
Minimum Tile Size:	16' x 42'
Maximum Tile Size:	2,500' x 2,500'
X Range:	649607.21' to 811708.60'
Y Range:	196391.71' to 411686.55'
Elevation Range:	-294.22' to 5575.15'

✓ LAS Version And Point Record Formats	
v1.4, Point Record Format 6	3,369 of 3,369 Tiles

✓ Spatial Reference System		
Horizontal Projection	NAD83(2011) / WISCRS Iron (ftUS)	3,369 of 3,369 Tiles
Horizontal Datum	NAD83 (National Spatial Reference System 2011)	3,369 of 3,369 Tiles
Horizontal Units	US survey foot	3,369 of 3,369 Tiles
Vertical Datum	NAVD88 height (ftUS) - Geoid12B (ftUS)	3,369 of 3,369 Tiles
Vertical Units	US survey foot	3,369 of 3,369 Tiles
Vertical USGS-Compliant	Yes	3,369 of 3,369 Tiles
Geoid	Geoid12B	3,369 of 3,369 Tiles
Storage Method	WKT	3,369 of 3,369 Tiles
Matches OGC Template	Yes	3,369 of 3,369 Tiles

✓ GPS Time Type	
Adjusted	3,369 of 3,369 Tiles

✓ File Source ID Equals 0	
Yes	3,369 of 3,369 Tiles

✓ VLR/EVLR Reserved Equals 0	
Yes	10,107 of 10,107 Records

✓ Unnecessary Bytes At End Of File	
No	3,369 of 3,369 Tiles

✓ Legacy Point Count Check	
Zero	3,369 of 3,369 Tiles

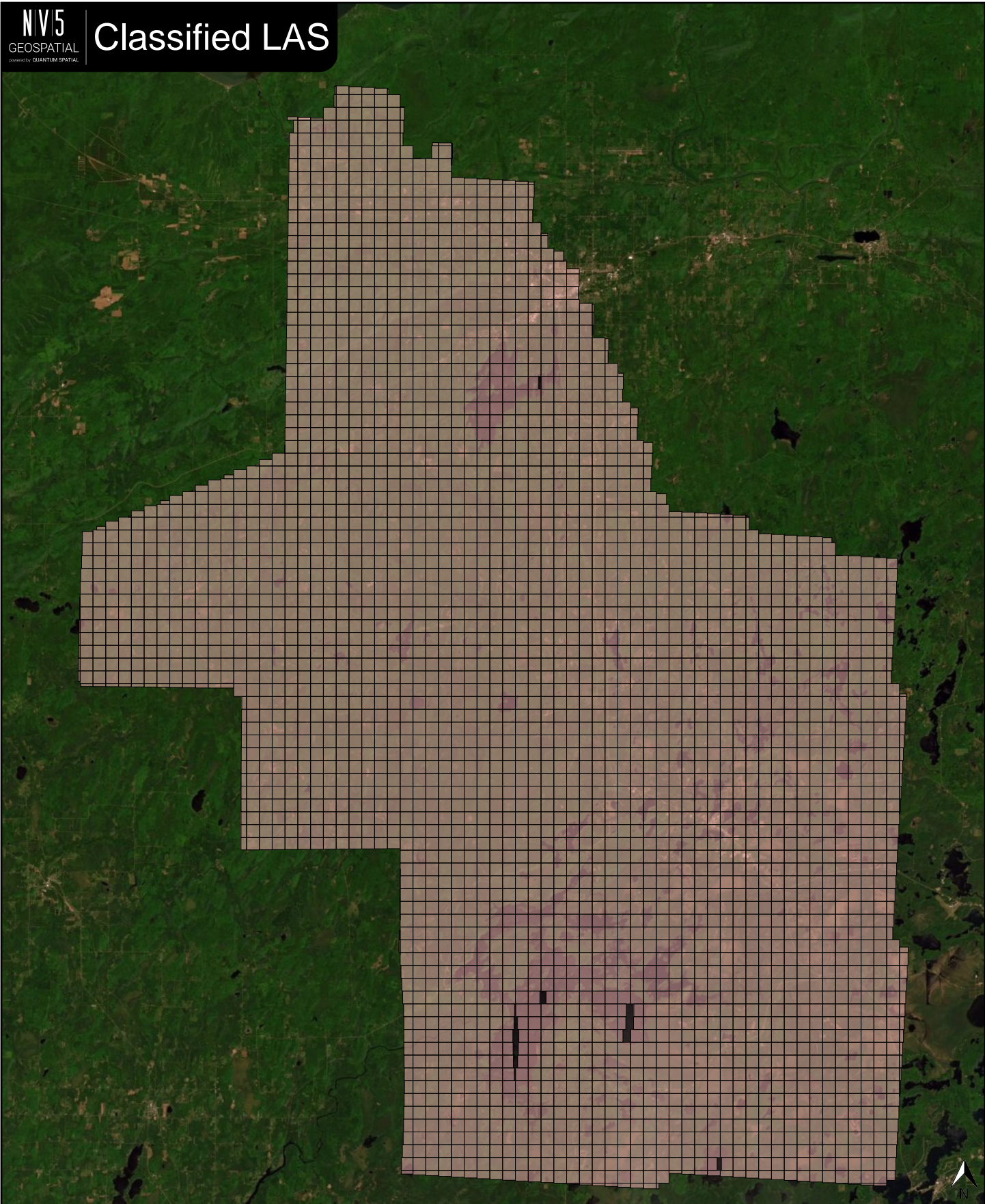
✓ System Identifier	
MERGE	3,369 of 3,369 Tiles

Classified Point Cloud Continued...

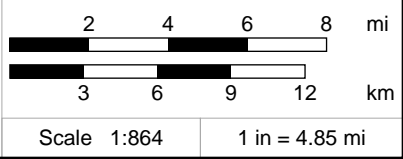
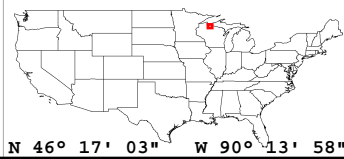
Deliverable 1 Summary

✓ Generating Software	
QSI LiDAR Suite	3,369 of 3,369 Tiles

Classified LAS



Classified LAS Tiles (3,369)

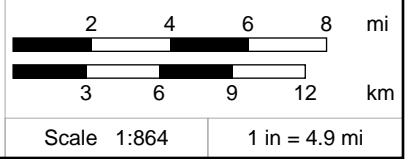
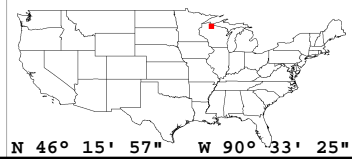
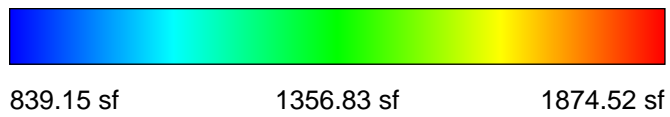
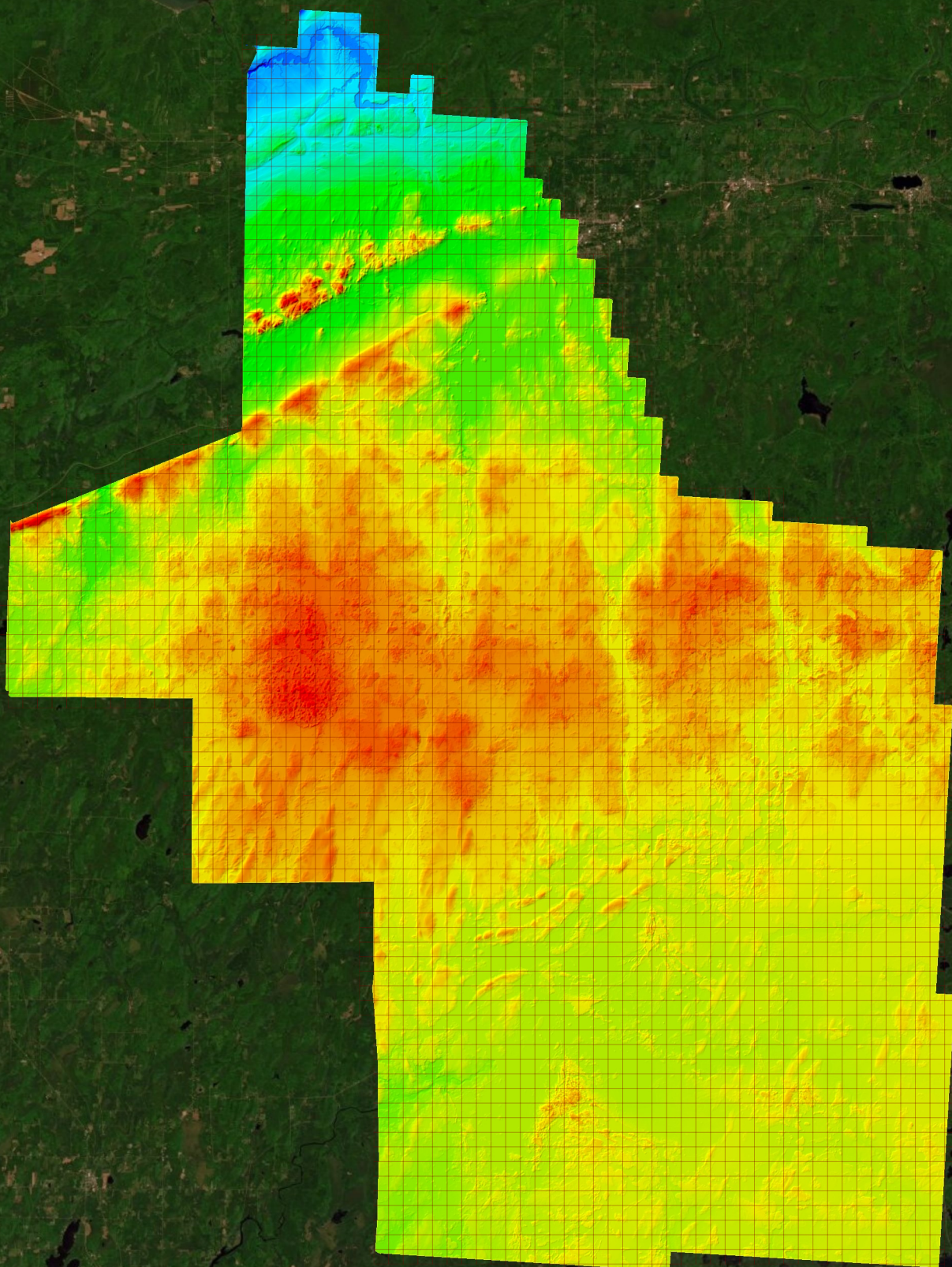


✓ General		
Folder:	E:\Work Package ID 183663\Iron Work Unit ID (209903)\bare_earth\be_rasters	
Total # of Files:	3,369	(All Valid)
Total File Size:	20.6 GB	(22,095,815,592 bytes)

✓ Tile Sizes		
Median Tile Size:	2,500' x 2,500'	
Minimum Tile Size:	2,500' x 2,500'	
Maximum Tile Size:	2,500' x 2,500'	
X Range:	647500.00' to 812500.00'	
Y Range:	195000.00' to 412500.00'	

✓ Spatial Reference System		
Horizontal Projection	NAD83(2011) / WISCRS Iron (ftUS)	3,369 of 3,369 Tiles
Horizontal Datum	NAD83 (National Spatial Reference System 2011)	3,369 of 3,369 Tiles
Horizontal Units	US survey foot	3,369 of 3,369 Tiles
Vertical Datum	NAVD88 height (ftUS) - Geoid12B (ftUS)	3,369 of 3,369 Tiles
Vertical Units	US survey foot	3,369 of 3,369 Tiles
Vertical USGS-Compliant	Yes	3,369 of 3,369 Tiles
GDAL 2.x Compatible	Yes	3,369 of 3,369 Tiles
Geoid	Geoid12B	3,369 of 3,369 Tiles
Matches OGC Template	Yes	3,369 of 3,369 Tiles

✓ Raster		
File Type:	TIF	3,369 of 3,369
Bands:	1	3,369 of 3,369
Grid Size (pixels):	1250 x 1250	3,369 of 3,369
Pixel Resolution:	2.00000000' x 2.00000000'	3,369 of 3,369
Pixel Type:	32-bit	3,369 of 3,369
Compression:	None	3,369 of 3,369
No Data Value:	-9999	3,369 of 3,369

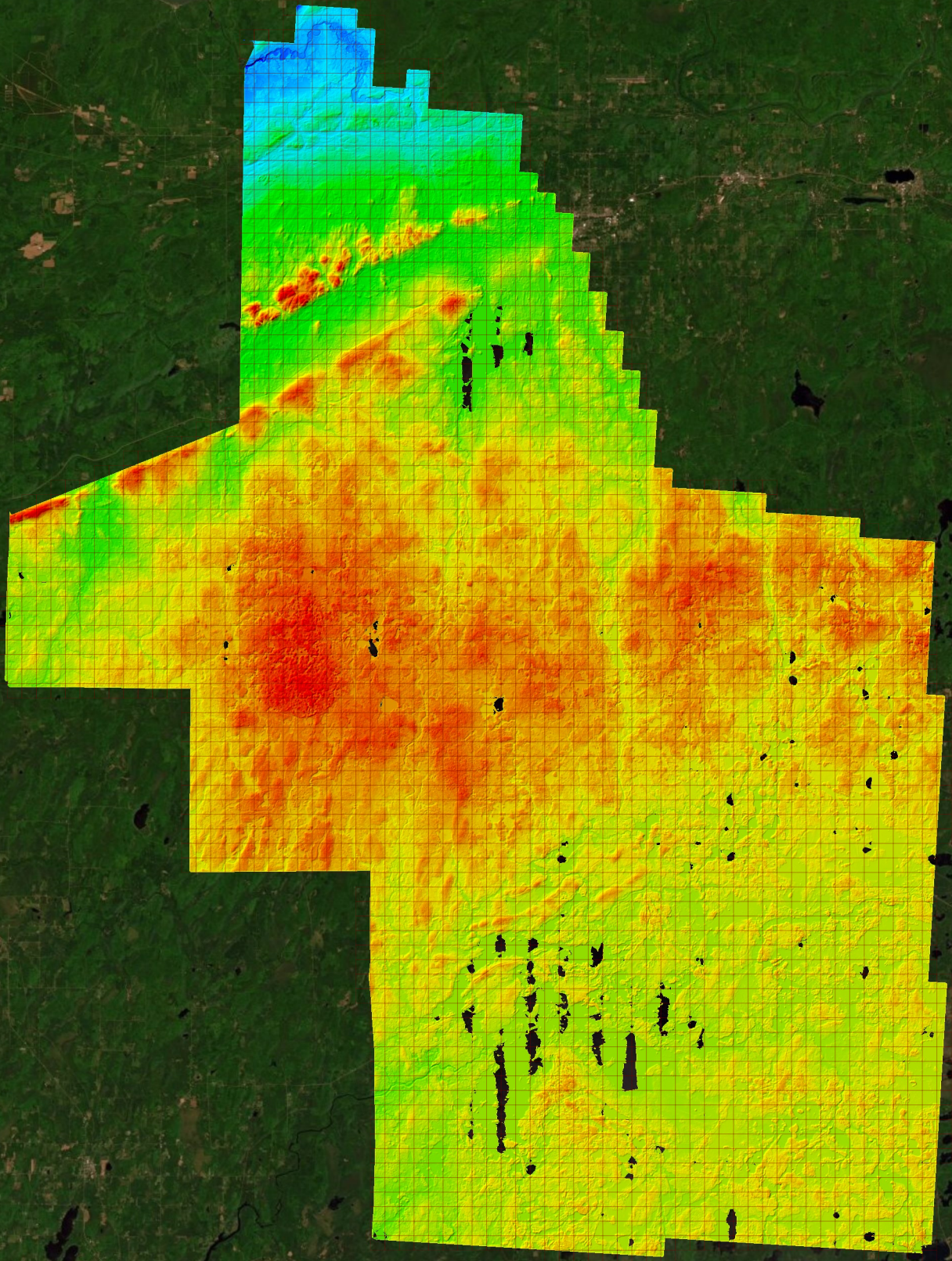


✓ General		
Folder:	E:\Work Package ID 183663\Iron Work Unit ID (209903)\other\HH	
Total # of Files:	3,369	(All Valid)
Total File Size:	20.6 GB	(22,095,815,592 bytes)

✓ Tile Sizes	
Median Tile Size:	2,500' x 2,500'
Minimum Tile Size:	2,500' x 2,500'
Maximum Tile Size:	2,500' x 2,500'
X Range:	647500.00' to 812500.00'
Y Range:	195000.00' to 412500.00'

✓ Spatial Reference System		
Horizontal Projection	NAD83(2011) / WISCRS Iron (ftUS)	3,369 of 3,369 Tiles
Horizontal Datum	NAD83 (National Spatial Reference System 2011)	3,369 of 3,369 Tiles
Horizontal Units	US survey foot	3,369 of 3,369 Tiles
Vertical Datum	NAVD88 height (ftUS) - Geoid12B (ftUS)	3,369 of 3,369 Tiles
Vertical Units	US survey foot	3,369 of 3,369 Tiles
Vertical USGS-Compliant	Yes	3,369 of 3,369 Tiles
GDAL 2.x Compatible	Yes	3,369 of 3,369 Tiles
Geoid	Geoid12B	3,369 of 3,369 Tiles
Matches OGC Template	Yes	3,369 of 3,369 Tiles

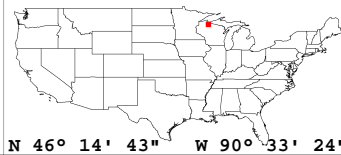
✓ Raster		
File Type:	TIF	3,369 of 3,369
Bands:	1	3,369 of 3,369
Grid Size (pixels):	1250 x 1250	3,369 of 3,369
Pixel Resolution:	2.00000000' x 2.00000000'	3,369 of 3,369
Pixel Type:	32-bit	3,369 of 3,369
Compression:	None	3,369 of 3,369
No Data Value:	-9999	3,369 of 3,369



846.57 sf

1372.55 sf

1898.53 sf

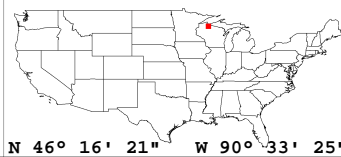


✓ General		
Folder:	E:\Work Package ID 183663\Iron Work Unit ID (209903)\metadata\spatial_metadata\height_separation_rasters	
Total # of Files:	3,369	(All Valid)
Total File Size:	15.4 GB	(16,565,895,195 bytes)

✓ Tile Sizes		
Median Tile Size:	2,500' x 2,500'	
Minimum Tile Size:	2,500' x 2,500'	
Maximum Tile Size:	2,500' x 2,500'	
X Range:	647500.00' to 812500.00'	
Y Range:	195000.00' to 412500.00'	

✓ Spatial Reference System		
Horizontal Projection	NAD83(2011) / WISCRS Iron (ftUS)	3,369 of 3,369 Tiles
Horizontal Datum	NAD83 (National Spatial Reference System 2011)	3,369 of 3,369 Tiles
Horizontal Units	US survey foot	3,369 of 3,369 Tiles
Vertical Datum	NAVD88 height (ftUS) - Geoid12B (ftUS)	3,369 of 3,369 Tiles
Vertical Units	US survey foot	3,369 of 3,369 Tiles
Geoid	Geoid12B	3,369 of 3,369 Tiles

✓ Raster		
File Type:	TIF	3,369 of 3,369
Bands:	3	3,369 of 3,369
Grid Size (pixels):	1250 x 1250	3,369 of 3,369
Pixel Resolution:	2.00000000' x 2.00000000'	3,369 of 3,369
Pixel Type:	8-bit (RGB)	3,369 of 3,369
Compression:	NONE	3,369 of 3,369
No Data Value:	0	3,369 of 3,369



✓ General		
Folder:	E:\Work Package ID 183663\Iron Work Unit ID (209903)\other\Intensity	
Total # of Files:	3,369	(All Valid)
Total File Size:	5.1 GB	(5,526,376,209 bytes)

✓ Tile Sizes	
Median Tile Size:	2,500' x 2,500'
Minimum Tile Size:	2,500' x 2,500'
Maximum Tile Size:	2,500' x 2,500'
X Range:	647500.00' to 812500.00'
Y Range:	195000.00' to 412500.00'

✓ Spatial Reference System		
Horizontal Projection	NAD83(2011) / WISCRS Iron (ftUS)	3,369 of 3,369 Tiles
Horizontal Datum	NAD83 (National Spatial Reference System 2011)	3,369 of 3,369 Tiles
Horizontal Units	US survey foot	3,369 of 3,369 Tiles
Vertical Datum	NAVD88 height (ftUS) - Geoid12B (ftUS)	3,369 of 3,369 Tiles
Vertical Units	US survey foot	3,369 of 3,369 Tiles
Geoid	Geoid12B	3,369 of 3,369 Tiles

✓ Raster		
File Type:	TIF	3,369 of 3,369
Bands:	1	3,369 of 3,369
Grid Size (pixels):	1250 x 1250	3,369 of 3,369
Pixel Resolution:	2.00000000' x 2.00000000'	3,369 of 3,369
Pixel Type:	8-bit Unsigned Integer (MINISBLACK)	3,369 of 3,369
Compression:	NONE	3,369 of 3,369
No Data Value:	0	3,369 of 3,369

