

Door County, Wisconsin: LIDAR Quality Control

The LIDAR data over Door County, Wisconsin was collected by EarthData Aviation between April 17th and April 19th, 2002. EarthData Aviation reviewed the data for coverage and gross anomalies. It appears that nearly the entire project area was covered without gaps (see figure 1). However, one gap that is approximately 900 meters by 900 meters was identified near the southeast corner of the project in flight line eighteen (see figure 2). All of the data seemed to process correctly through the LITES processor. Although most data around the water appears clean, there was some minor corn rowing. Therefore, the use of the water filter may be necessary on some lines. No gross anomalies were identified in the data based on analysis of hillshade images and contours of random flightlines.

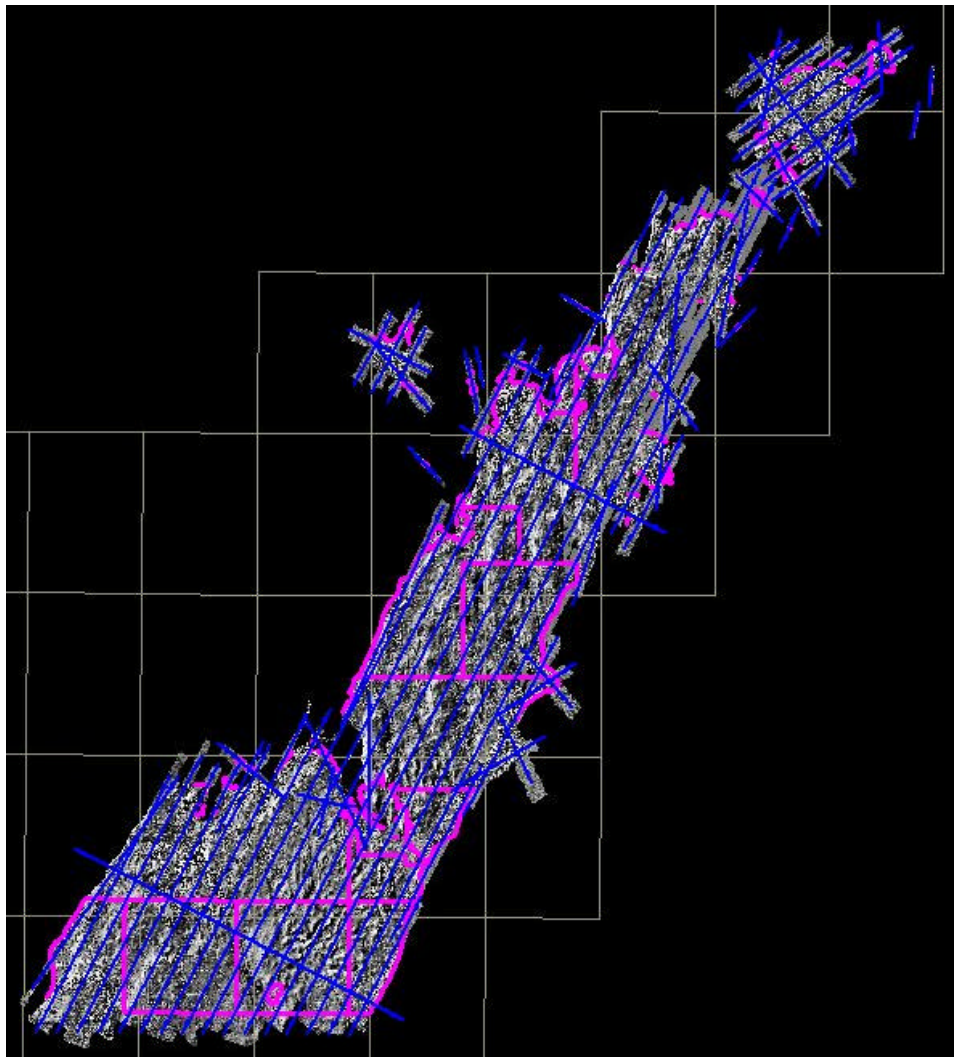


Figure 1: Door County, Wisconsin LIDAR Scan Coverage

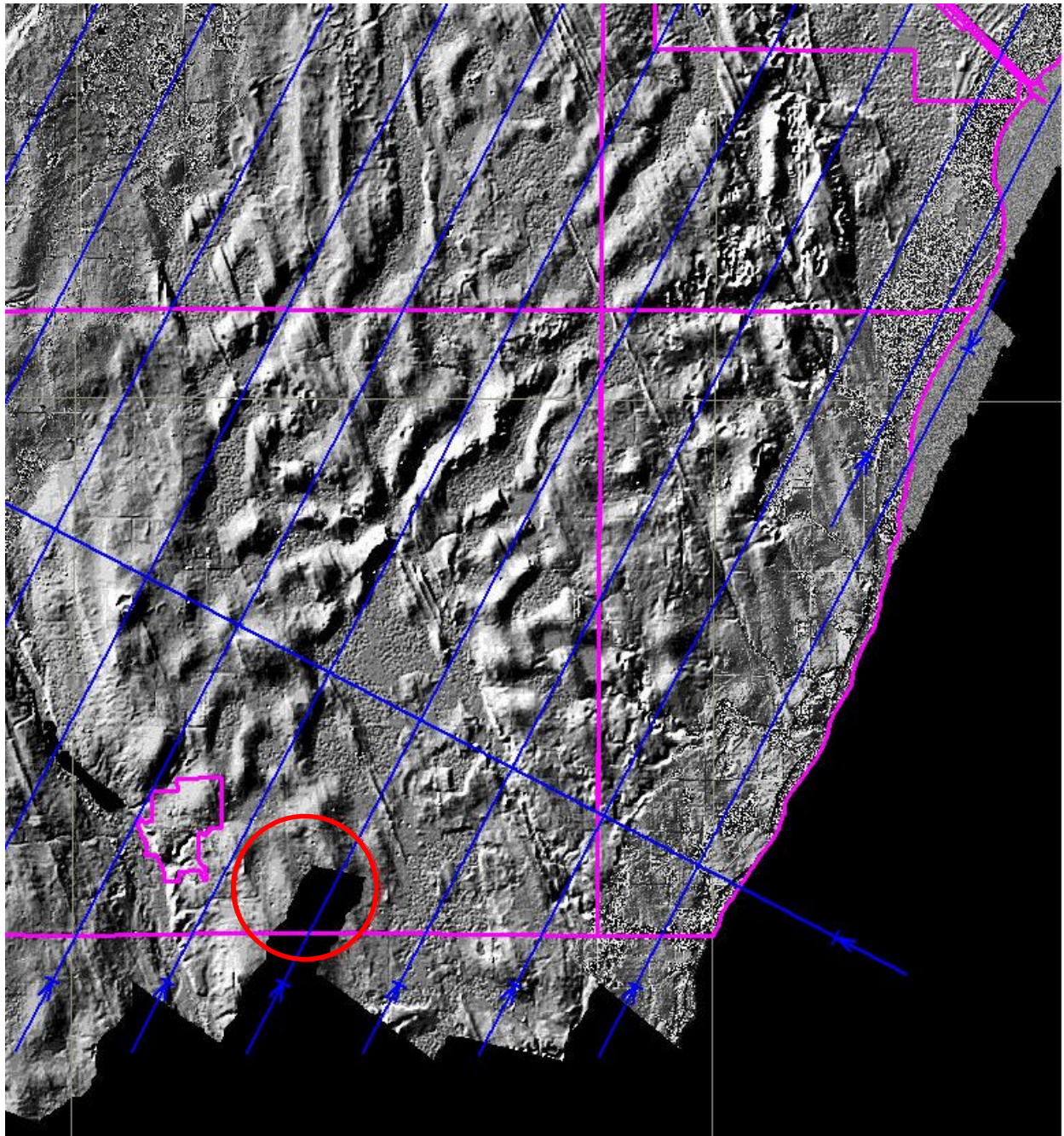


Figure 2: Data Gap in Flight Line Eighteen