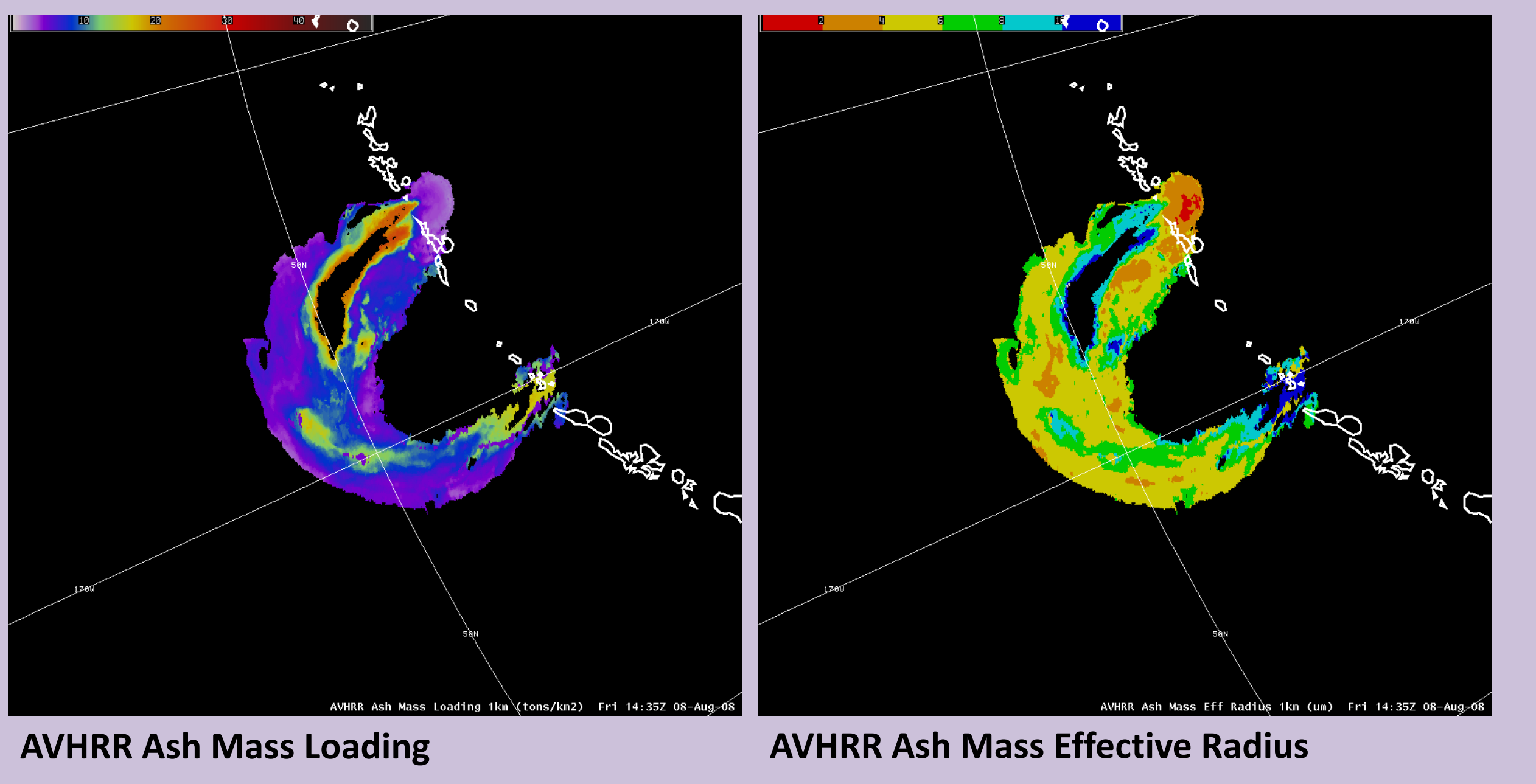
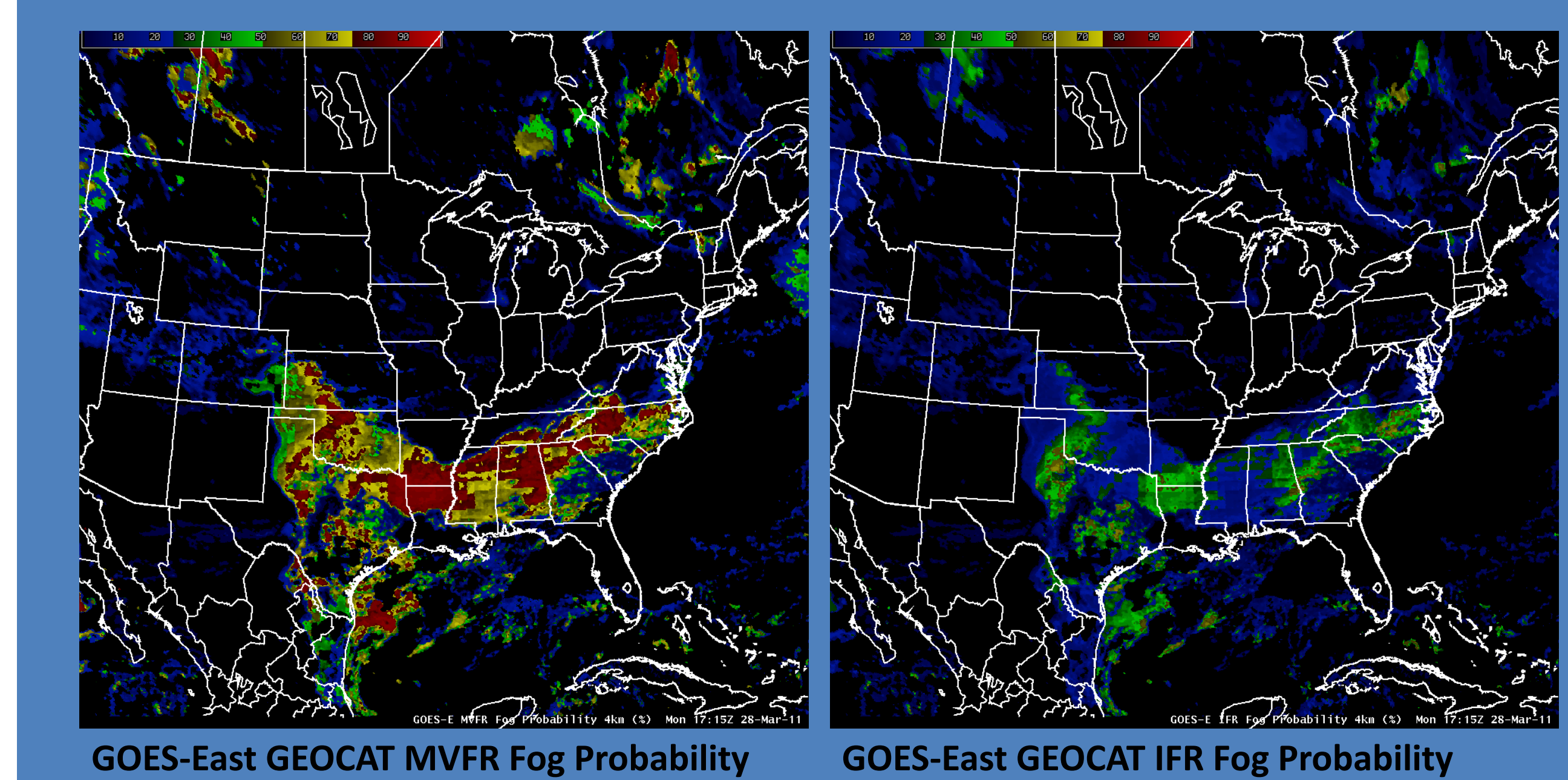
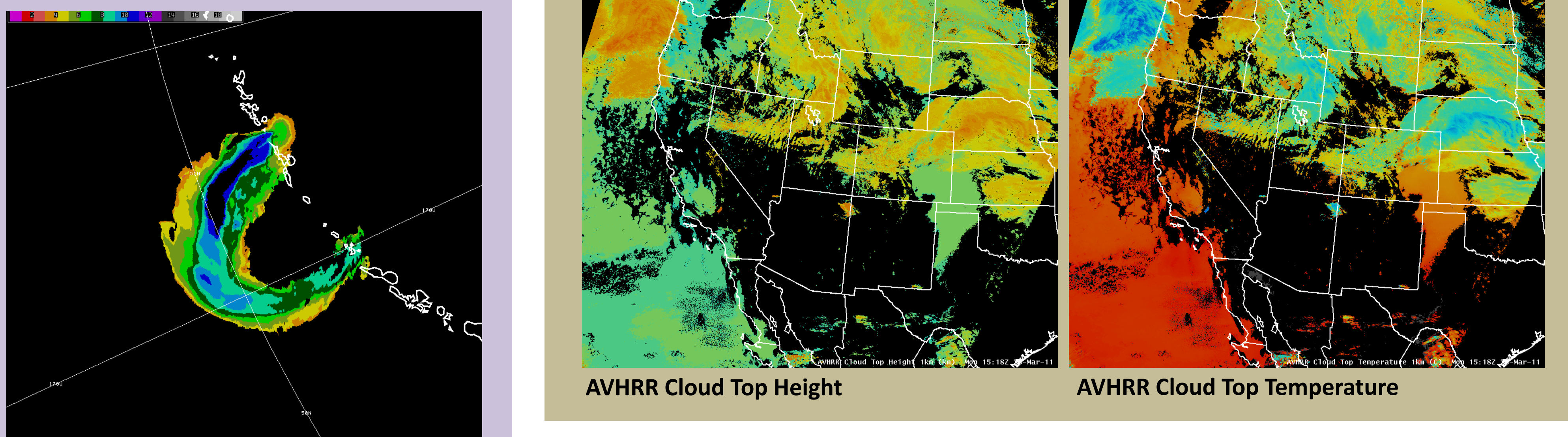
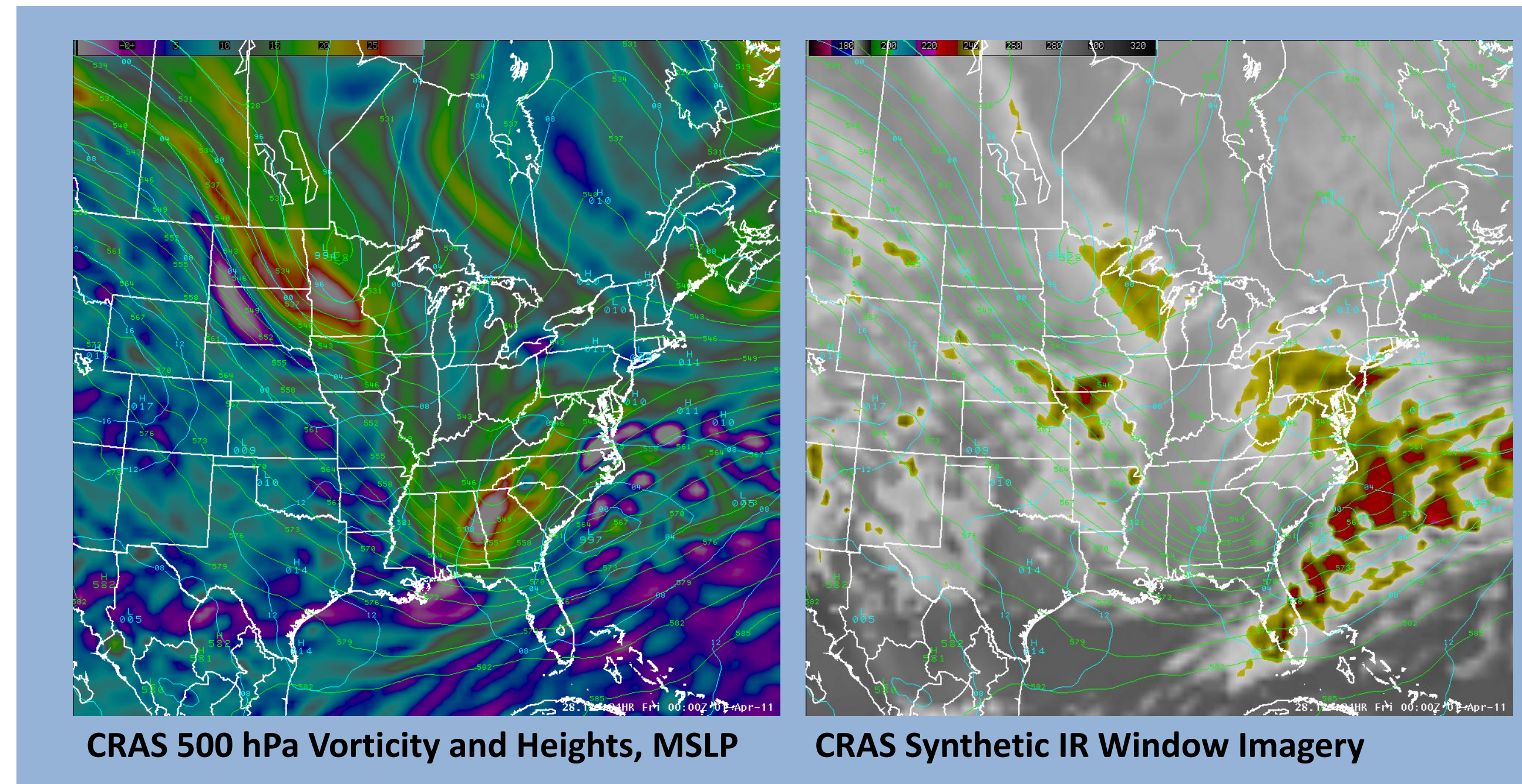
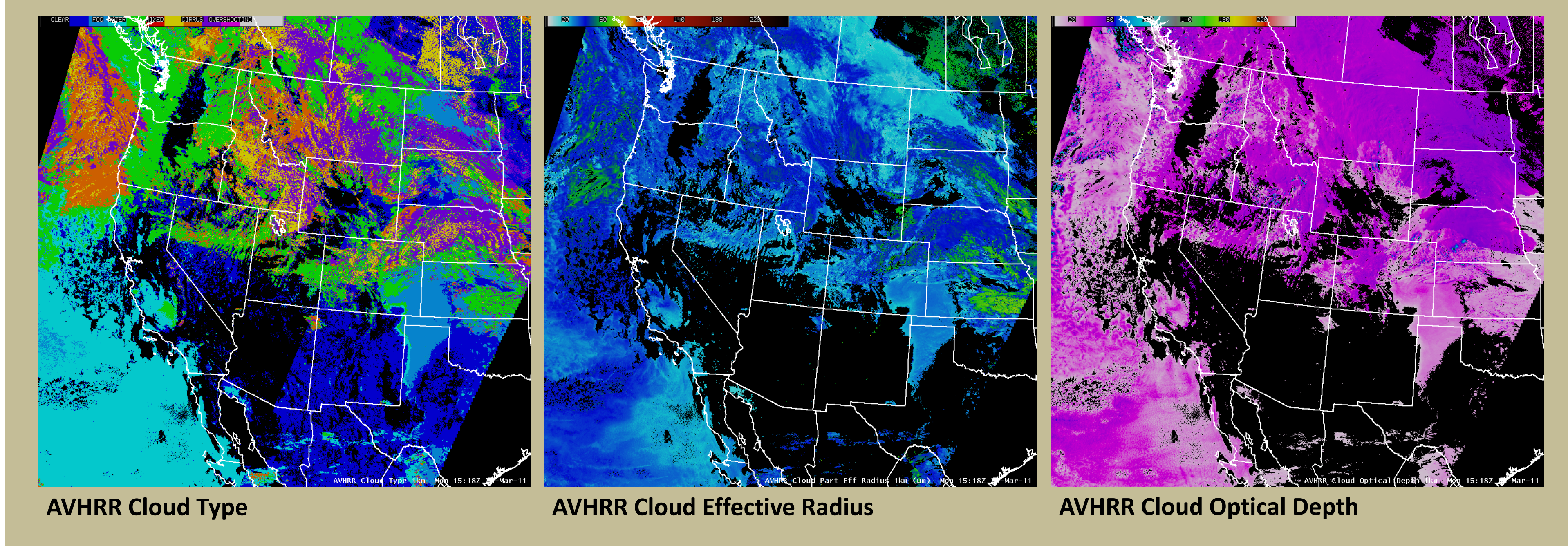
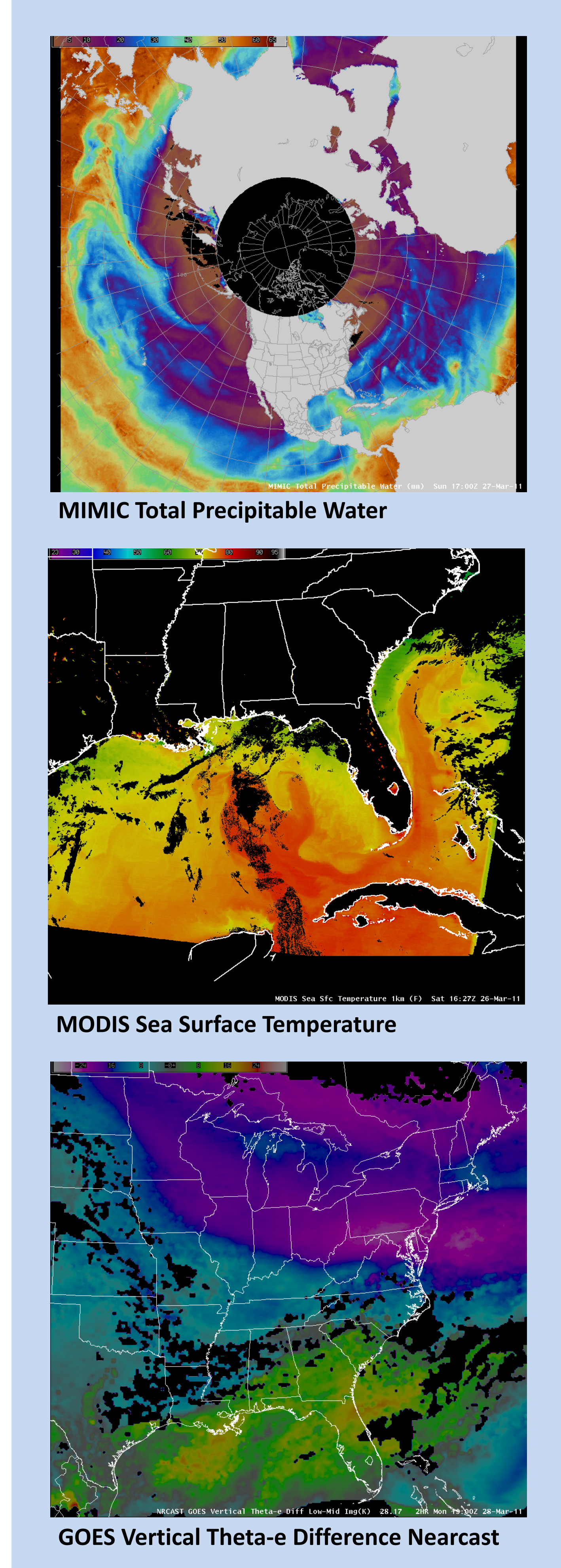
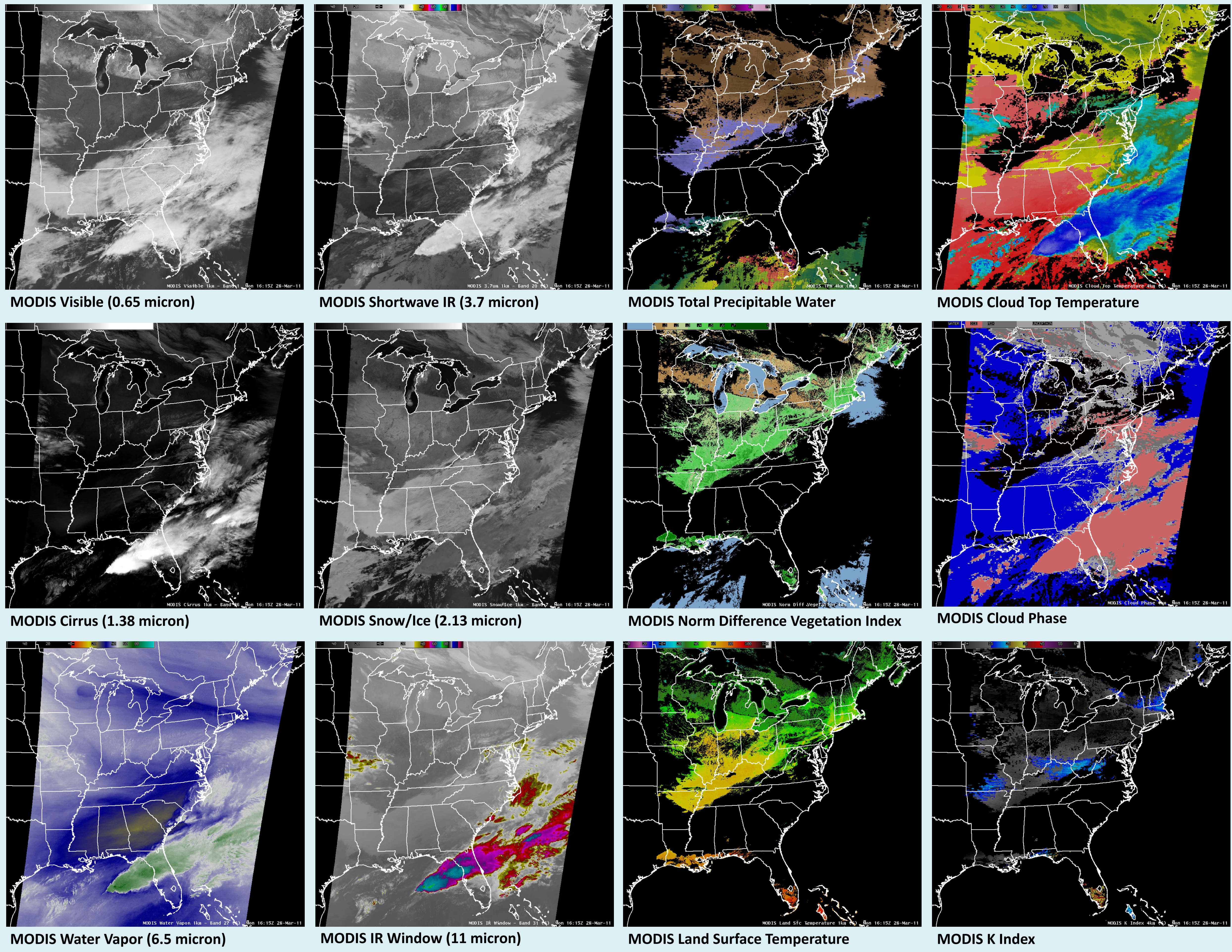
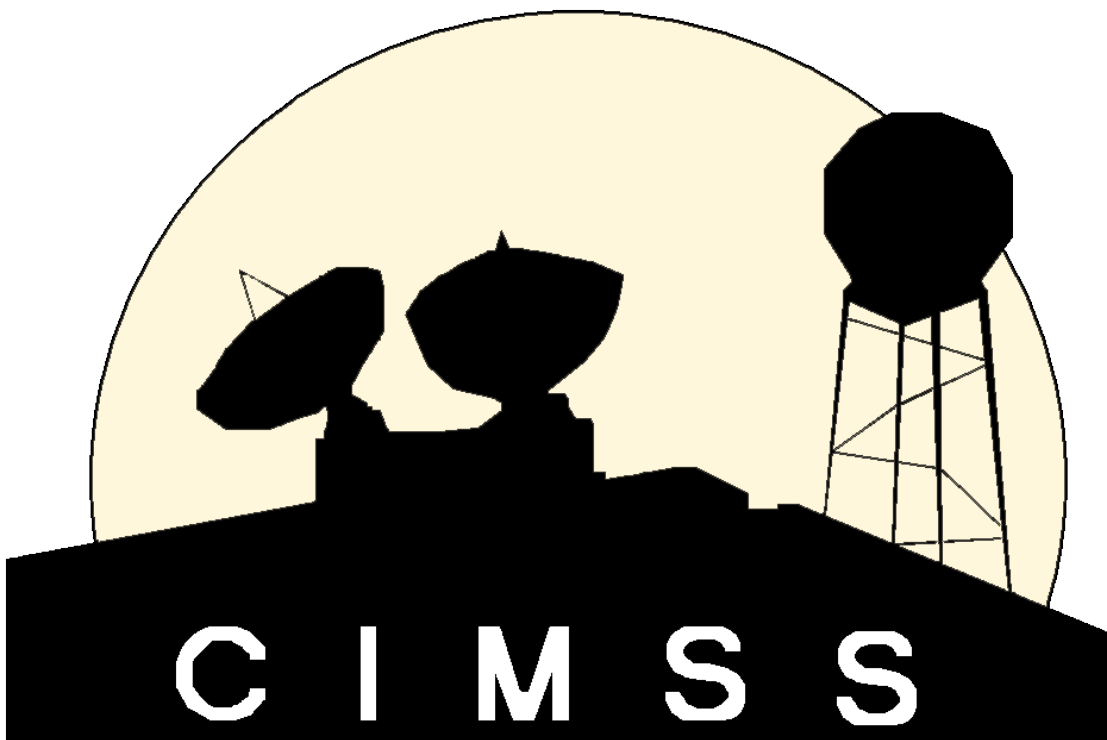


CIMSS' Role in the GOES-R Proving Ground

Jordan Gerth, Wayne Feltz, and Scott Bachmeier, Cooperative Institute for Meteorological Satellite Studies*, Madison, Wisconsin



CIMSS demonstrates GOES-R capabilities and algorithms to over 50 National Weather Service field offices, integrating experimental satellite products into AWIPS, GFE, IC4D, AWIPS II, and N-AWIPS.



The CIMSS/ASPB Proving Ground Team: Jordan Gerth, Wayne Feltz, Scott Bachmeier, Scott Lindstrom, Gary S. Wade, Michael Pavolonis, Andrew Heidinger, Robert Aune, Justin Sieglaff, Lee Cronce, Kaba Bah, Kathy Strabala, Russell Dengel, William Straka

