

McIDAS-V Tutorial

Using HYDRA to Interrogate Hyperspectral Data updated October 2010 (software version 1.0)

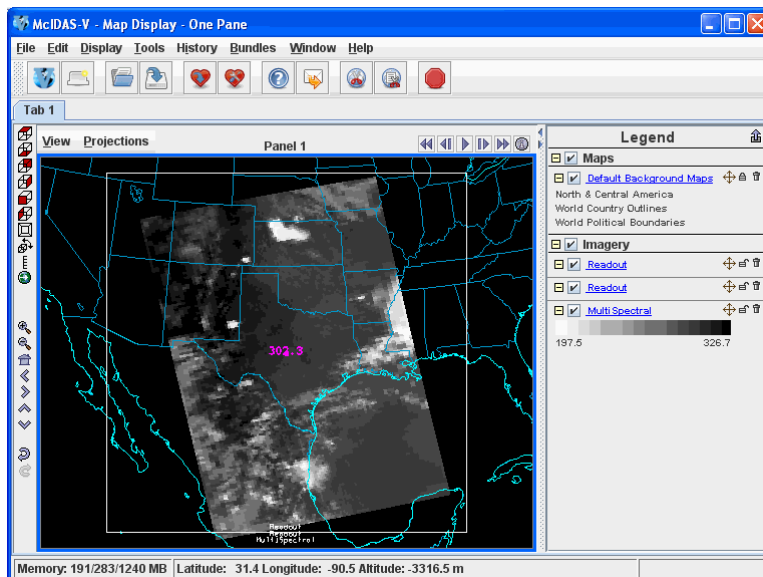
McIDAS-V is a free, open source, visualization and data analysis software package that is the next generation in SSEC's 35-year history of sophisticated McIDAS software packages. McIDAS-V displays weather satellite (including hyperspectral) and other geophysical data in 2- and 3-dimensions. McIDAS-V can also analyze and manipulate the data with its powerful mathematical functions. McIDAS-V is built on SSEC's VisAD and Unidata's IDV libraries, and contains "Bridge" software that enables McIDAS-X users to run their commands and tasks in the McIDAS-V environment. The functionality of SSEC's HYDRA software package is also being integrated into McIDAS-V for viewing and analyzing hyperspectral satellite data.

More training materials are available on the McIDAS-V webpage and in the Getting Started chapter of the McIDAS-V User's Guide, which is available from the Help menu within McIDAS-V. You will be notified at the startup of McIDAS-V when new versions are available on the McIDAS-V webpage - <http://www.ssec.wisc.edu/mcidas/software/v/> . If you encounter any errors, please send them to the McIDAS Help Desk at mug@ssec.wisc.edu .

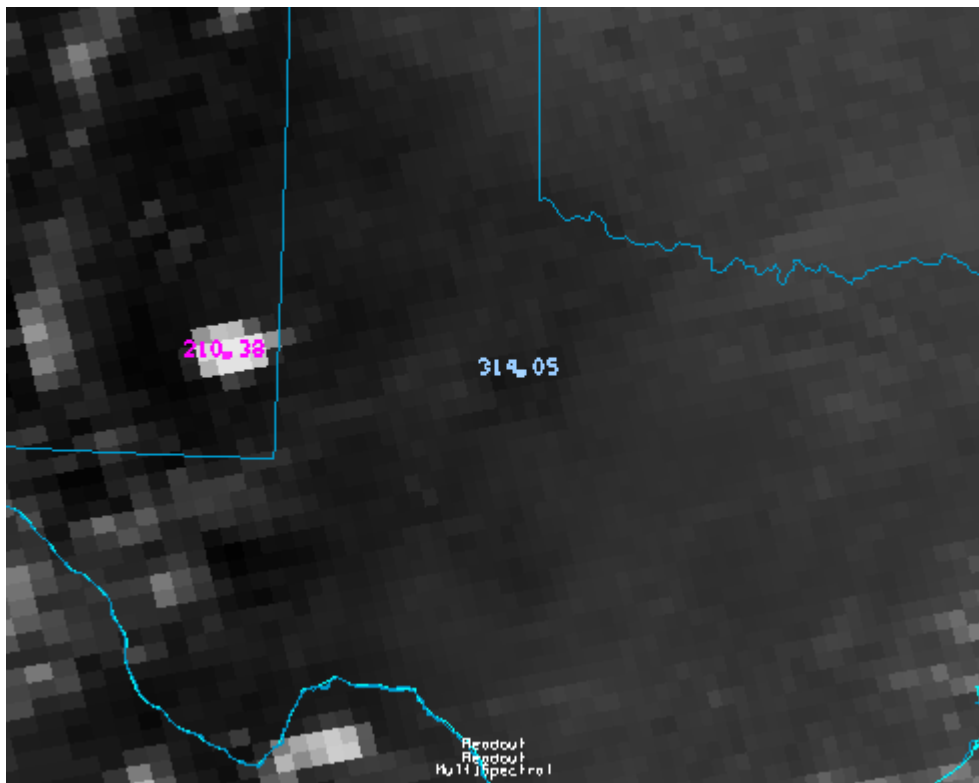
This tutorial assumes that you have McIDAS-V installed on your machine, and that you know how to start McIDAS-V. If you can not start McIDAS-V on your machine, you should follow the instructions in the document entitled *McIDAS-V Tutorial – Installation and Introduction*.

Create a MultiSpectral Display of an AIRS spectra

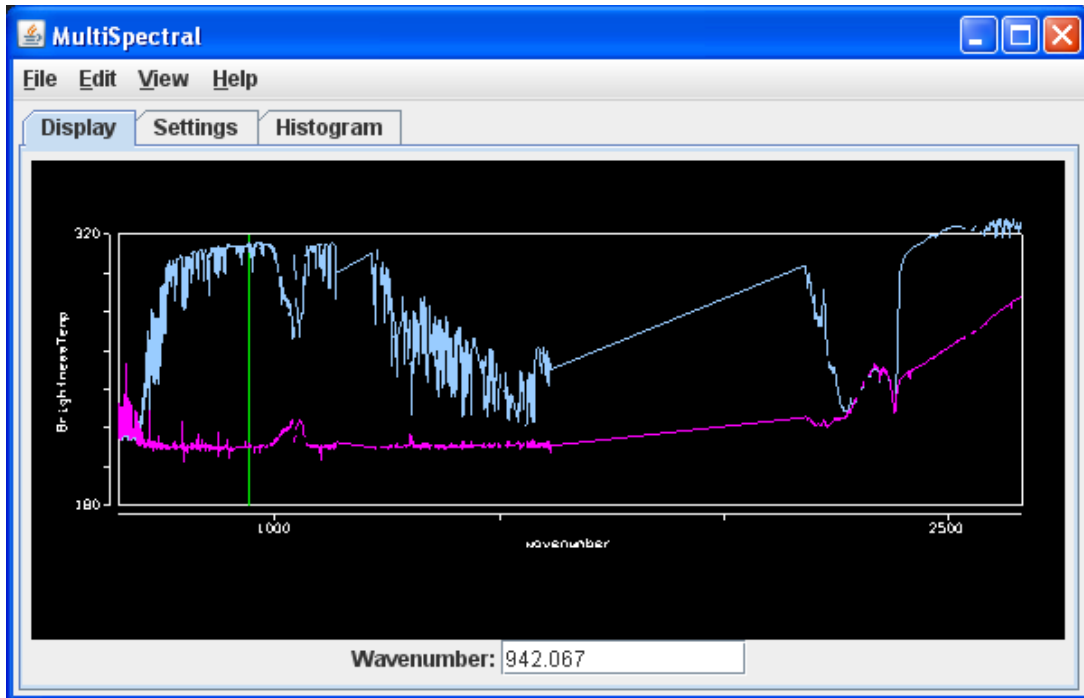
1. Remove all layers and data sources by selecting **Edit ->Remove ->All Layers and Data Sources** from the main menu.
2. Copy the **AIRS.2007.06.19.198.L1B.AIRS_Rad.v5.0.0.0.G07171192741.hdf** (60 MB) file to your local computer. This is an AIRS file from 19:47 UTC on June 19, 2007.
3. Load the file into McIDAS-V via the **HYDRA** chooser by selecting **Satellite->HYDRA** from the **Data Sources** list in the left panel of the **Data Explorer** window.
 - a. Navigate to where the file is located and click **Add Source**.
 - b. When the file is loaded, the **Field Selector** tab will activate. Select **MultiSpectral Display** from the **Displays** list and click **Create Display**.
4. The MultiSpectral Display will be displayed in the main window.



5. Click on *Multi Spectral* in the **Legend** to view the spectra for the AIRS file. There are four aspects to the multispectral display.
 - a. The first is the image in the **Main Display** window.
 - b. The second aspect is the Spectra. The Spectra are displayed in the **Display** tab in the **Layer Controls** under the "MultiSpectral" Layer. The image displayed upon default is the 919.50 cm^{-1} spectral region ($10.8\text{ }\mu\text{m}$).
 - c. The final two aspects are the two spectrum probes. **In the Main Display**, there are two colored square boxes that represent the main probe (magenta) and the reference probe (light blue). The two squares may be overlapping, with only the magenta square visible. *Left click+drag* either box to view the spectra measured in various pixels around the image.
6. Use the *Shift+Left Click+Drag* combination to zoom in on the satellite image as shown below.
7. To compare the difference in spectra of clear vs. cloudy pixels, move the two probes to the approximate locations in the image below so that one is over a thunderstorm cloud top and one is over a dark cloud-free pixel.

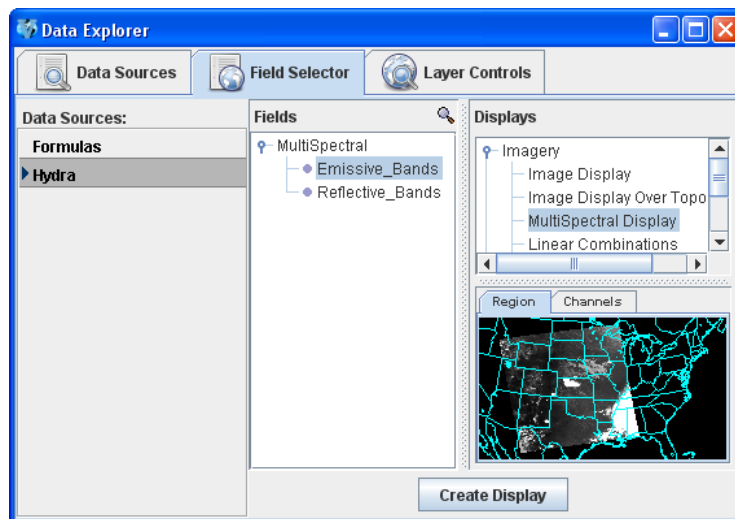


8. Once the two probes are in the approximate locations, the MultiSpectral window should look similar to the spectra below.
 - a. To zoom in on portions of the spectra, use the *Control+Left Click+Drag* combination to define the region of the spectra. To return to the full spectra, use *Shift+Left Click*.

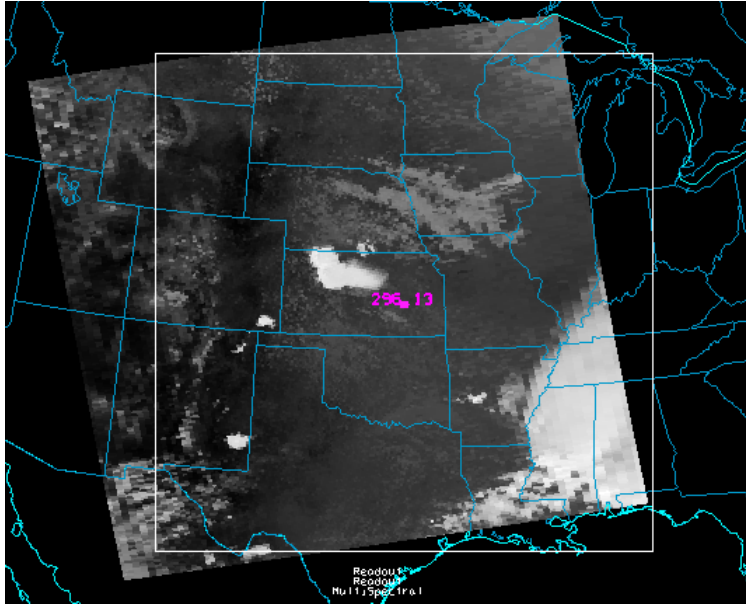


Create a MultiSpectral Display of a MODIS band in McIDAS-V

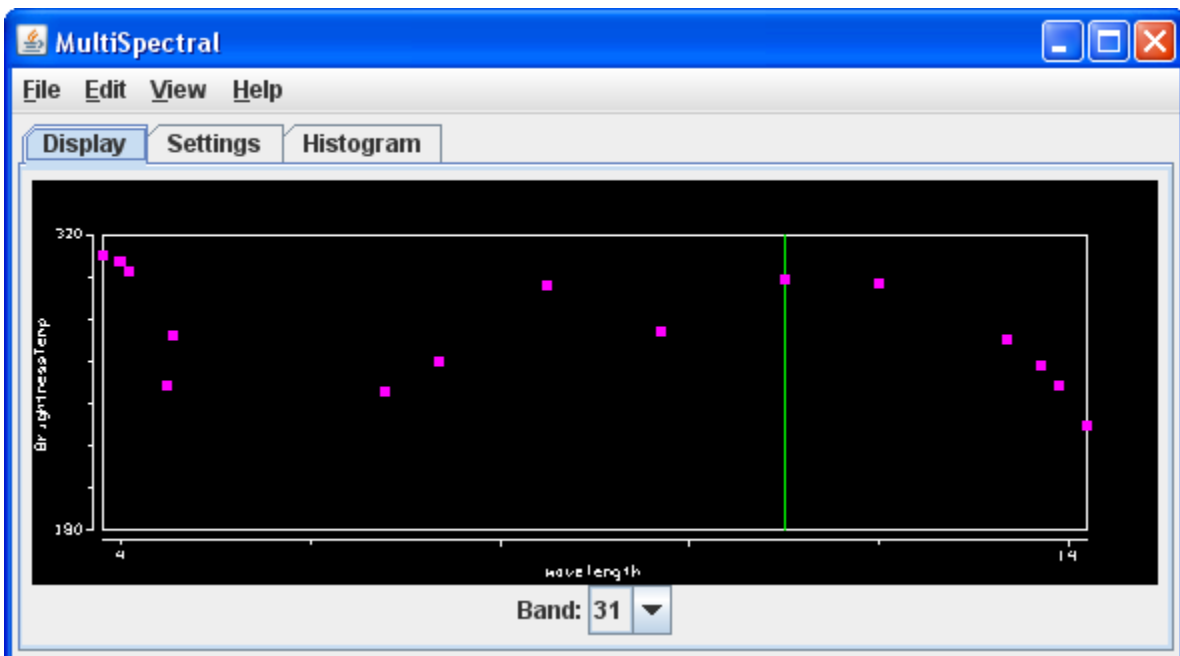
1. Copy the **MYD021KM.A2007170.1950.005.2007171205817.hdf** (155 MB) file to your local computer.
2. Remove all layers and data sources by selecting *Edit ->Remove ->All Layers and Data Sources* from the main menu.
3. Load the new file using the same procedure as before, and create a *MultiSpectral Display* of the *Emissive_Bands*.



4. An 11.0 μm image over the Central United States will be displayed from 1950 UTC on June 19, 2007.

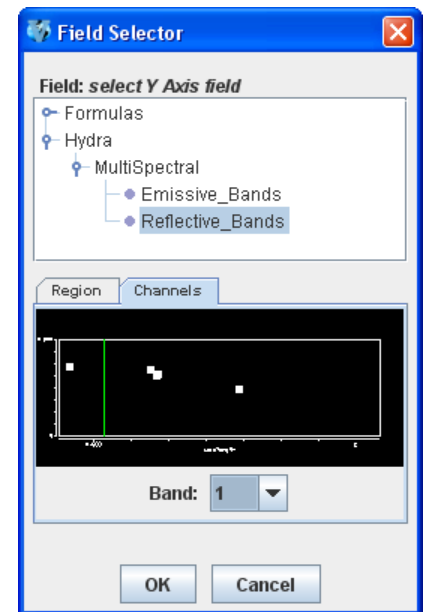
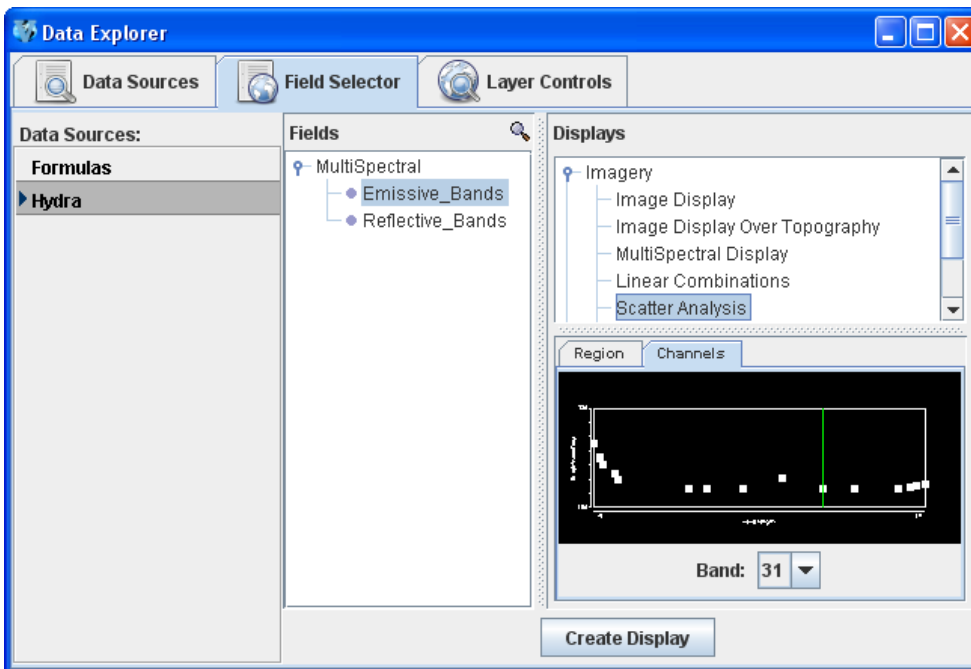


5. To view the spectra, go to the **McIDAS-V Main Display** window and click on “MultiSpectral” in the **Legend**. Use the *Left Click+Drag* option to move the green selector bar or use the Band: drop-down list at the bottom of the spectra to switch the band displayed in the **Main Display**.

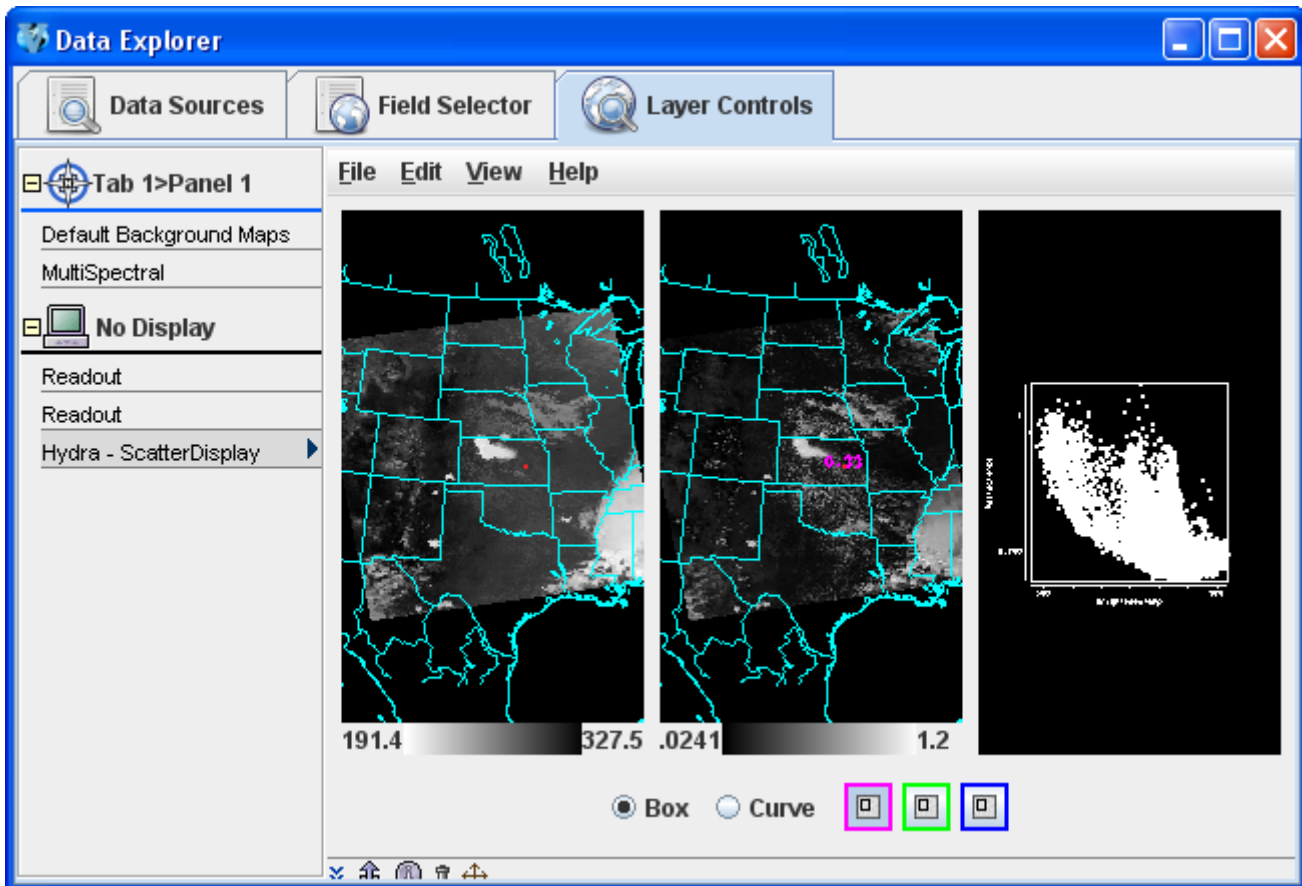


Create a Scatter Analysis of two bands

1. To make a scatter analysis (plot) of two bands, go to the *Data Explorer* window and click on the *Field Selector* tab. If you don't see the *Data Explorer*, go to the *McIDAS-V Main Display* menu and select *Window -> Show Data Explorer*. In the *Field Selector* tab,
 - a. Select the *Emissive_Bands* field. This will be the x-axis in your scatter analysis.
 - b. Select *Scatter Analysis* for display type in the **Displays** list.
 - c. In the lower-right panel, select the **Channels** tab, and select *band 31 (11.0 μ m)*.
 - d. Click **Create Display**.
2. A second *Field Selector* will pop up where you can select a field for the second data source to represent the y-axis. In this new *Field Selector*,
 - a. Select *Reflective_Bands* as the second field to use for scatter analysis.
 - b. Click the **Channels** tab and *select band 1 (0.65 μ m)*.
 - c. Click **OK**.



3. You should see plots similar to those shown below in the *Layer Controls* tab. The plot on the left represents the first field selected, the plot in the middle represents the second field, and the plot on the right is the scatter analysis of the two fields. The first field selected is represented on the x-axis (abscissa) and the second field selected represents the y-axis (ordinate). In this example, it is band 31 (11 μm) versus band 1 (0.65 μm).



4. The scatter plot and images can be analyzed by highlighting a box or region in either display.
- To draw a box, click the “Box” radio button, select one of the three colors to use, and use the *Shift+Left click and drag* option to draw a box over a region of the scatter plot. The corresponding points in the image will be highlighted.
 - Conversely, one can select a region of interest in one of the images and then the corresponding points in the scatter plot will be highlighted.
 - To select your own shape, click the “Curve” radio button and use the *Left Click and drag* option to draw an enclosed shape. Band differences (not shown) can be constructed as a formula and used as one or both of the axes for a scatter plot.

Problem Sets

The previous examples were intended to give you a general knowledge of how to load and display multi and hyperspectral data. The problem sets below are intended to introduce you to new topics related to the data, as well as challenge your knowledge of McIDAS-V. We recommend that you attempt to complete each problem set before looking at the solutions, which are provided below the problem set.

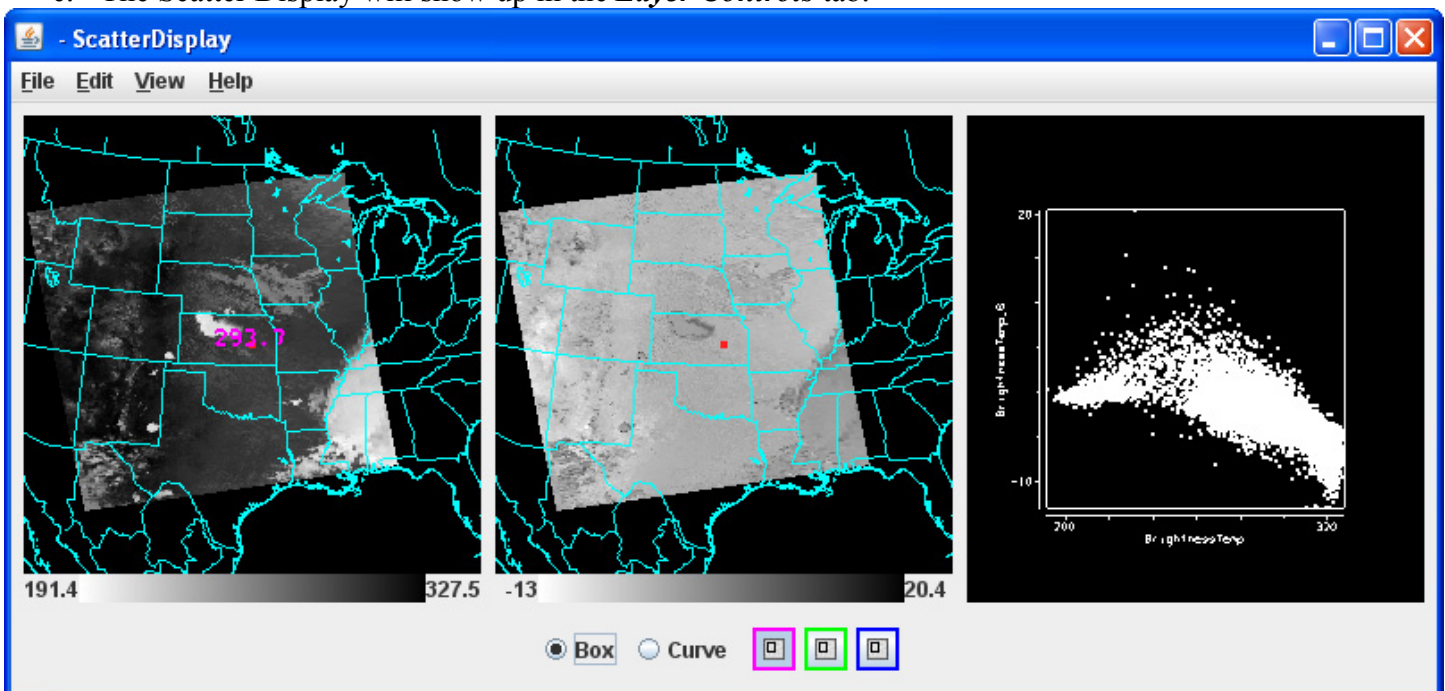
1. Create a Normalized Difference Vegetation Index (NDVI) where $NDVI = [Band\ 2\ (0.86\mu m) - Band\ 1\ (0.65\ \mu m)]/[Band\ 2\ (0.86\ \mu m) + Band\ 1\ (0.65\ \mu m)]$ using the MODIS file.
2. Scatter the Band 31 vs (Band 29 – Band 31). Make channel 31 the x-axis. Then, scatter Band 31 vs. (Band 32 – Band 31). Compare the two.
3. Make an online-offline difference of AIRS data.

Problem Set #1 - Solution

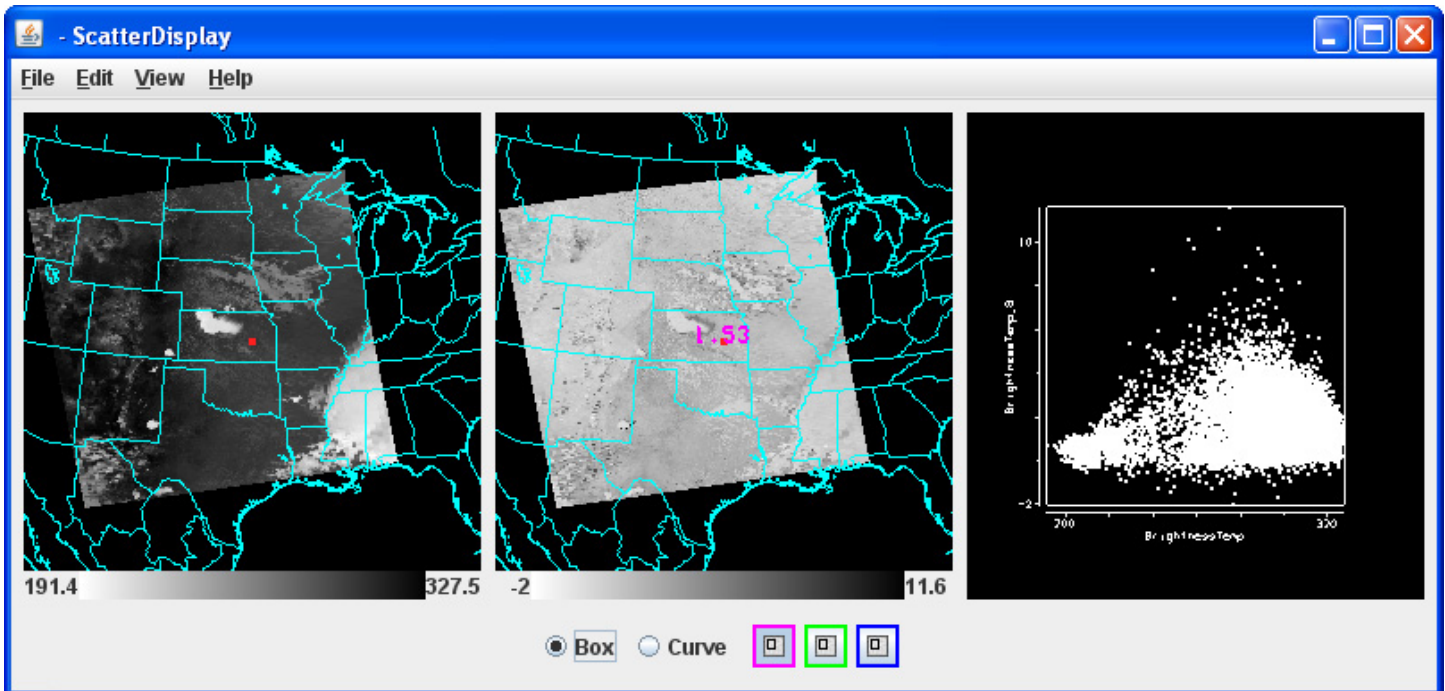
1. Remove all Layers.
2. In the **Field Selector**, select *Reflective Bands* in the **Fields** tab and select “4 Channel Combinations” from the **Displays** list and click **Create Display**.
3. Set up the NDVI equation.
 - a. Select Band 2 in the red drop down menu. Note the red selector moves to 0.86 μ m.
 - b. To the right of the red drop down menu, select the minus operator from the drop-down list.
 - c. Select Band 1 in the green drop down menu.
 - d. To the right of the green drop down menu, select the divide operator from the drop-down list.
 - e. Select Band 2 in the blue drop down menu.
 - f. To the right of the blue drop down menu, select the plus operator from the drop-down list.
 - g. Select Band 1 in the magenta channel box.
 - h. Click **Compute New Field** to create a new field of the NDVI.
4. The resulting field will be “(((1.0*a) – (1.0*b))/((1.0*c) + (1.0*d)))” in the **Field Selector** under the “MultiSpectral” field in the **Fields** list.
 - a. Click on this new field and select *Image Display* from the **Displays** tab.
 - b. Click **Create Display**. To add an NDVI enhancement, go to the **Layer Controls**. Click next to **Color Table**: Choose *Satellite -> GOES -> NDVI*.

Problem Set #2 – Solution

1. Remove all layers.
2. In the **Field Selector**, select *Emissive Bands* in the **Fields** tab, select “4 Channel Combinations” from the **Displays** list and click **Create Display**.
3. Create the “Band 29 – Band 31” difference image.
 - a. Select Band 29 in the red channel box.
 - b. To the right of the red drop down menu, select the minus operator from the drop-down list.
 - c. Select Band 31 in the green channel box.
 - d. Click **Compute New Field**.
4. Using the same process, create the “Band 31 – Band 32” difference image.
5. Return to the **Field Selector** to create the Scatter Analysis.
 - a. Select *Emissive Bands* in the **Fields** tab, select “Scatter Analysis” from the **Displays** list and click **Create Display**. The default emissive band is band 31. This will be the x-axis.
 - b. For the y-axis, select the “Band 29 – Band 31” difference image. This will be the first “((1.0*a) – (1.0*b))” image underneath *MultiSpectral* in the **Fields** tab in the **Field Selector**. Select the field and click **OK**.
 - c. The Scatter Display will show up in the **Layer Controls** tab.



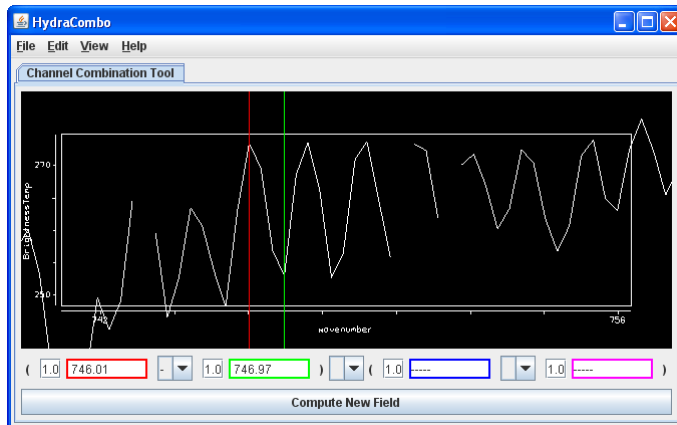
- Repeat these steps to create a scatter analysis display using band 31 as the x-axis and “Band 31 – Band 32” as the y-axis.



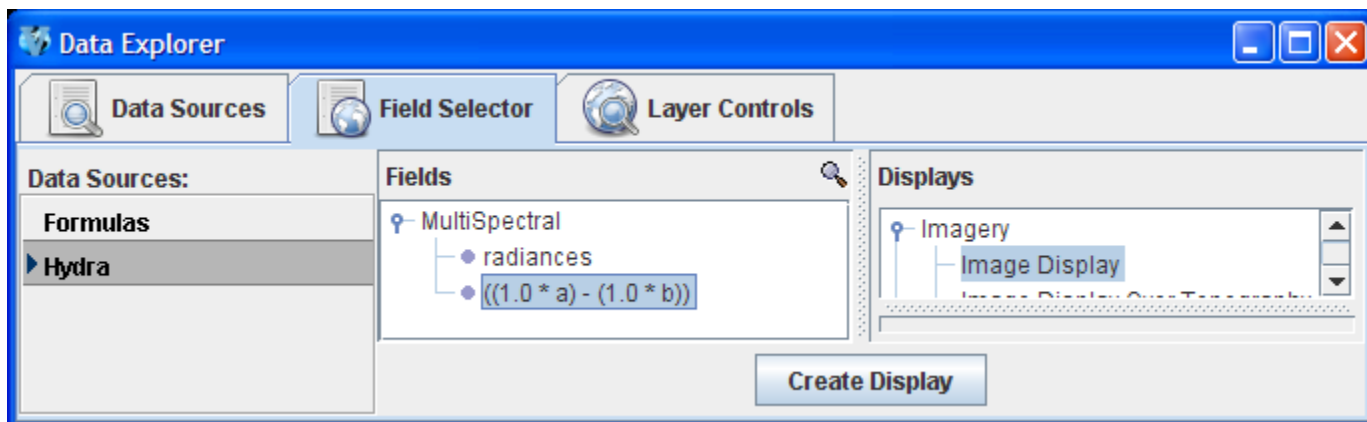
- Undock each scatter display by selecting *View->Undock from Data Explorer* from the *Layer Controls* menu.
- Arrange the scatter displays side by side and use the scatter analysis tools to draw boxes and curves on the images and scatter plot. Compare both scatter displays.

Problem Set #3 - Solution

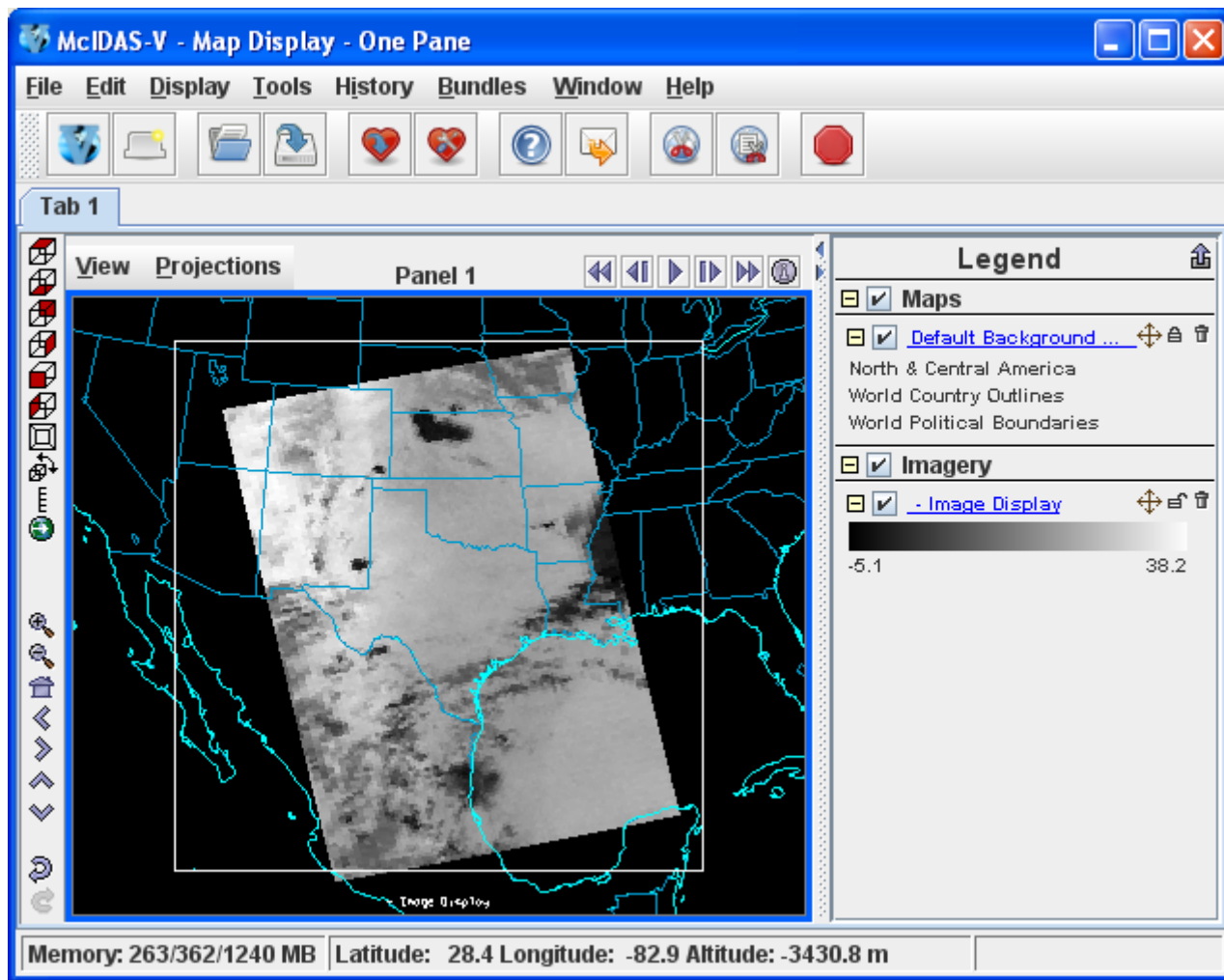
1. Remove all layers and data sources, and load the AIRS data file.
2. Return to the *Field Selector* and select “4 Channel Combinations” from the **Displays** list and click **Create Display**.
3. Enter in the equation 746.01 (red) – 746.97 (green) and hit Enter. The vertical red and green lines in the spectrum will move to 746.01 cm^{-1} and 746.97 cm^{-1} , respectively.
4. Zoom in over the region by using the *Control+Left Click+Drag* option.



5. Click **Compute New Field** to create a new field of this online-offline difference.
6. The resulting field will be “ $((1.0*a) - (1.0*b))$ ” in the *Field Selector* under the "MultiSpectral" field in the **Fields** list. Click on this new field and select *Image Display* from the **Displays** and click **Create Display**.



The resulting image from the online-offline calculation shows the vertical temperature gradient – in cloudy regions (darker), the difference is small because both the online and offline wave numbers detect clouds. In clear regions (lighter), the difference between the two wave numbers is larger, because of the temperature gradient through the atmosphere.



Short Summary of Hydra Controls in McIDAS-V

Spectra

Select spectra - write wavenumber in box, select channel from pulldown menu, or middle button click

Control+Left click+Drag – Select portion of spectra to zoom in on

Shift+Left click – Return to full spectrum

Right Click + Drag – Move spectrum right or left

Middle mouse button (or wheel) click – Read Brightness Temperatures and Wavenumbers. This will provide the value of the Brightness Temperature and Wavenumber at the point on the graph you are clicking. It will also move the green line and change the image to that wavenumber.

Image

Left Click on a probe and drag – Change pixel that spectra is displaying

Change band – used spectra window - write wavenumber in box or middle button click

Move image up or down – use left utility bar arrow icons

Zoom – **Shift+Right Click+Roll over** window –or- mouse scroll wheel forward or backward

Return to Original Image View – Click on house icon in the left utility bar